

BIZANTINE

441. **ANASTASIO I** (491 - 518)
FOLLIS
 S. 19 AE GR. 16,67
 M.MB 80
442. **OSTROGOTI** (493 - 553)
VENTI NUMMI (ROMA)
 WR. 19 AE GR. 8,94 **R**
 TONDELLO INCOMPLETO.
 BB 150
443. **VENTI NUMMI** (ROMA)
 WR. 31 AE GR. 6,31
 BB 150
444. **TEODORICO** (423 - 526)
QUARANTA NUMMI
 METC. 76B AE GR. 9,31 **R**
 Q.BB 150
445. **AL NOME DI ANASTASIO I**
PENTANUMMO (RAVENNA)
 RAN. 253/254 AE GR. 2,08 **RRRR**
 PATINA VERDE.
 MB-BB 300
446. **GIUSTINIANO I** (527 - 565)
SOLIDO OFFICINA ⊖
 S. 139 AU GR. 4,38
 BB 250
447. **SOLIDO OFFICINA** △
 S. 140 AU GR. 4,48
 SPL 300
448. **QUARTO DI FOLLIS** (ROMA)
 D. O. 331 AE GR. 7,94 **R**
 INCROSTAZIONI.
 MB 100



449. **DECANUMMO** (ROMA)
S. 308 AE GR. 5,57

BB 50
450. **DECANUMMO** (ROMA)
D. O. 326 AE GR. 4,09
PATINA VERDE E SEDIMENTAZIONI CALCAREE.

Q.BB 100
451. **PENTANUMMO** (ROMA)
S. 309 AE GR. 1,51

Q.SPL 50
452. **PENTANUMMO** (CARTAGINE)
D. O. 300,1 AE GR. 2,50

BB 80
453. **OSTROGOTI CON FELIX RAVENNA** (518 - 540)
DECANUMMO (RAVENNA)
RAN. 267 AE GR. 2,74 **R**
PATINA VERDE.

Q.BB 150
454. **DECANUMMO** (RAVENNA)
RAN. 269 AE GR. 2,18
PATINA VERDE.

MB 100
455. **ATALARICO** (527 - 534)
DECANUMMO (ROMA)
WR. 69/71 AE GR. 2,51
PATINA VERDE CHIARA UNIFORME

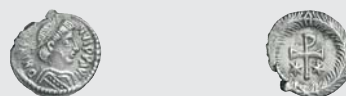
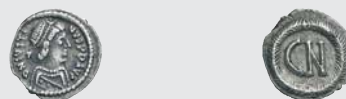
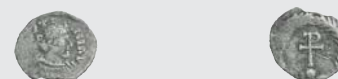
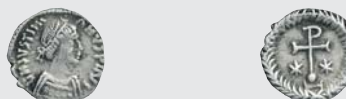
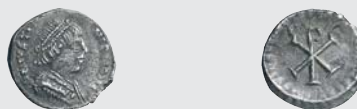
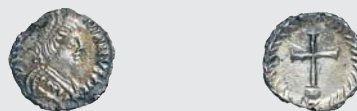
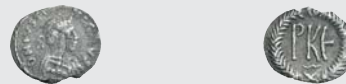
M.BB 150
456. **DECANUMMO** (RAVENNA)
RAN. 284 AE GR. 3,06 **RR**

M.MB 170
457. **PENTANUMMO** (RAVENNA)
RAN. 285 AE GR. 1,46 **RRR**

BB 150

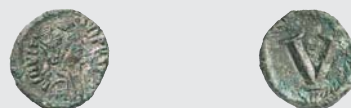


458. **TEODATO AL NOME DI GIUSTINIANO I** (534 - 536)
DECANUMMO (RAVENNA)
 RAN. 290/292 AE GR. 3,27
 BB 150
459. **125 NUMMI** (RAVENNA)
 RAN. 353 VAR. AG GR. 0,53 **R**
 Q.BB 150
460. **MEZZA SILIQUA** (RAVENNA)
 RAN. 358 VAR. AG GR. 0,99 **RRR**
 Q.SPL 300
461. **MEZZA SILIQUA** (RAVENNA)
 RAN. 360 VAR. AG GR. 1,41 **RRR**
 BB-Q.SPL 300
462. **MEZZA SILIQUA** (RAVENNA)
 RAN. 361 VAR. AG GR. 0,74 **R**
 BB 180
463. **QUARTO DI SILIQUA** (RAVENNA)
 RAN. 365 VAR. AG GR. 0,30 **RRR**
 MB-BB 150
464. **DECANUMMO** (RAVENNA)
 RAN. 381 VAR. AE GR. 2,38 **RRR**
 CONSERVAZIONE INSOLITA.
 M.BB 250
465. **GIUSTINO II** (565 - 578)
SOLIDO OFFICINA Z
 S. 345 AU GR. 4,44
 M.BB 250
466. **250 NUMMI** (RAVENNA)
 RAN. 418 AG GR. 0,70
 M.BB 200
467. **MEZZA SILIQUA** (RAVENNA)
 RAN. 428 VAR. AG GR. 0,71 **RR**
 BB-SPL 220



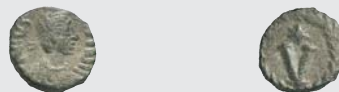
468. **PENTANUMMO** (ROMA)
D. O. 208,1 AE GR. 1,77

BB 100



469. **PENTANUMMO** (ROMA)
S. 405 AE GR. 1,48

BB 40



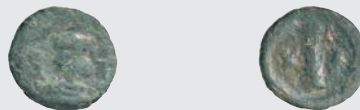
470. **MAURIZIO TIBERIO** (582 - 602)
MEZZO FOLLIS (RAVENNA)
RAN. 492 AE GR. 3,50

MB-BB 150



471. **DECANUMMO** (RAVENNA)
RAN. 496 AE GR. 1,99

MB 100



472. **FOCA** (602 - 610)
SOLIDO OFFICINA I
S. 620 AU GR. 4,48
SCHIACCIATURA MARGINALE.

M.SPL 300



473. **FOLLIS ANNO VI** (RAVENNA)
RAN. 521 AE GR. 5,06

M.MB 150



474. **DECANUMMO** (RAVENNA)
RAN. 526/528 AE GR. 3,34

M.MB 150



475. **ERACLIO ED ERACLIO COSTANTINO**
(613 - 641)

SOLIDO OFFICINA E
S. 734 AU GR. 4,41
BELL' ESEMPLARE CON FONDI LUCENTI.

Q.FDC 400



476. **ERACLIO, ERACLIO COSTANTINO ED ERACLEONE**
(610 - 641)

SOLIDO OFFICINA Γ
S. 761 AU GR. 4,29

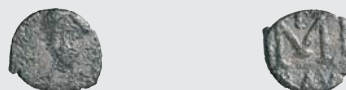
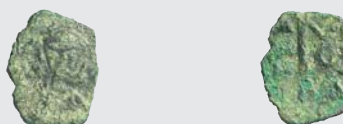
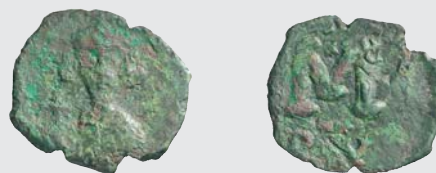
BB 250



477. **TREMISSE**
S. 787 Au GR. 1,44
SOLITE ONDULAZIONI.
- BB 130
478. **EXAGRAMMA**
S. 798 Au GR. 6,36 **R**
SEGNI DI RIBATTITURA.
- Q.BB 120
479. **QUARTO DI SILIQUA** (RAVENNA)
RAN. 587 Ag GR. 0,36 **R**
- BB 180
480. **FOLLIS ANNO XVI** (RAVENNA)
RAN. 604 Ae GR. 4,56 **RR**
MONETA FRAZIONATA.
- Q.SPL 50
481. **FOLLIS ANNO XXI** (RAVENNA)
RAN. 641 Ae GR. 3,70 **RR**
- MB 100
482. **COSTANTE II** (641 - 668)
FOLLIS (RAVENNA)
RAN. 698/705 Ae GR. 2,49 **RR**
- MB 100
483. **MEZZO FOLLIS** (RAVENNA)
RAN. 712/715 Ae GR. 2,05 **RRR**
- B - MB 100
484. **COSTANTINO IV** (668 - 685)
FOLLIS ANNO XVIII (RAVENNA)
RAN. 723 Ae GR. 3,50 **RR**
- MB 100
485. **FOLLIS ANNO XXVI** (RAVENNA)
RAN. 731 Ae GR. 3,79 **RR**
- MB 200



486. **GIUSTINIANO II** (PRIMO REGNO 685 - 695)
FOLLIS (RAVENNA)
 RAN. 753/757 AE GR. 3,49 **RRR**
 MB 150
487. **LEONZIO I** (695 - 698)
FOLLIS (RAVENNA)
 RAN. 765/768 AE GR. 2,33 **RRR**
 M.MB 150
488. **GIUSTINIANO II E TIBERIO**
 (SECONDO REGNO 705 - 711)
FOLLIS (RAVENNA)
 RAN. 788/789 AE GR. 2,59 **RRRR**
 MB 150
489. **LEONE III** (717 - 720)
FOLLIS (RAVENNA)
 RAN. 808/815 AE GR. 0,86 **RRR**
 B-MB 150
490. **LEONE III E COSTANTINO V** (720 - 741)
FOLLIS (RAVENNA)
 RAN. 819 AE GR. 1,22 **RRRR**
 B-MB 100
491. **ASTOLFO** (749 - 756)
FOLLIS (RAVENNA)
 RAN. 847/849 AE GR. 1,40 **RRRR**
 MB-Q.BB 500
492. **ROMANO III** (1028 - 1034)
NOMISMA HISTAMENON
 S. 1819 AU GR. 4,32
 M.BB 320
493. **COSTANTINO IX** (1042 - 1055)
NOMISMA HISTAMENON
 S. 1828 AU GR. 4,37
 BB 280



494. **MICHELE VII** (1071 - 1078)
NOMISMA HISTAMENON
 S. 1868 EL GR. 4,30

Q.BB 230

495. **MANUELE I** (1143 - 1180)
HYPERPYRON
 S. 1956 AU GR. 4,27

BB 280

496. **IMPERO DI NICEA GIOVANNI III** (1222 - 1254)
HYPERPYRON (MAGNESIA)
 S. 2073 TIPO AU GR. 4,20

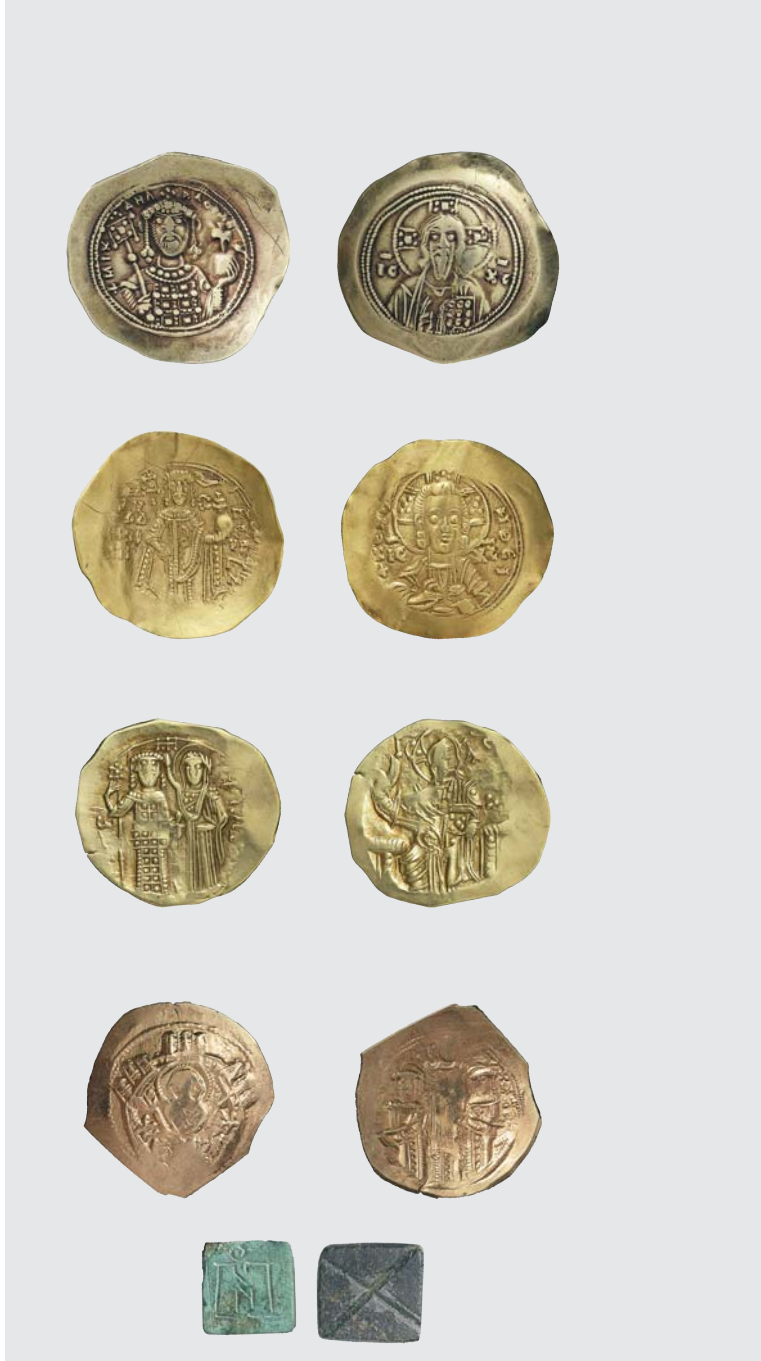
Q.BB 150

497. **MICHELE VIII PALEOLOGO** (1261 - 1282)
NOMISMA HISTAMENON
 S. 2243 AU GR. 4,02

BB 220

498. LOTTO DI 2 PESI MONETARI IN AE GR. 3,83 E GR. 4,23

BB 50



222



239



245



253