

ALITALIA
VOLO INAUGURALE NAPOLI-MILANO PARIGI
15 Aprile 1957



MR. MORILLON
POSTE RESTANTE

PARIS 42

ALITALIA
VOLO INAUGURALE NAPOLI-MILANO PARIGI
15 Aprile 1957



MR. MORILLON
POSTE RESTANTE

PARIS 42

SERVIZIO AEREA
PAR AVION
BY AIR MAIL

BY AIR MAIL
PAR AVION



POSTE ITALIANE L.15



FILIPPINO LIPPI
1857-1957
POSTE ITALIANE



Mr. J. BONNAT
POSTE RESTANTE
TOKYO
Japon

BY AIR MAIL
PAR AVION



POSTE ITALIANE L.15

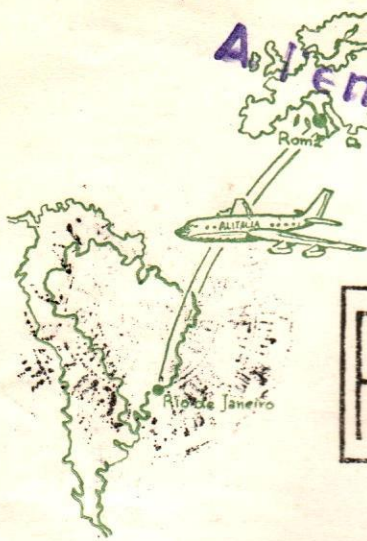


FILIPPINO LIPPI
1857-1957
POSTE ITALIANE



Mr. J. BONNAT
POSTE RESTANTE
TOKYO
Japon
A l'attention de

Amicizia Italo-Brasileana



ROMA CENTRO
R 003996
FILATELICO



Visita del Presidente della Repubblica nel Brasile

"Volo Speciale 3 Settembre 1958.."

CERRUTI FIRMINO

PIAZZA POSTA, 1

RIO DE JANEIRO (Brasile)

Amicizia Italo-Brasileana



ACCOMANDATA
STAMPE

ROMA CENTRO
R 004122
FILATELICO



Visita del Presidente della Repubblica nel Brasile

"Volo Speciale 3 Settembre 1958.."

CERRUTI FIRMINO

PIAZZA POSTA, 1

RIO DE JANEIRO (Brasile)

Amicizia Italo-Brasiliiana



RACCOMANDATA
STAMPE

ROMA CENTRALE
00393
FILATELICO

3939



CERRUTI FIRMINO

PIAZZA POSTALE
RIO DE JANEIRO (Brasile)

Visita del Presidente della Repubblica nel Brasile

"Volo Speciale 3 Settembre 1958"



3° ESPERIMENTO
DI COLLEGAMENTO
AEREO POSTALE
CON ELICOTTERI

50 LIRE POSTA AEREA



TORINO
(Ferrovia)
4222

PER VIA AEREA
PAR AVION
BY AIR MAIL

Sig.
DI STEFANO MARIO
446 W 23 rd Street

NEW YORK

3° ESPERIMENTO
DI COLLEGAMENTO
AEREO POSTALE
CON ELICOTTERI
50 LIRE POSTA AEREA



R TORINO
(Ferrovia)
4178

PER VIA AEREA
PAR AVION
BY AIR MAIL

Sig.
DI STEFANO MARIO
446 W 23 rd Street

NEW YORK

3° ESPERIMENTO
DI COLLEGAMENTO
AEREO POSTALE
CON ELICOTTERI
50 LIRE POSTA AEREA



R TORINO
(Ferrovia)
4519

BY AIRMAIL
PAR AVION

Sig.
DI STEFANO MARIO
446 W 23 rd Street

NEW YORK

3° ESPERIMENTO
DI COLLEGAMENTO
AEREO POSTALE
CON ELICOTTERI
50 LIRE POSTA AEREA

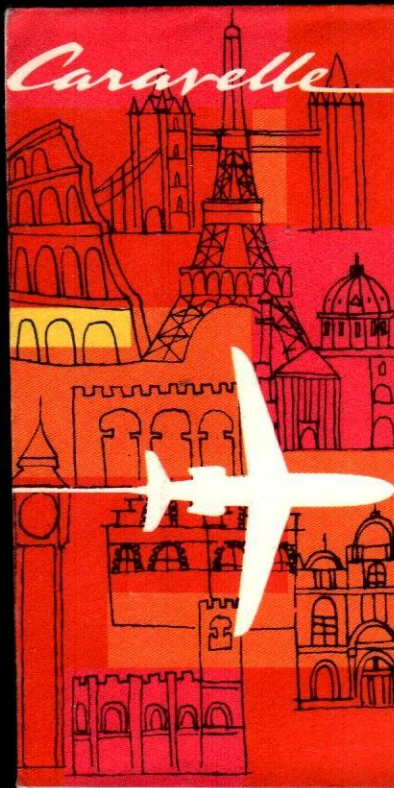


R TORINO
(Ferrovia)
4518

BY AIRMAIL
PAR AVION

Sig.
DI STEFANO MARIO
446 W 23 rd Street

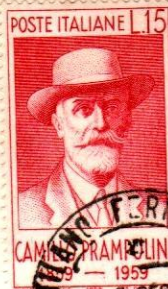
NEW YORK



PREMIER VOL CARAVELLE
6 MAI 1959
AIR FRANCE ROME - PARIS

AIR FRANCE
PARIS (France)





PREMIER VOL CARAVELLE
13 MAI 1959
AIR FRANCE MILAN-PARIS

**RETOUR
A L'ENVOYEUR**

Mr. Raymond Thill
Poste Restante
(France) PARIS



PREMIER VOL CARAVELLE
6 MAI 1959
AIR FRANCE ROME-PARIS

PIETRO SICULIANO
C/O AIR FRANCE
PARIS



PREMIER VOL CARAVELLE
6 MAI 1959
AIR FRANCE ROME-PARIS



PIETRO SICULIANO
C/O AIR FRANCE
PARIS

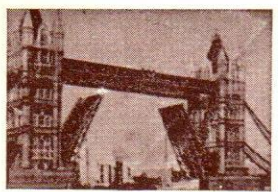


VOL CARAVELLE
6 MAI 1959
AIR FRANCE ROME-PARIS



PIETRO SICULIANO
C/O AIR FRANCE
PARIS

ALITALIA



1° VOLO

S. MARINO
RIMINI
LONDRA

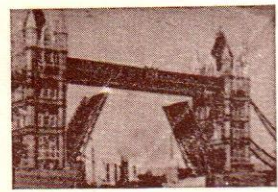


RIMINI
R 007288

PIETRO SICULIANO
C/o ALITALIA
199, Regent ST. WI
LONDRA

Artemisia

ALITALIA



1° VOLO

S. MARINO
RIMINI
LONDRA

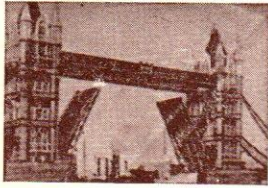


RIMINI
R 007309

PIETRO SICULIANO
C/o ALITALIA
199, Regent ST. WI
LONDRA

Artemisia

ALITALIA



S. MARINO
RIMINI
LONDRA

Artemisia



1° VOLO

ALITALIA
PRIMO COLLESA
RIMINI -
3 GIUGNO

POSTE ITALIANE L. 60



VISITA DI S.M.I. LO
SCIAHINSCHIAH DELL'IRAN
ROMA OTTOBRE 1958

POSTE ITALIANE L. 60

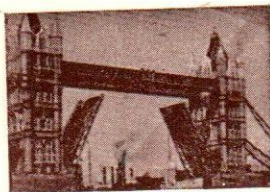


VISITA DI S.M.I. LO
SCIAHINSCHIAH DELL'IRAN
ROMA OTTOBRE 1958

RIMINI
R 007312

PIETRO SICULIANO
C/o ALITALIA
199, Regent ST. WI
LONDRA

ALITALIA



S. MARINO
RIMINI
LONDRA

Artemisia



1° VOLO

ALITALIA
PRIMO COLLEGAMENTO AEREO
RIMINI - LONDRA
3 GIUGNO 1959

POSTE ITALIANE



POSTE ITALIANE



RIMINI
R 007188

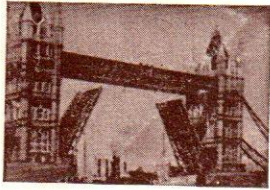
PIETRO SICULIANO
C/o ALITALIA
199, Regent ST. WI
LONDRA

ALITALIA



PRIMO COLLEGAMENTO AEREO
RIMINI - LONDRA
3 GIUGNO 1956

1° VOLO



S. MARINO
RIMINI
LONDRA



Artemisia



PIETRO SICULIANO
C/o ALITALIA
199, Regent ST. WI
LONDRA

RIMINI
R 007187

ALITALIA



REP. DI SAN MARINO

3-6-1956

1° VOLO

SAN MARINO - RIMINI
LONDRA



S. MARINO
RIMINI
LONDRA



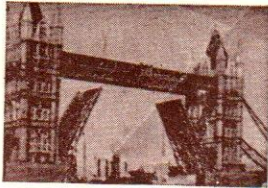
Artemisia

03676



PIETRO SICULIANO
C/o ALITALIA
199, Regent ST. WI
LONDRA

ALITALIA



1° VOLO

REP. DI SAN MARINO

3-6-1959

1° VOLO

SAN MARINO - RIMINI
LONDRA



S. MARINO
RIMINI
LONDRA



03695

PIETRO SICULIANO
C/o ALITALIA
199, Regent ST. WI
LONDRA

Artemisia



RETOUR

SAS

PHILATELIC CLUB - ITALY
POSTE RESTANTE

COPENHAGEN

PRIMO VOLO CARAVELLE
15 Luglio 1959
Roma Copenaghen Stoccolma Oslo

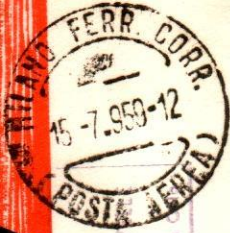
FIRST SAS CARAVELLE JET FLIGHT

SDSTO 370



SDSTO 370

FIRST **SAS** CARAVELLE JET FLIGHT



SAS
PHILATELIC CLUB - ITALY
POSTE RESTANTE

PRIMO VOLO CARAVELLE
15 Luglio 1959
Milano - Copenhagen - Stoccolma

RETOUR

COPENHAGEN



SDSTO 370

FIRST **SAS** CARAVELLE JET FLIGHT



PRIMO VOLO CARAVELLE
15 Luglio 1959
Milano - Copenhagen - Stoccolma

SAS
PHILATELIC CLUB - ITALY
POSTE RESTANTE
COPENHAGEN



SDSTO 376

SAS
PRIMO VOLO CARAVELLE
15 Luglio 1959
Roma Copenaghen Stoccolma Oslo

185 (88)



SAS
PHILATELIC CLUB - ITALY
POSTE RESTANTE

COPENHAGEN

FIRST **SAS** CARAVELLE JET FLIGHT



SDSTO 376

SAS
PRIMO VOLO CARAVELLE
15 Luglio 1959
Roma Copenaghen Stoccolma Oslo



SAS
PHILATELIC CLUB - ITALY
POSTE RESTANTE

STOCKHOLM

FIRST **SAS** CARAVELLE JET FLIGHT

SDSTO 370



SAS
PRIMO VOLO CARAVELLE
15 Luglio 1959
Milano - Copenhagen - Stoccolma - Oslo



SAS
PHILATELIC CLUB - ITALY
POSTE RESTANTE
OSLO

FIRST **SAS** CARAVELLE JET FLIGHT

SDSTO 370



SAS
PRIMO VOLO CARAVELLE
15 Luglio 1959
Milano - Copenhagen - Stoccolma - Oslo



SAS
PHILATELIC CLUB - ITALY
POSTE RESTANTE
STOCKHOLM

FIRST **SAS** CARAVELLE JET FLIGHT

OLE OSLOS



SAS
PRIMO VOLO CARAVELLE
15 Luglio 1959
Roma - Copenhagen - Stoccolma - Oslo



SAS
PHILATELIC CLUB - ITALY
POSTE RESTANTE
OSLO

FIRST **SAS** CARAVELLE JET FLIGHT

OLE OSLOS



SAS
PRIMO VOLO CARAVELLE
17 Luglio 1959
Roma - Atene - Beirut - Bagdad - Teheran



SAS Philatelic Club
Poste Restante
ATHEN
Greece

FIRST **SAS** CARAVELLE JET FLIGHT



SDSTO 370

SAS
PRIMO VOLO CARAVELLE
17 luglio 1959
Roma Atene Beirut Bagdad Teheran



SAS
PHILATELIC CLUB - ITALY
POSTE RESTANTE

ATHENS

FIRST **SAS** CARAVELLE JET FLIGHT



SDSTO 370

SAS
PRIMO VOLO CARAVELLE
17 luglio 1959
Roma Atene Beirut Bagdad Teheran



SAS
PHILATELIC CLUB - ITALY
POSTE RESTANTE

ATHENS

FIRST **SAS** CARAVELLE JET FLIGHT



SOSTO 370

SAS

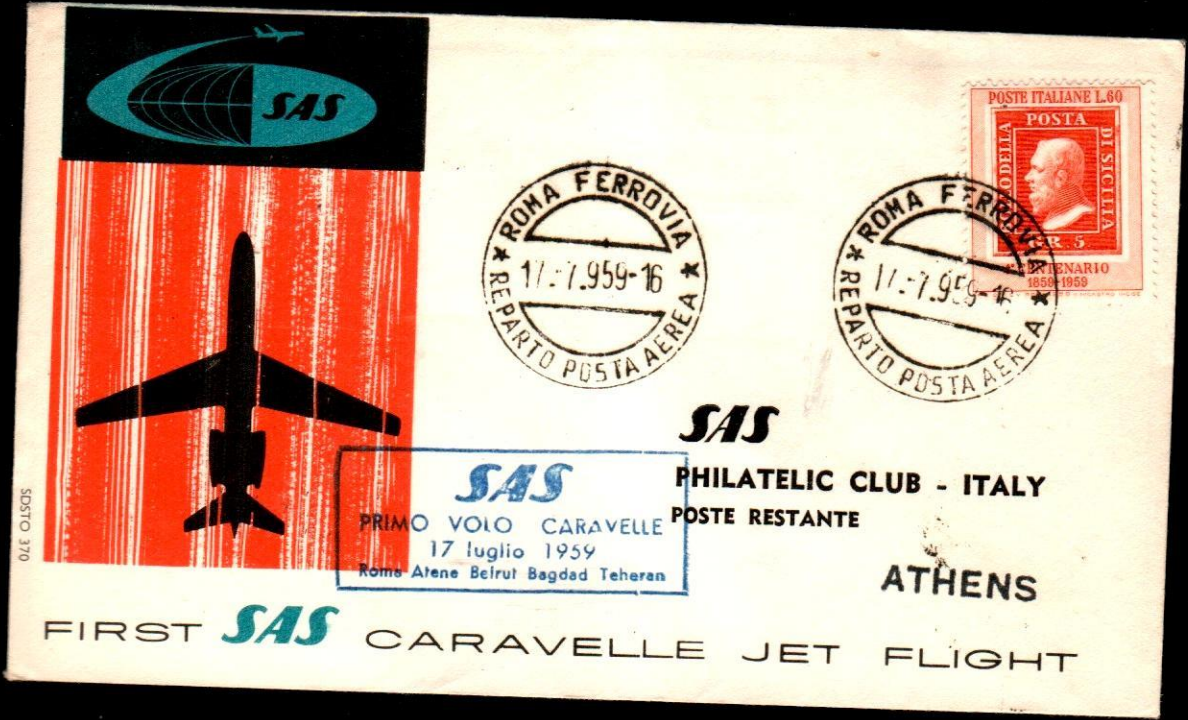
PRIMO VOLO CARAVELLE
17 luglio 1959
Roma Atene Beirut Bagdad Teheran

SAS

PHILATELIC CLUB - ITALY
POSTE RESTANTE

ATHENS

FIRST **SAS** CARAVELLE JET FLIGHT



SOSTO 370

SAS

PRIMO VOLO CARAVELLE
17 luglio 1959
Roma Atene Beirut Bagdad Teheran

SAS

PHILATELIC CLUB - ITALY
POSTE RESTANTE

ATHENS

FIRST **SAS** CARAVELLE JET FLIGHT



SDSTO 370

SAS
PRIMO VOLO CARAVELLE
17 luglio 1959
Roma Atene Beirut Bagdad Teheran



SAS

PHILATELIC CLUB - ITALY
POSTE RESTANTE

ATHENS

FIRST **SAS** CARAVELLE JET FLIGHT



OLE OLSOS

SAS
PRIMO VOLO CARAVELLE
17 luglio 1959
Roma Atene Beirut Bagdad Teheran



SAS

PHILATELIC CLUB - ITALY
POSTE RESTANTE

ATHENS

FIRST **SAS** CARAVELLE JET FLIGHT



SAS
PRIMO VOLO CARAVELLE
 17 luglio 1959
 Roma Atene Beirut Bagdad Teheran

S A S
 Philatelic Club - Italy
 Poste Restante
 ATHENS

FIRST **SAS** CARAVELLE JET FLIGHT

SDSTO 370



SAS
PRIMO VOLO CARAVELLE
 17 luglio 1959
 Roma Atene Beirut Bagdad Teheran

SAS
PHILATELIC CLUB - ITALY
POSTE RESTANTE
ATHENS

FIRST **SAS** CARAVELLE JET FLIGHT

SDSTO 370



91E 01505



SAS
PRIMO VOLO CARAVELLE
17 luglio 1959
Roma Atene Beirut Bagdad Teheran

SAS
PHILATELIC CLUB - ITALY
POSTE RESTANTE
BEIRUT

FIRST **SAS** CARAVELLE JET FLIGHT



SAS10 370



SAS
PRIMO VOLO CARAVELLE
17 luglio 1959
Roma Atene Beirut Bagdad Teheran

SAS
PHILATELIC CLUB - ITALY
POSTE RESTANTE
BEIRUT

FIRST **SAS** CARAVELLE JET FLIGHT



SDSTO 370



SAS

PRIMO VOLO CARAVELLE
17 luglio 1959
Roma Atene Beirut Bagdad Teheran

SAS

PHILATELIC CLUB - ITALY
POSTE RESTANTE

BEIRUT

FIRST **SAS** CARAVELLE JET FLIGHT



SDSTO 370



SAS

PRIMO VOLO CARAVELLE
17 luglio 1959
Roma Atene Beirut Bagdad Teheran

SAS

PHILATELIC CLUB - ITALY
POSTE RESTANTE

BEIRUT

FIRST **SAS** CARAVELLE JET FLIGHT



SAS
PRIMO VOLO CARAVELLE
 17 luglio 1959
 Roma Atene Beirut Bagdad Teheran

SDSTO 370



S A S
 Philatelic Club - Italy
 Poste Restante
 BEIROUT TW

FIRST **SAS** CARAVELLE JET FLIGHT



SAS
PRIMO VOLO CARAVELLE
 17 luglio 1959
 Roma Atene Beirut Bagdad Teheran

SDSTO 370



S A S
 Philatelic Club - Italy
 Poste Restante
 BEIROUT

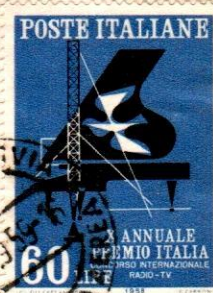
FIRST **SAS** CARAVELLE JET FLIGHT



OLE OLSDS



SAS
PRIMO VOLO CARAVELLE
7 luglio 1959
Roma - Atene - Beirut - Bagdad - Teheran



SAS
PHILATELIC CLUB - ITALY
POSTE RESTANTE

BEIRUT

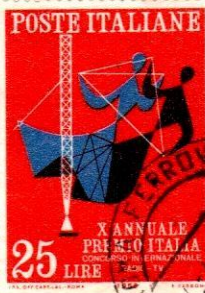
FIRST **SAS** CARAVELLE JET FLIGHT



SDSTO 370



SAS
PRIMO VOLO CARAVELLE
7 luglio 1959
Roma - Atene - Beirut - Bagdad - Teheran



SAS
PHILATELIC CLUB - ITALY
POSTE RESTANTE

BEIRUT

FIRST **SAS** CARAVELLE JET FLIGHT



FIRST **SAS** CARAVELLE JET FLIGHT

SOSTO 370



FIRST **SAS** CARAVELLE JET FLIGHT

SOSTO 370



PRIMO VOLO CARAVELLE
 luglio 1959
 Roma - Alessandria - Bagdad - Teheran

SOSTO 370



S A S
 Philatelic Club - Italy
 Poste Restante

RETOUR
 NON RECLAME
 FIRST **SAS** CARAVELLE JET FLIGHT



PRIMO VOLO CARAVELLE
 luglio 1959
 Roma - Alessandria - Bagdad - Teheran

SOSTO 370



S A S
 Philatelic Club - Italy
 Poste Restante

RETOUR
 NON RECLAME
 FIRST **SAS** CARAVELLE JET FLIGHT



SDSTO 370

RETOUR
NON. RECLAME

SAS
PRIMO VOLO CARAVELLE
17 luglio 1959
Roma - Milano - Beirut - Bagdad - Teheran



SAS
PHILATELIC CLUB - ITALY
POSTE RESTANTE

TEHERAN

FIRST **SAS** CARAVELLE JET FLIGHT



SDSTO 370

SAS
PRIMO VOLO CARAVELLE
17 luglio 1959
Roma - Milano - Beirut - Bagdad - Teheran

RETOUR



SAS
PHILATELIC CLUB - ITALY
POSTE RESTANTE

TEHERAN

FIRST **SAS** NON. RECLAME CARAVELLE JET FLIGHT



PRIMO VOLO CARAVELLE
18 luglio 1959
Roma Ginevra Dusseldorf

04E OLSOS



S A S
Philatelic Club - Italy
Poste Restante

GENEVA

FIRST **SAS** CARAVELLE JET FLIGHT



PRIMO VOLO CARAVELLE
18 luglio 1959
Roma Ginevra Dusseldorf

04E OLSOS



SAS
PHILATELIC CLUB - ITALY
POSTE RESTANTE

GINEVRA

FIRST **SAS** CARAVELLE JET FLIGHT



070
SOSTO

PRIMO VOLO CARAVELLE
18 luglio 1959
Roma Ginevra Düsseldorf

FIRST **SAS** CARAVELLE JET FLIGHT



SAS
PHILATELIC CLUB - ITALY
POSTE RESTANTE

GINEVRA



070
SOSTO

PRIMO VOLO CARAVELLE
18 luglio 1959
Roma Ginevra Dusseldorf

FIRST **SAS** CARAVELLE JET FLIGHT



SAS
PHILATELIC CLUB - ITALY
POSTE RESTANTE

GINEVRA



PRIMO VOLO CARAVELLE
18 luglio 1959
Roma Ginevra Dusseldorf

50STO 370

POSTE ITALIANE L.15



CELEBRAZIONE DI BYRON



POSTE ITALIANE



SAS

PHILATELIC CLUB - ITALY
POSTE RESTANTE

GINEVRA

FIRST **SAS** CARAVELLE JET FLIGHT



PRIMO VOLO CARAVELLE
18 luglio 1959
Roma Ginevra Dusseldorf

50STO 370

ROMA MCMLX



CELEBRAZIONE DI BYRON



POSTE ITALIANE



SAS

PHILATELIC CLUB - ITALY
POSTE RESTANTE

GINEVRA

FIRST **SAS** CARAVELLE JET FLIGHT



SDSTO 370

PRIMO VOLO CARAVELLE
18 luglio 1959
Rome Ginevra Dusseldorf

FIRST **SAS** CARAVELLE JET FLIGHT



SAS

PHILATELIC CLUB - ITALY
POSTE RESTANTE

GINEVRA



04E 01505

SAS
PRIMO VOLO CARAVELLE
18 luglio 1959
Rome Ginevra Dusseldorf

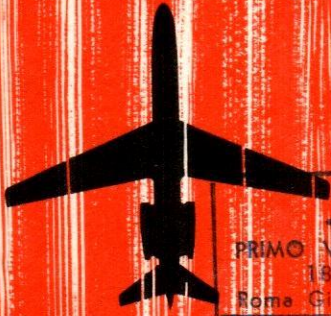


SAS

PHILATELIC CLUB - ITALY
~~86, Via Barberini~~

Poste Restante ~~ROMA~~
DUSSELDORF

FIRST **SAS** CARAVELLE JET FLIGHT



SDSTO 370



SAS
PRIMO VOLO CARAVELLE
18 luglio 1959
Roma Ginevra Dusseldorf

SAS
Philatelic Club, Italy
Poste Restante

DUSSELDORF

FIRST **SAS** CARAVELLE JET FLIGHT



SDSTO 370



SAS
PRIMO VOLO CARAVELLE
18 luglio 1959
Roma Ginevra Dusseldorf

S A S
Philatelic Club - Italy
Poste Restante

DUSSELDORF

FIRST **SAS** CARAVELLE JET FLIGHT



SDSTO 370

SAS
PRIMO VOLO CARAVELLE
18 luglio 1959
Roma Ginevra Dusseldorf



S A S
Philatelic Club - Italy
Poste Restante
DUSSELDORF

FIRST **SAS** CARAVELLE JET FLIGHT



SDSTO 370

SAS
PRIMO VOLO CARAVELLE
18 luglio 1959
Roma Ginevra Dusseldorf



SAS Philatelic Club
Poste Restante
DUSSELDORF AIRPORT
Germany

FIRST **SAS** CARAVELLE JET FLIGHT



04E OLSOS 270



SAS
PRIMO VOLO CARAVELLE
21 Luglio 1959
Roma - Stoccarda

SAS Philatelic Club
Poste Restante
STUTTGART AIRPORT
Germany

FIRST **SAS** CARAVELLE JET FLIGHT



04E OLSOS 270



SAS
PRIMO VOLO CARAVELLE
21 Luglio 1959
Roma - Stoccarda

zurück 28. JULI 1959

SAS
Philatelic Club, Italy
Poste Restante

RETOUR STUTTGART

FIRST **SAS** CARAVELLE JET FLIGHT



OLE OLSON



SAS
PRIMO VOLO CARAVELLE
21 Luglio 1959
Rome - Stoccarda

Zurück 8. JULI 1959

SAS
Philatelic Club, Italy
Poste Restante

RETOUR - STUTTGART

FIRST **SAS** CARAVELLE JET FLIGHT



OLE OLSON



SAS
PRIMO VOLO CARAVELLE
21 Luglio 1959
Rome - Stoccarda

SAS
Philatelic Club, Italy
Poste Restante
STUTTGART

FIRST **SAS** CARAVELLE JET FLIGHT



043 OLSOS

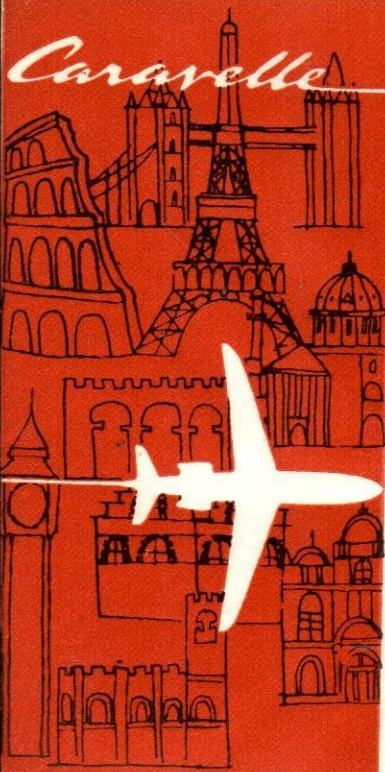


SAS
PRIMO VOLO CARAVELLE
21 Luglio 1959
Roma - Stoccarda

SAS
Philatelic Club, Italy
Poste Restante
STUTT GART

FIRST **SAS** CARAVELLE JET FLIGHT

Caravelle



PRIMO VOLO CARAVELLE
25 AGOSTO 1959
AIR FRANCE ROMA - BEYROUTH

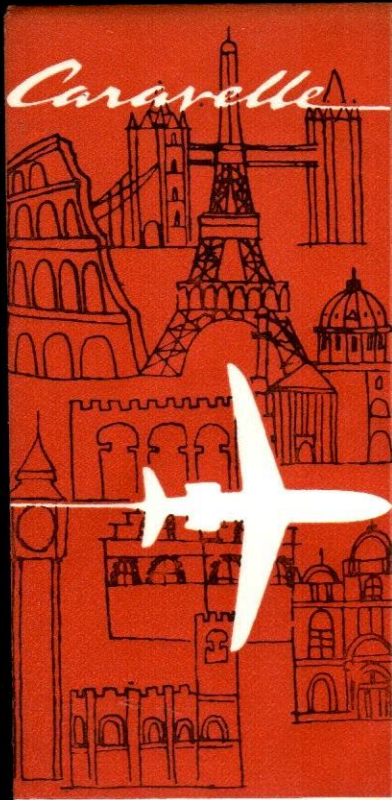
AIR FRANCE
rue Jouvenel
BEYROUTH (Liban)



PAR AVION BY AIR MAIL

AIR FRANCE

MIT LUFTPOST CORREO AEREO



PRIMO VOLO CARAVELLE
30 AGOSTO 1959
AIR FRANCE ROMA - TEL AVIV

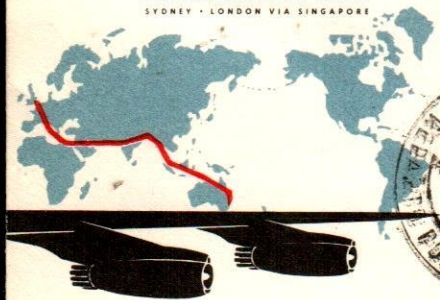
AIR FRANCE
32 rue Allenby
TEL AVIV (Israel)



BY AIRMAIL • PAR AVION

BOEING 707

FIRST SCHEDULED JET FLIGHT
 SYDNEY • LONDON VIA SINGAPORE



QANTAS

AUSTRALIA'S OVERSEAS AIRLINE

QANTAS Boeing Jet

Servizio inaugurato Europa-Australia
 VIA SINGAPORE

ROMA - SYDNEY

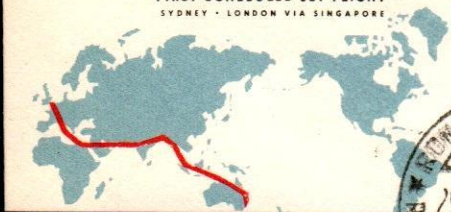
29.10.1959

Qantas Empire Airways Limited,
 Qantas House,
 70 Hunter Street,
 SYDNEY, N.S.W.,
 Australia.

BY AIRMAIL • PAR AVION

BOEING 707

FIRST SCHEDULED JET FLIGHT
SYDNEY - LONDON VIA SINGAPORE



QANTAS

AUSTRALIA'S OVERSEAS AIRLINE



Qantas Empire Airways Limited,
Qantas House,
70 Hunter Street,
SYDNEY, N.S.W.,
Australia.

Via TWA Jet



4 DICEMBRE 1959
VOLO INAUGURALE
ROMA - NEW YORK
INTERCONTINENTAL TWA
JET BOEING 707
stampe raccomandate

R
ROMA (A. D.)
N° 1409

Mr. Enzo PARISI
Poste Restante
P A R I S - Aviatio

Via TWA Jet



4 DICEMBRE 1959
VOLO INAUGURALE
ROMA - NEW YORK
JET INTERCONTINENTAL BOEING 707 TWA

ROMA (A. D.)
No 1401

Mr. Enzo PARISI
Poste Restante
P A R I S - Aviatice

stampe raccomandate



INAUGURAL FLIGHT TWA
JET BOEING 707
ROMA - NEW YORK

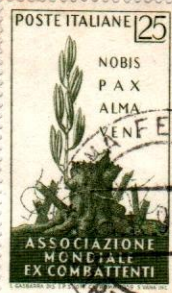


Mr. W. H. PLUCHEL
TWA Director Mail & Express
380, Madison Avenue

NEW YORK (U.S.A.)

no 6

Via TWA Jet



4 DICEMBRE 1959
VOLO INAUGURALE
ROMA - NEW YORK
JET INTERCONTINENTAL TWA
BOEING 707
stampe raccomandate

ROMA (A. D.)
No 1435

Mr. Enzo PARISI
Poste Restante
PARIS - Aviatie

Via TWA Jet

ROMA (A. D.)
No 1173



4 DICEMBRE 1959
VOLO INAUGURALE
ROMA - NEW YORK
JET INTERCONTINENTAL TWA
BOEING 707
stampe raccomandate

Egr. Sig.
DI STEFANO MARIO
446 W 23 Rd Street
NEW YORK
N.Y. - U.S.A.

Via TWA Jet

R
ROMA
(A. D.)
N° 1347



4 DICEMBRE 1959
VOLO INAUGURALE
ROMA - NEW YORK
JET INTERCONTINENTAL TWA
BOEING 707

Egr. Sig.
DI STEFANO MARIO
446 W 23 Rd Street
NEW YORK
N.Y. - U.S.A.

Via TWA Jet



4 DICEMBRE 1959
VOLO INAUGURALE
ROMA - NEW YORK
JET INTERCONTINENTAL TWA
BOEING 707

stampe raccomandate

ROMA
(A. D.)
N° 1227

Egr. Sig.
DI STEFANO MARIO
446 W 23 Rd Street
NEW YORK
N.Y. - U.S.A.

Via TWA Jet



4 DICEMBRE 1959
VOLO INAUGURALE
ROMA - NEW YORK
INTERCONTINENTAL
JET BOEING 707 **TWA**

stampe raccomandate

R ROMA (A. D.)
N° 1233

Egr. Sig.
DI STEFANO MARIO
446 W 23 Rd Street
NEW YORK
N.Y. - U.S.A.

Via TWA Jet



4 DICEMBRE 1959
VOLO INAUGURALE
ROMA - NEW YORK
INTERCONTINENTAL
JET BOEING 707 **TWA**

stampe raccomandate

R ROMA (A. D.)
N° 1273

Egr. Sig.
DI STEFANO MARIO
446 W 23 Rd Street
NEW YORK
N.Y. - U.S.A.

Via TWA Jet

R ROMA (A. D.) № 1255



4 DICEMBRE 1959
VOLO INAUGURALE
ROMA - NEW YORK
INTERCONTINENTAL **TWA**
JET
BOEING 707
PER VIA AEREA
PAR AVION
BY AIR MAIL
stampe raccomandate

Egr. Sig.
DI STEFANO MARIO
446 W 23 Rd Street
NEW YORK
N.Y. - U.S.A.

Via TWA Jet



4 DICEMBRE 1959
VOLO INAUGURALE
ROMA - NEW YORK
INTERCONTINENTAL **TWA**
JET
BOEING 707

PER VIA AEREA
PAR AVION
BY AIR MAIL
stampe raccomandate

R ROMA (A. D.) № 1311



Egr. Sig.
DI STEFANO MARIO
446 W 23 Rd Street
NEW YORK
N.Y. - U.S.A.

Via TWA Jet



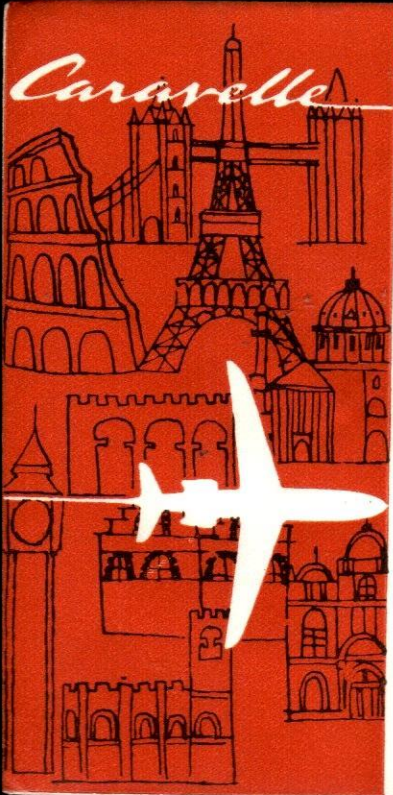
4 DICEMBRE 1959
VOLO INAUGURALE
ROMA - NEW YORK
JET INTERCONTINENTAL **TWA**
BOEING 707

stampe raccomandate

BY AIR MAIL

R ROMA (A. D.) N° 1251

Egr. Sig.
DI STEFANO MARIO
446 W 23 Rd Street
NEW YORK
N.Y. - U.S.A.

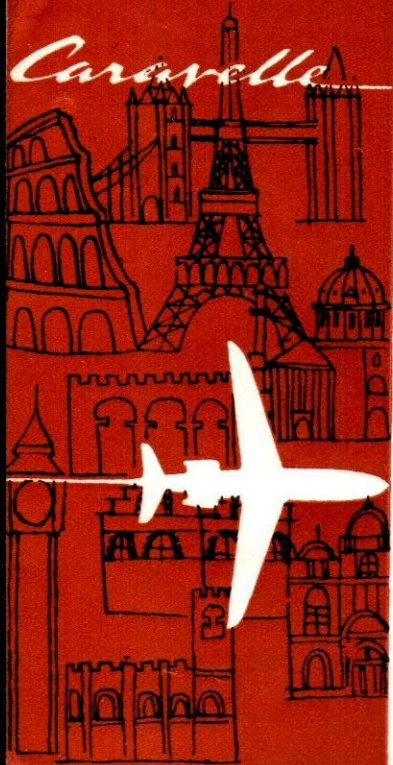


PREMIER VOL CARAVELLE
18 DECEMBRE 1959
AIR FRANCE ROME-LE CAIRE

AIR FRANCE
2 Midan Solimen Pecha
LE CAIRE

PAR AVION BY AIR MAIL
AIR FRANCE
MIT LUFTPOST CORREO AEREO

Caravelle



PREMIER VOL CARAVELLE
18 DECEMBRE 1959
AIR FRANCE ROME-LE CAIRE

AIR FRANCE
2 Midan Soliman Pacha
LE CAIRE



Via ALITALIA
VOLO INAUGURALE
ROMA - MILANO
MONTREAL - NEW YORK



POSTA AEREA
PAR AVION - BY AIR MAIL

CAPSO
International Airport
MONTREAL-Canada

Via ALITALIA
VOLO INAUGURALE
ROMA - MILANO
MONTREAL - NEW YORK



POSTA AEREA
PAR AVION - BY AIR MAIL



CAPSO
International Airport
MONTREAL-Canada

Via ALITALIA
VOLO INAUGURALE
ROMA - MILANO
MONTREAL - NEW YORK



POSTA AEREA
PAR AVION - BY AIR MAIL



CAPSO
International Airport
MONTREAL-Canada

Via ALITALIA
 VOLO INAUGURALE
 ROMA - MILANO
 MONTREAL - NEW YORK



POSTA AEREA
 PAR AVION - BY AIR MAIL



CAPSO
 International Airport
 MONTREAL - Canada

ALITALIA



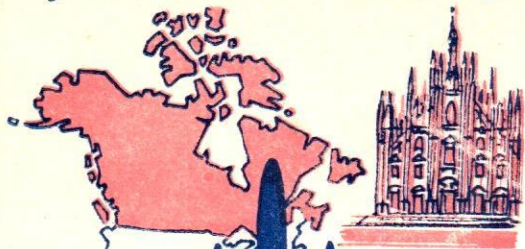
volo inaugurale
 first flight
 première liaison

ROMA - MILANO - MONTREAL
 3 MARZO 1960



ALITALIA
 1465 Peel Street
 Sheraton Mount Royal Hotel
 MONTREAL P. Q. Canada

ALITALIA



volo inaugurale
first flight
première liaison



ROMA • MILANO • MONTREAL
3 MARZO 1960



ALITALIA
1455 Peel Street
Sheraton Mount Royal Hotel
MONTREAL P. Q. Canada

Via ALITALIA
VOLO INAUGURALE
ROMA - MILANO
MONTREAL - NEW YORK



POSTA AEREA
PAR AVION - BY AIR MAIL



Vincenzo PARISI
International Airport
NEW YORK - N.Y.

Via ALITALIA
VOLO INAUGURALE
ROMA - MILANO
MONTREAL - NEW YORK



POSTA AEREA
PAR AVION - BY AIR MAIL



Vincenzo PARISI
International Airport
NEW YORK - N.Y.

Via ALITALIA
PER VIA AEREA
Mod. 24-R bis



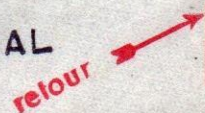
PRIMO COLLEGAMENTO POSTALE
MILANO - MONTREAL
6-3-1960
ALITALIA AZ 652

POSTA AEREA
PAR AVION - BY AIR MAIL



VINCENZO PARISI
INTERNATIONAL AIRPORT

MONTREAL



Via ALITALIA

PER VIA AEREA
PAR AVION

Mod. 24-R

PRIMO COLLEGAMENTO POSTALE
MILANO - MONTREAL
6-3-1960

ALITALIA AZ 652

POSTA AEREA
PAR AVION - BY AIR MAIL



VINCENZO PARISI
INTERNATIONAL AIRPORT

MONTREAL

retour

Via ALITALIA

PER VIA AEREA

Mod. 24-R bis

PRIMO COLLEGAMENTO POSTALE
MILANO - MONTREAL
6-3-1960

ALITALIA AZ 652

POSTA AEREA
PAR AVION - BY AIR MAIL



CAPSO
International Airport
MONTREAL-Canada

retour

Via ALITALIA

PER VIA AEREA
PAR AVION

Mod. 24-R

PRIMO COLLEGAMENTO POSTALE

MILANO - MONTREAL

6-3-1960

ALITALIA AZ 652

POSTA AEREA

PAR AVION - BY AIR MAIL



retour

CAPSO
International Airport
MONTREAL - Canada



LUFTHANSA

bietet
ein Erlebnis
neuer Art:

BOEING
Jet INTERCONTINENTAL

LH 420A

Hamburg-Frankfurt-New York



HAMBURG - FRANKFURT - NEW YORK
LH 420A am 17. 3. 1960

Vincenzo PARISI
International Airport
NEW YORK - N.Y.



LUFTHANSA

bietet
ein Erlebnis
neuer Art:

BOEING
Jet INTERCONTINENTAL
LH 420 A

Hamburg-Frankfurt-New York



HAMBURG - FRANKFURT - NEW YORK
LH 420A am 17. 3. 1960

CAPSO
International Airport
NEW YORK - N.Y.

VIA
DEUTSCHE
LUFTHANSA
JET



POSTA AEREA
PAR AVION - BY AIR MAIL

Vincenzo PARISI
International Airport
NEW YORK - N.Y.

VIA
DEUTSCHE
LUFTHANSA
JET



POSTA AEREA
PAR AVION - BY AIR MAIL

Vincenzo PARISI
International Airport
NEW YORK - N.Y.

VIA
DEUTSCHE
LUFTHANSA
JET



POSTA AEREA
PAR AVION - BY AIR MAIL

Vincenzo PARISI
International Airport
NEW YORK - N.Y.

VIA
DEUTSCHE
LUFTHANSA
JET



mit flug LH 420 am 1.4.60

POSTA AEREA
PAR AVION - BY AIR MAIL

Vincenzo PARISI
International Airport
NEW YORK - N.Y.

VIA
DEUTSCHE
LUFTHANSA
JET



POSTA AEREA
PAR AVION - BY AIR MAIL

mit flug LH 420 am 1.4.60

Vincenzo PARISI
International Airport
NEW YORK - N.Y.



FRANKFURT - NEW YORK
LH 420 am 1. 4. 1960

CAPSO
International Airport
NEW YORK - N.Y.



FRANKFURT - NEW YORK
LH 420 am 1. 4. 1960

CAPSO
International Airport
NEW YORK - N.Y.

ALITALIA



ROMA - AMSTERDAM
1° aprile 1960



Spett. ALITALIA
Leidseplein 7
AMSTERDAM

ALITALIA



ROMA - AMSTERDAM
1° aprile 1960



Spett. ALITALIA
Leidseplein 7
AMSTERDAM



POSTA AEREA
PAR AVION - BY AIR MAIL



Terug afzender
Retour à l'expéditeur

VINCENZO PARISI
POSTE RESTANTE
AMSTERDAM



POSTA AEREA
PAR AVION - BY AIR MAIL



Terug afzender
Retour à l'expéditeur

VINCENZO PARISI
POSTE RESTANTE
AMSTERDAM



Terug afzender
Retour à l'expéditeur

POSTA AEREA
PAR AVION - BY AIR MAIL

VINCENZO PARISI
POSTE RESTANTE

AMSTERDAM



Terug afzender
Retour à l'expéditeur

POSTA AEREA
PAR AVION - BY AIR MAIL

VINCENZO PARISI
POSTE RESTANTE

AMSTERDAM



Terug arzender
Retour à l'expediteur

POSTA AEREA
PAR AVION - BY AIR MAIL

VINCENZO PARISI
POSTE RESTANTE

AMSTERDAM

MILANO FERR. CORR.
1-4-1960
POSTA AEREA



Terug arzender
Retour à l'expediteur

POSTA AEREA
PAR AVION - BY AIR MAIL

VINCENZO PARISI
POSTE RESTANTE

AMSTERDAM

MILANO FERR. CORR.
1-4-1960
POSTA AEREA





SAS

FIRST CARAVELLE JET FLIGHT
ROME - COPENHAGEN - MOSCOW



SAS

PHILATELIC CLUB - ITALY
POSTE RESTANTE

(U.S.S.R.)

MOSCOW



SAS

FIRST CARAVELLE JET FLIGHT
ROME - COPENHAGEN - MOSCOW



SAS

PHILATELIC CLUB - ITALY
POSTE RESTANTE

(U.S.S.R.)

MOSCOW





SAS

FIRST CARAVELLE JET FLIGHT
ROME - COPENHAGEN - MOSCOW



SAS

PHILATELIC CLUB - ITALY
POSTE RESTANTE

(U.S.S.R.)

MOSCOW



POSTA AEREA
PAR AVION - BY AIR MAIL

VINCENZO PARISI
POSTE RESTANTE

WIEN



POSTA AEREA
PAR AVION - BY AIR MAIL

VINCENZO PARISI
POSTE RESTANTE

WIEN



POSTA AEREA
PAR AVION - BY AIR MAIL

VINCENZO PARISI
POSTE RESTANTE

VIENNA











ALITALIA



inaugural flight
volo inaugurale



ROMA - PRAGA
5 aprile 1960

ALITALIA Station
Ruzyně Airport
PRAGUE



SAS
ROMA - DHAHRAN
6 APR. 1960
CARAVELLE



SAS
primo volo ROMA - DHAHRAN



SAS
PHILATELIC CLUB - ITALY
POSTE RESTANTE
(ARABIA SAUDITA) **DHAHRAN**







ALITALIA

Primo volo - Premier liaison



CARAVELLE jet

23 · 5 · 1960



Spett. ALITALIA

30, Rue du 4 Septembre

PARIS



ALITALIA

Primo volo - Premier liaison



CARAVELLE jet

23 · 5 · 1960



Spett. ALITALIA

30, Rue du 4 Septembre

PARIS

ALITALIA
Primo volo - first flight



CARAVELLE jet
23 · 5 · 1960



Spett. **ALITALIA**
199 Regent St. W 1
LONDON

PRIMO COLLEGAMENTO
CON BOEING JET INTERCONTINENTAL



MILANO
31-5-1960
LEOPOLDVILLE



PREMIERE LIAISON AERIENNE
EN BOEING JET INTERCONTINENTAL



VINCENZO PARISI
POSTE RESTANTE

LEOPOLDVILLE

PRIMO COLLEGAMENTO
CON BOEING JET INTERCONTINENTAL



MILANO
31-5-1960
LEOPOLDVILLE



PREMIERE LIAISON AERIENNE
EN BOEING JET INTERCONTINENTAL



VINCENZO PARISI
POSTE RESTANTE

LEOPOLDVILLE

PRIMO COLLEGAMENTO
CON BOEING JET INTERCONTINENTAL



MILANO
31-5-1960
LEOPOLDVILLE



PREMIERE LIAISON AERIENNE
EN BOEING JET INTERCONTINENTAL



POSTA AEREA
PAR AVION - BY AIR MAIL

VINCENZO PARISI
POSTE RESTANTE
LEOPOLDVILLE
JOHANNESBURG

AÉROGRAMME

PAR AVION

VIA AEREA

JUL 14



Mr.
MARIO DI STEFANO
Poste Restante
NEW-YORK - N.Y.

È valido per i Paesi extraeuropei.
Valable pour les Pays extraeuropéens.

AÉROGRAMME

PAR AVION

VIA AEREA



Mr.
MARIO DI STEFANO
Poste Restante
NEW-YORK - N.Y.

È valido per i Paesi extraeuropei.
Valable pour les Pays extraeuropéens.

ALITALIA



NEW YORK



ROMA

*Primo volo DC-8 jet first flight
2 giugno 1960*



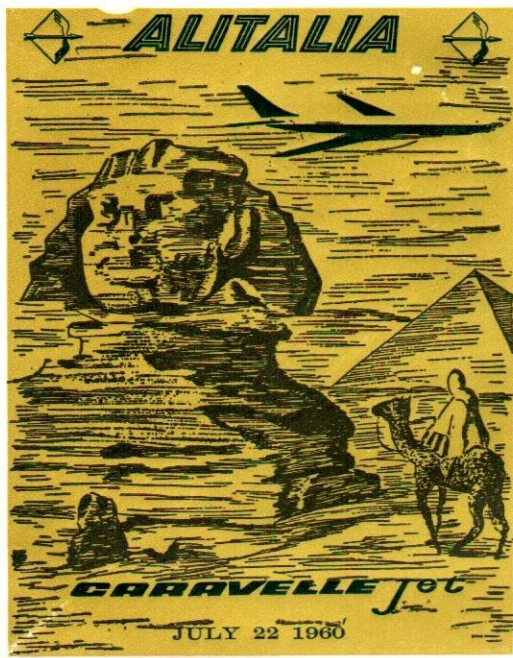
Spett. **ALITALIA**
666 Fifth Avenue
NEW YORK

Via TWA Jet

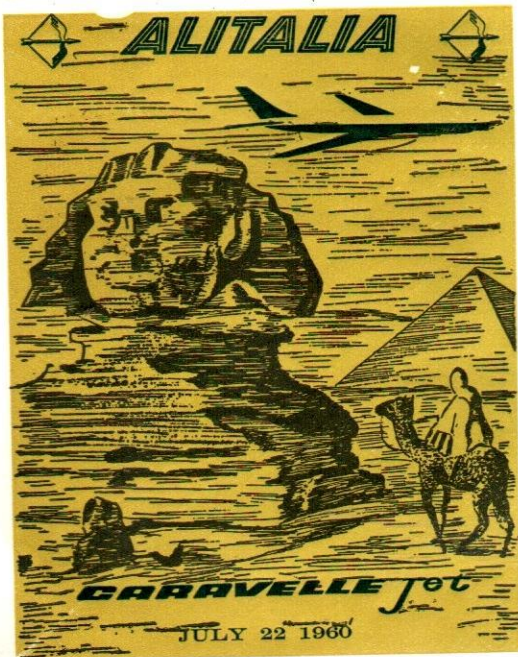


POSTA AEREA
PAR AVION - BY AIR MAIL

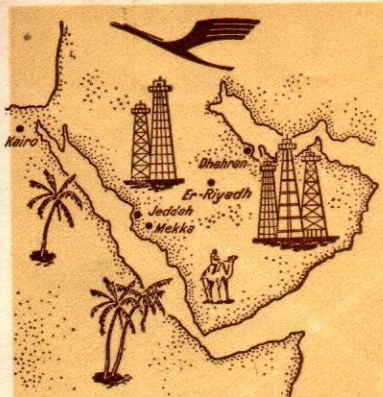
Vincenzo PARISI
International Airport
NEW YORK - N.Y.



ALITALIA
 Nile Hilton Hotel
 Midan Tahrir
 CAIRO



ALITALIA
 Nile Hilton Hotel
 Midan Tahrir
 CAIRO



DHAHRAN
ERÖFFNUNGSFLUG LH 646/647

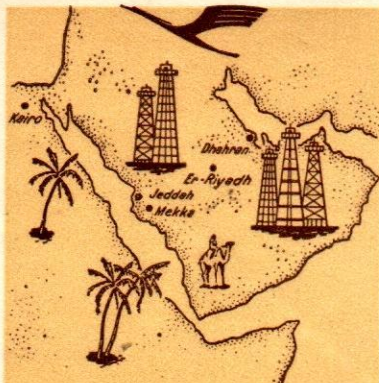


A L'ENVOYEUR



Herrn
Wolfgang Winkel
Poste restante

DHAHRAN / Saudi - Arabien



DHAHRAN
FIRST FLIGHT LH 647/646

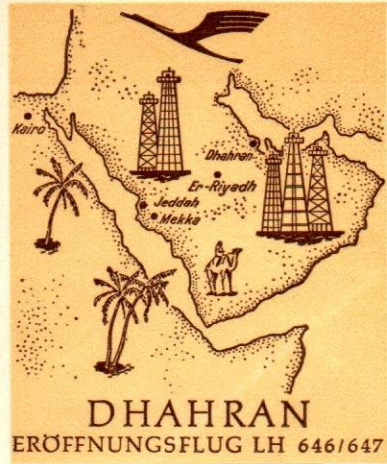


A L'ENVOYEUR



Herrn
Wolfgang Winkel
Poste restante

DHAHRAN / Saudi - Arabien



A L'ENVOYEUR

Herrn
Wolfgang Winkel
Poste restante

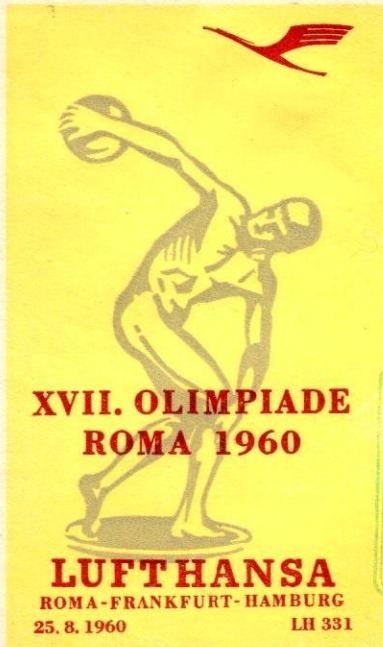
DHAHRAN / Saudi-Arabien

LUFTSPORTING AALEN
25. 8. 1960
ERÖFFNUNG
DER XVII. OLYMPIADE IN ROM



LÄNDEPLATZ
AALEN-ELCHINGEN

LYDIA GRABOWSKI
FREUDENSTADT/ALLEMAGNE



Herrn
Wolfgang Winkel
Poste restante
HAMBURG-Flughafen
Germania



Herrn
Wolfgang Winkel
Poste restante
HAMBURG-Flughafen
Germania



SDSTO 370



SAS PHILATELIC CLUB FOR ITALY
Poste Restante

ANCHORAGE

A L'ENVOYEUR

FIRST **SAS** DOUGLAS DC-8 JET FLIGHT



SDSTO 370



SAS PHILATELIC CLUB FOR ITALY
Poste Restante

ANCHORAGE

A L'ENVOYEUR

FIRST **SAS** DOUGLAS DC-8 JET FLIGHT



01E 01505



SAS PHILATELIC CLUB FOR ITALY
Poste Restante

TOKYO

FIRST **SAS** DOUGLAS DC-8 JET FLIGHT



01E 01505



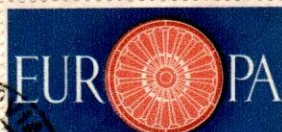
SAS PHILATELIC CLUB FOR ITALY
Poste Restante

TOKYO

FIRST **SAS** DOUGLAS DC-8 JET FLIGHT



RETOUR



CEPT
POSTE ITALIANE



non réclamé

SAS

Philatelic Club for ITALY

Poste Restante

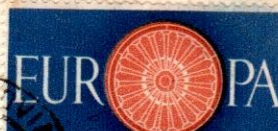
~~(Danimarca)~~ Copenhagen

FIRST **SAS** DOUGLAS DC-8 JET FLIGHT

SDSTO 370



RETOUR



CEPT
POSTE ITALIANE



non réclamé

SAS

Philatelic Club for ITALY

Poste Restante

~~(Danimarca)~~ Copenhagen

FIRST **SAS** DOUGLAS DC-8 JET FLIGHT

SDSTO 370



OLE OLSOS

RETOUR



non réclamé

SAS

Philatelic Club for ITALY

Poste Restante

Copenhagen

FIRST SAS DOUGLAS DC-8 JET FLIGHT

ALITALIA



DC-8 Jet

PRIMO VOLO - FIRST FLIGHT
ROMA - JOHANNESBURG
8 - 11 - 1960

VIA
ATENE - NAIROBI - SALISBURY



CARLO CERUTTI

Poste Restante

ATENE

ALITALIA



DC - 8 *Jet*

PRIMO VOLO - FIRST FLIGHT
ROMA - JOHANNESBURG
8 - 11 - 1960

VIA
ATENE - NAIROBI - SALISBURY



CARLO CERUTTI
Poste Restante
ATENE
- Central Airport.

ALITALIA



DC - 8 *Jet*

PRIMO VOLO - FIRST FLIGHT
ROMA - JOHANNESBURG
8 - 11 - 1960

VIA
ATENE - NAIROBI - SALISBURY



CARLO CERUTTI
Poste Restante
ATENE
- Central Airport.

ALITALIA



DC - 8 *Jet*

PRIMO VOLO - FIRST FLIGHT
ROMA - JOHANNESBURG
8 - 11 - 1960

VIA
ATENE - NAIROBI - SALISBURY



CARLO CERUTTI

Poste Restante

ATENE

- Central Airport.

ALITALIA



DC - 8 *Jet*

PRIMO VOLO - FIRST FLIGHT
ROMA - JOHANNESBURG
8 - 11 - 1960

VIA
ATENE - NAIROBI - SALISBURY



CARLO CERUTTI

Poste Restante

NAIROBI Airport.

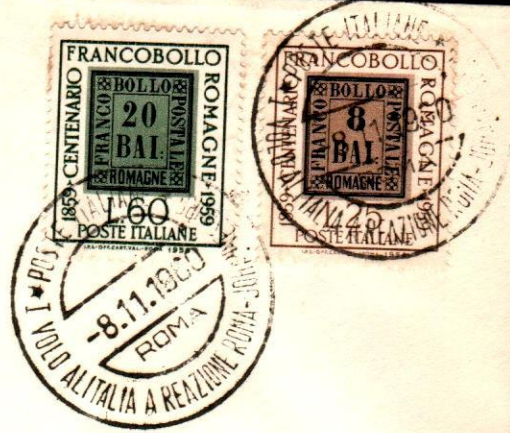
ALITALIA



DC - 8 Jet

PRIMO VOLO - FIRST FLIGHT
ROMA - JOHANNESBURG
8 - 11 - 1960

VIA
ATENE - NAIROBI - SALISBURY



CARLO CERUTTI

Poste Restante

NAIROBI Airport.

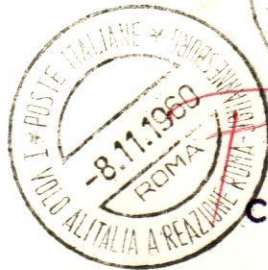
ALITALIA



DC - 8 Jet

PRIMO VOLO - FIRST FLIGHT
ROMA - JOHANNESBURG
8 - 11 - 1960

VIA
ATENE - NAIROBI - SALISBURY



CARLO CERUTTI

Poste Restante

SALISBURY Airport.

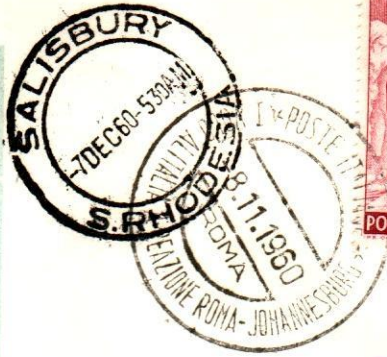
ALITALIA



DC - 8 Jet

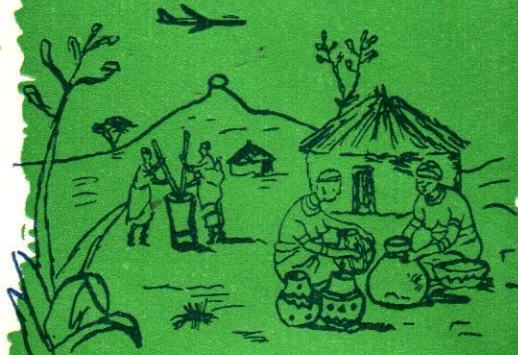
PRIMO VOLO - FIRST FLIGHT
ROMA - JOHANNESBURG
8 - 11 - 1960

VIA
ATENE - NAIROBI - SALISBURY



~~TO~~
~~CARLO CERUTTI~~
~~Poste Restante~~
~~SALISBURY Airport.~~

ALITALIA



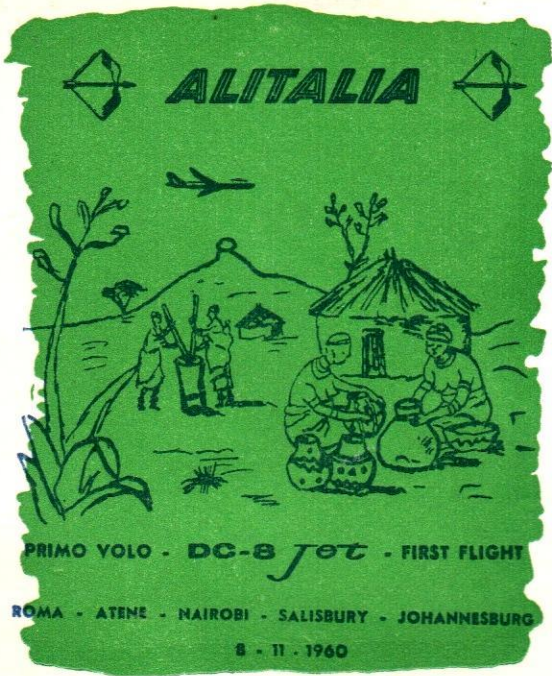
PRIMO VOLO - DC-8 Jet - FIRST FLIGHT

ROMA - ATENE - NAIROBI - SALISBURY - JOHANNESBURG

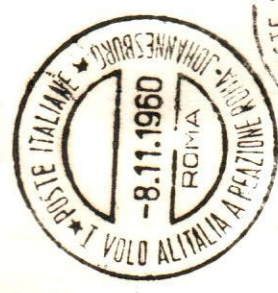
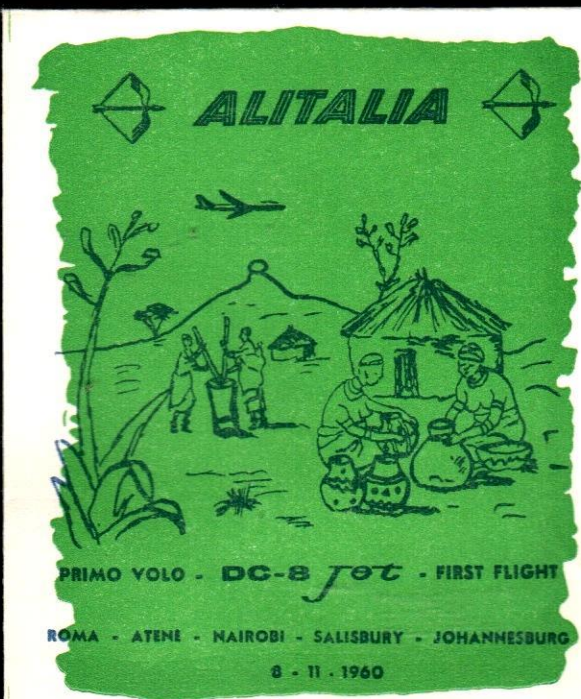
8 - 11 - 1960



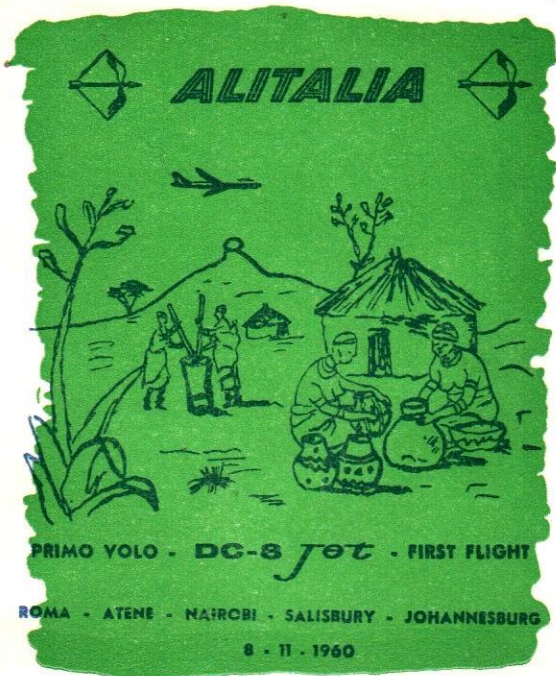
ALITALIA
Victory House
JOHANNESBURG



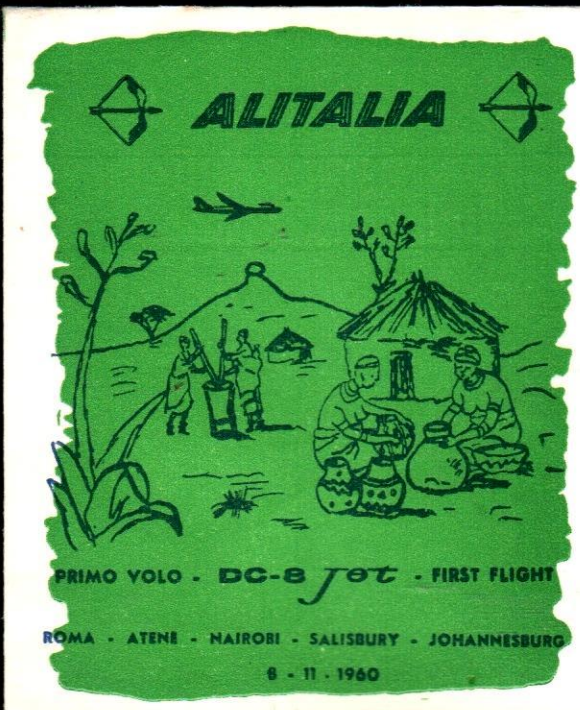
ALITALIA
 Victory House
 JOHANNESBURG



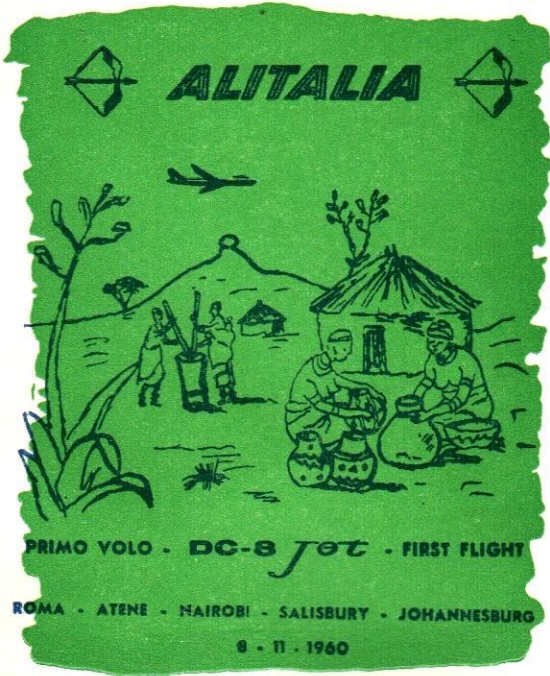
ALITALIA
 Victory House
 JOHANNESBURG



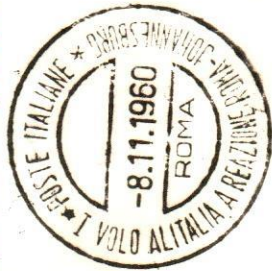
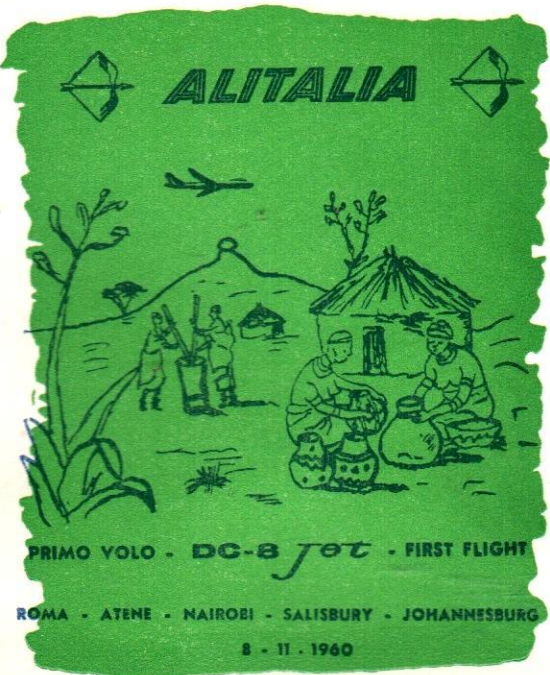
ALITALIA
 Victory House
 JOHANNESBURG



ALITALIA
 Victory House
 JOHANNESBURG



ALITALIA
 Victory House
 JOHANNESBURG



ALITALIA
 Victory House
 JOHANNESBURG

PRIMO VOLO BOEING JET
13 DICEMBRE 1960
AIR FRANCE ROMA-TOKYO

VOLO RIPORTATO AL 1° GENNAIO 1961



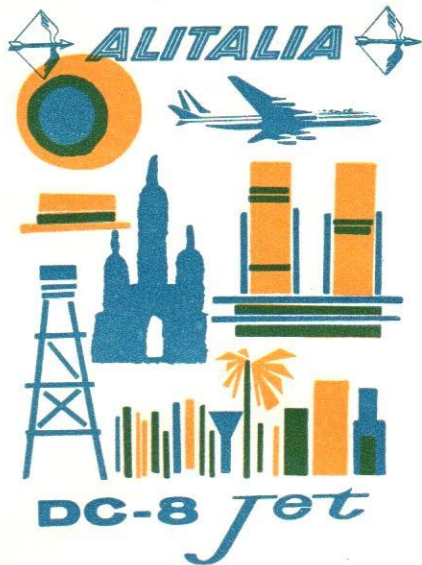
Madame M. PIERRE
Poste Restante
A L'ENVOI
TOKYO - AIRPORT



ROMA - MILANO - CARACAS. 24 - 5 - 1961



ALITALIA
Av. Urdaneta Esq. de la Pelota
Apartado de Correo. 2322
CARACAS



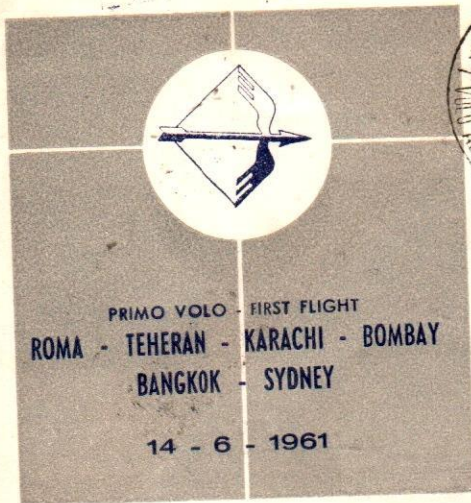
ROMA - MILANO - CARACAS. 24 - 5 - 1961



ALITALIA
 Av. Urdaneta Esq. de la Pelota
 Apartado de Correo, 2322
 CARACAS

ALITALIA

STAMPE
 RACCOMANDATA



DC - 8 Jet



CARLO CERUTTI
 Poste Restante
TEHERAN

ALITALIA

STAMPE
RACCOMANDATA



PRIMO VOLO - FIRST FLIGHT
ROMA - TEHERAN - KARACHI - BOMBAY
BANGKOK - SYDNEY

14 - 6 - 1961

DC - 8 Jet

ROMA A.D.
00907 #
ACCEZZ. RACC. TE

CARLO CERUTTI
Poste Resante
KARAKI

ALITALIA

STAMPE
RACCOMANDATA



PRIMO VOLO - FIRST FLIGHT
ROMA - TEHERAN - KARACHI - BOMBAY
BANGKOK - SYDNEY

14 - 6 - 1961

DC - 8 Jet


ROMA A.D.
00876 #
ACCEZZ. RACC. TE

CARLO CERUTTI
Poste Resante
BOMBAY

RETOUR

ALITALIA

STAMPE
RACCOMANDATA



PRIMO VOLO - FIRST FLIGHT
ROMA - TEHERAN - KARACHI - BOMBAY
BANGKOK - SYDNEY
14 - 6 - 1961


DC - 8 Jet



CARLO CERUTTI
Poste Reserie
BANGKOK

ALITALIA

STAMPE
RACCOMANDATA



PRIMO VOLO - FIRST FLIGHT
ROMA - TEHERAN - KARACHI - BOMBAY
BANGKOK - SYDNEY
14 - 6 - 1961

DC - 8 Jet



CARLO CERUTTI
Poste Reserie
BANGKOK

ALITALIA



ROMA - TEHERAN - KARACHI - BOMBAY
BANGKOK - SYDNEY
14 - 6 - 1961



ALITALIA

c/o T.A.I. Rindersley House
33/35 Bligh Street

SYDNEY

ALITALIA



ROMA - TEHERAN - KARACHI - BOMBAY
BANGKOK - SYDNEY
14 - 6 - 1961



ALITALIA

c/o T.A.I. Rindersley House
33/35 Bligh Street

SYDNEY

ALITALIA



ROMA - TEHERAN - KARACHI - BOMBAY
BANGKOK - SYDNEY
14 - 6 - 1961



ALITALIA

c/o T.A.I. Rindersley House
33/35 Bligh Street

SYDNEY

ALITALIA



ROMA - TEHERAN - KARACHI - BOMBAY
BANGKOK - SYDNEY
14 - 6 - 1961



ALITALIA

c/o T.A.I. Rindersley House
33/35 Bligh Street

SYDNEY

ALITALIA

ROMA A.D.
N. 000020
ACCETTAZ. RACC. TE

PRIMO VOLO - FIRST FLIGHT
ROMA - MILANO - DAKAR - RIO DE JANEIRO
SAN PAOLO - BUENOS AIRES
16. 6. 1961

DC - 8 Jet

STAMPE
RACCOMANDATA



CARLO CERUTTI
Poste Restante
DAKAR

ALITALIA

ROMA A.D.
N. 000012
ACCETTAZ. RACC. TE

PRIMO VOLO - FIRST FLIGHT
ROMA - MILANO - DAKAR - RIO DE JANEIRO
SAN PAOLO - BUENOS AIRES
16. 6. 1961

DC - 8 Jet

STAMPE
RACCOMANDATA



CARLO CERUTTI
Poste Restante
DAKAR

ALITALIA

STAMPE
RACCOMANDATA

ROMA A.D.
000014
ACCETTAZ. RACC. TE

PRIMO VOLO - FIRST FLIGHT
ROMA - MILANO - DAKAR - RIO DE JANEIRO
SAN PAOLO - BUENOS AIRES

16. 6. 1961

DC - 8 Jet



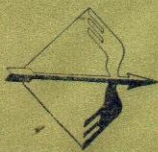
RETOUR
à l'ENVOYEUR



CARLO CERUTTI
Poste Restante
DAKAR

ALITALIA

STAMPE
RACCOMANDATA



FIRST FLIGHT 16. 6. 1961
ROMA - BUENOS AIRES
VIA MILANO

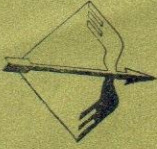


MILANO FERR.
R000208
(CORRISP.)



CARLO CERUTTI
Poste Restante
DAKAR

ALITALIA



FIRST FLIGHT 16. 6. 1961
ROMA - BUENOS AIRES
VIA MILANO

STAMPE
RACCOMANDATA

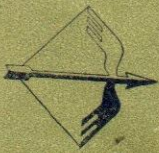


MILANO FERR.
R000213
(CORRISP.)



CARLO CERUTTI
Poste Restante
DAKAR

ALITALIA



FIRST FLIGHT 16. 6. 1961
ROMA - BUENOS AIRES
VIA MILANO

STAMPE
RACCOMANDATA



MILANO FERR.
R000234
(CORRISP.)



CARLO CERUTTI
Poste Restante
RIO DE JANEIRO

ALITALIA

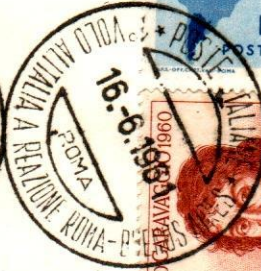
STAMPE
RACCOMANDATA

ROMA A.D.
000060 #
ACCETTAZ. RACC. TE

PRIMO VOLO - FIRST FLIGHT
ROMA - MILANO - DAKAR - RIO DE JANEIRO
SAN PAOLO - BUENOS AIRES

16. 6. 1961

DC - 8 Jet



CARLO CERUTTI
Poste Restante
RIO DE JANEIRO

ALITALIA

STAMPE
RACCOMANDATA

ROMA A.D.
000050 #
ACCETTAZ. RACC. TE

PRIMO VOLO - FIRST FLIGHT
ROMA - MILANO - DAKAR - RIO DE JANEIRO
SAN PAOLO - BUENOS AIRES

16. 6. 1961

DC - 8 Jet



CARLO CERUTTI
Poste Restante
RIO DE JANEIRO

DEVOLVENDA

ALITALIA

DCT - PR - 1a SECCAO
Buenos Aires

FIRST FLIGHT 16. 6. 1961
ROMA - BUENOS AIRES
VIA MILANO

STAMPE
RACCOMANDATA



MILANO FERR.
R000262
(CORRISP.)



20/6
Italia
San Paolo

CARLO CERUTTI
Poste Resante
~~CARACAS~~

ALITALIA

DCT - PR - 1a SECCAO
Buenos Aires

FIRST FLIGHT 16. 6. 1961
ROMA - BUENOS AIRES
VIA MILANO

STAMPE
RACCOMANDATA



MILANO FERR.
R000278
(CORRISP.)



20/6
Italia

CARLO CERUTTI
Poste Resante
~~CARACAS~~
SAN PAOLO

AL MITTENTE
NON CHIESTA



SAS Philatelic Club
Poste Restante
MILANO
Italien

AL MITTENTE
NON CHIESTA



SAS Philatelic Club
Poste Restante
MILANO
Italien

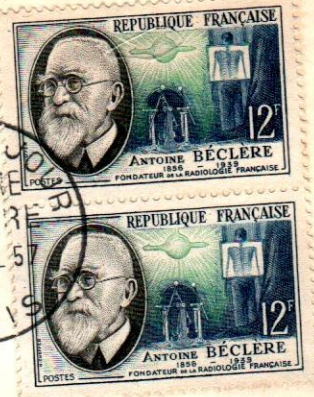
PARIS NAPOLI

1^{er} service
1^{re} LIAISON AÉRIENNE
PARIS - MILAN - NAPLES
par ALITALIA
14 AVRIL 1957

PAR
AVION

PREMIER JOUR
ANTOINE
BECLERE
13 AVRIL 57
PARIS

PREMIER JOUR
ANTOINE
BECLERE
13 AVRIL 57
PARIS



Mr. J. ROUSSEAU
Poste restante
NAPOLI Italie

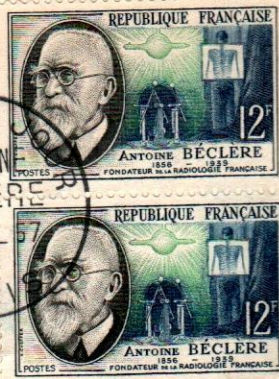
PARIS NAPOLI

1^{er} service
1^{re} LIAISON AÉRIENNE
PARIS - MILAN - NAPLES
par ALITALIA
14 AVRIL 1957

PAR
AVION

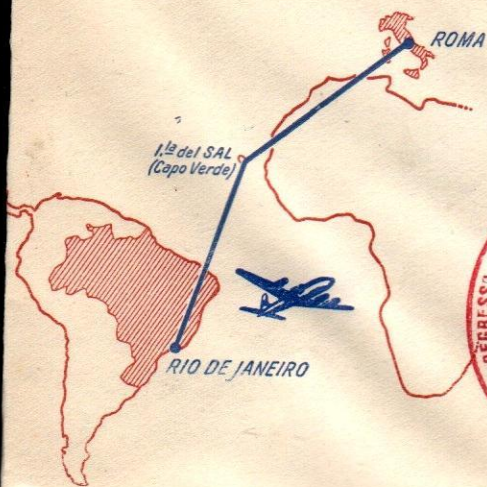
PREMIER JOUR
ANTOINE
BECLERE
13 AVRIL 57
PARIS

PREMIER JOUR
ANTOINE
BECLERE
13 AVRIL 57
PARIS

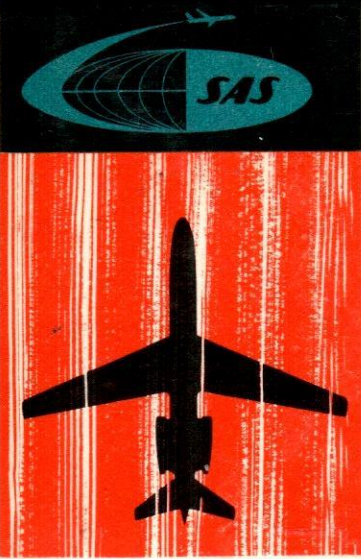


Mr. J. ROUSSEAU
Poste restante
NAPOLI Italie

VOLO DI RITORNO
 DEL PRESIDENTE GRONCHI
 AL BRASILE
 4 SETTEMBRE 1958



FILATELIA PAGNONCELLI
 "GALLERIA ESEDRA",
 R O M A (ITALIA)



SDSTO 370



SAS Philatelic Club
 Poste Restante
 ROME
 Italy

FIRST SAS CARAVELLE JET FLIGHT



OLE OLSOCS



SAS Philatelic Club
Poste Restante
ROME
Italy

FIRST **SAS** CARAVELLE JET FLIGHT



OLE OLSOCS



PHILATELIC CLUB - ITALY
86, Via Barberini

ROMA

FIRST **SAS** CARAVELLE JET FLIGHT



SDSTO 370



SAS
PHILATELIC CLUB - ITALY
86, Via Barberini
ROMA

FIRST **SAS** CARAVELLE JET FLIGHT



SDSTO 370



SAS
PHILATELIC CLUB - ITALY
86, Via Barberini
ROMA

FIRST **SAS** CARAVELLE JET FLIGHT



SDSTO 370



SAS
PHILATELIC CLUB - ITALY
86, Via Barberini

ROMA

FIRST **SAS** CARAVELLE JET FLIGHT



SDSTO 370

OSLO - ROMA 17. JULI 1959



SAS Filatelistklubb
Poste restante
ROMA

FIRST **SAS** CARAVELLE JET FLIGHT

04E OLSOS



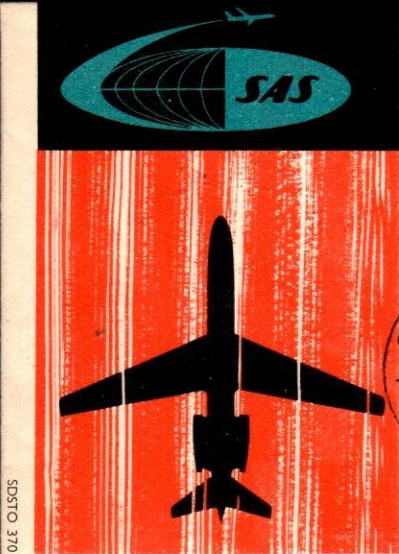
OSLO - ROMA 17. JULI 1959



SAS Philatelic Club
Poste Restante
ROME
Italy

FIRST **SAS** CARAVELLE JET FLIGHT

04E OLSOS



SAS
PHILATELIC CLUB - ITALY
86, Via Barberini
ROMA

FIRST **SAS** CARAVELLE JET FLIGHT



SDSTO 370



SAS

PHILATELIC CLUB - ITALY
86, Via Barberini

ROMA

FIRST **SAS** CARAVELLE JET FLIGHT



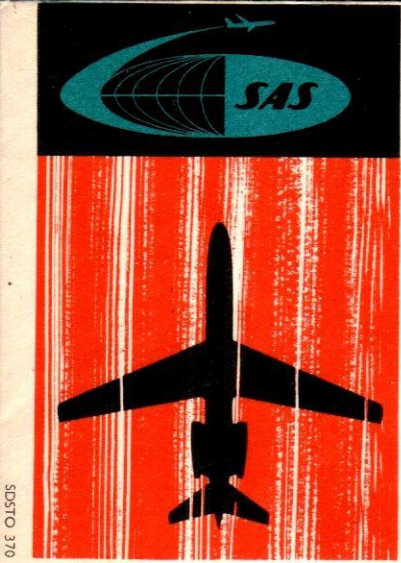
SDSTO 370

COPENHAGEN - ROME



SAS Philatelic Club
Poste Restante
ROME

FIRST **SAS** CARAVELLE JET FLIGHT



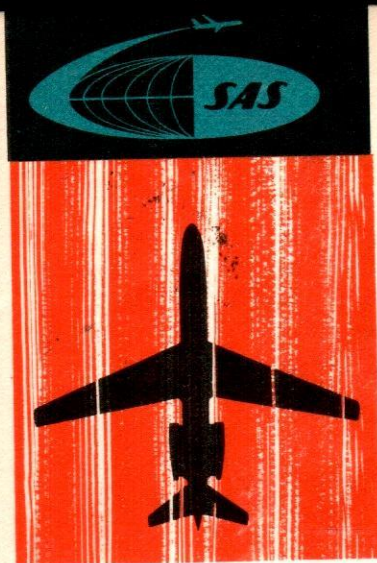
OLE OLSEN

COPENHAGEN - ROME



SAS Philatelic Club
Poste Restante
ROME

FIRST **SAS** CARAVELLE JET FLIGHT



OLE OLSEN

COPENHAGEN - ROME



SAS Philatelic Club
Poste Restante
ROME
Italy

FIRST **SAS** CARAVELLE JET FLIGHT



COPENHAGEN - ROME

SDSTO 370



SAS Philatelic Club
Poste Restante
ROME
Italy

FIRST **SAS** CARAVELLE JET FLIGHT



COPENHAGEN - ROME

SDSTO 370



SAS PHILATELIC CLUB
POSTE RESTANTE
ROME

FIRST **SAS** CARAVELLE JET FLIGHT



SDSTO 370



SAS

PHILATELIC CLUB - ITALY
86, Via Barberini

ROMA

FIRST **SAS** CARAVELLE JET FLIGHT



SDSTO 370



SAS

PHILATELIC CLUB - ITALY
86, Via Barberini

ROMA

FIRST **SAS** CARAVELLE JET FLIGHT



SDSTO 370



SAS

PHILATELIC CLUB - ITALY
86, Via Barberini

ROMA

FIRST **SAS** CARAVELLE JET FLIGHT



SDSTO 370



SAS

PHILATELIC CLUB - ITALY
86, Via Barberini

ROMA

FIRST **SAS** CARAVELLE JET FLIGHT



SDSTO 370



SAS

PHILATELIC CLUB - ITALY
86, Via Barberini

ROMA

FIRST **SAS** CARAVELLE JET FLIGHT



18 VII 59. 14



SDSTO 370



SAS

PHILATELIC CLUB - ITALY
86, Via Barberini

ROMA

FIRST **SAS** CARAVELLE JET FLIGHT





SDSTO 370



SAS

PHILATELIC CLUB - ITALY
86, Via Barberini

ROMA

FIRST **SAS** CARAVELLE JET FLIGHT



SDSTO 370



SAS

PHILATELIC CLUB - ITALY
86, Via Barberini

ROMA

FIRST **SAS** CARAVELLE JET FLIGHT



SDS TO 370



SAS

PHILATELIC CLUB - ITALY
86, Via Barberini

ROMA

FIRST **SAS** CARAVELLE JET FLIGHT



SDS TO 370



SAS

PHILATELIC CLUB - ITALY
86, Via Barberini

ROMA

FIRST **SAS** CARAVELLE JET FLIGHT



SOSTO 370

OSLO-MILANO 12. AUGUST 1959



SAS Filatelistklubb
Postrestante
MILANO

A' L'ENVOYEUR

FIRST **SAS** CARAVELLE JET FLIGHT



SOSTO 370

OSLO-MILANO 12. AUGUST 1959



SAS Filatelistklubb
Postrestante
MILANO

A' L'ENVOYEUR

FIRST **SAS** CARAVELLE JET FLIGHT



SDSTO 370

OSLO—MILANO 12. AUGUST 1959

A' L'ENVOYEUR



SAS Filatelistklubb
Poste restante
MILANO



FIRST SAS CARAVELLE JET FLIGHT



SDSTO 370

OSLO—MILANO 12. AUGUST 1959

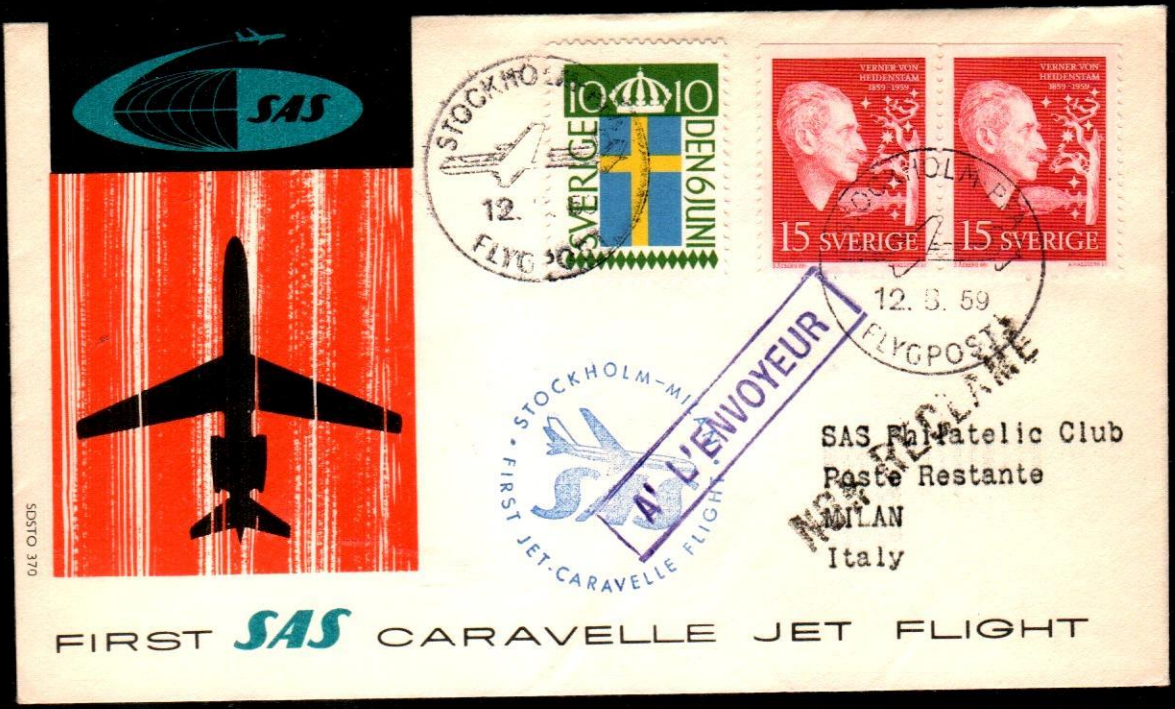
A' L'ENVOYEUR



SAS Filatelistklubb
Poste restante
MILANO



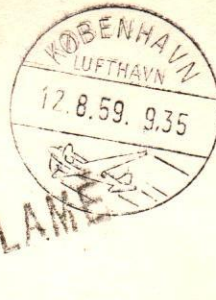
FIRST SAS CARAVELLE JET FLIGHT





SDSTO 370

COPENHAGEN - MILAN



NON RECLAME

NON RECLAME

SAS Philatelic Club
Poste Restante
MILAN / ITALY

FIRST **SAS** CARAVELLE JET FLIGHT



SDSTO 370

COPENHAGEN - MILAN



SAS Philatelic Club
Poste Restante
MILAN
Italy

FIRST **SAS** CARAVELLE JET FLIGHT



SDSTO 370

COPENHAGEN - MILAN



SAS Philatelic Club
Poste Restante
MILAN / ITALY

FIRST **SAS** CARAVELLE JET FLIGHT



SDSTO 370



SAS
PHILATELIC CLUB - ITALY
86, Via Barberini

ROMA

FIRST **SAS** CARAVELLE JET FLIGHT



SD510 370



SAS

PHILATELIC CLUB - ITALY
86, Via Barberini

ROMA

FIRST **SAS** CARAVELLE JET FLIGHT



SD510 370



SAS

PHILATELIC CLUB - ITALY
86, Via Barberini

ROMA

FIRST **SAS** CARAVELLE JET FLIGHT



SOSTO 370



Via TWA Jet

FIRST FLIGHT
AIR MAIL
NEW YORK * * * PARIS * * * ROME

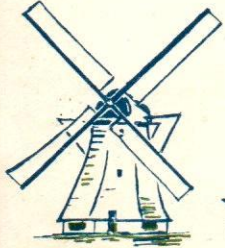
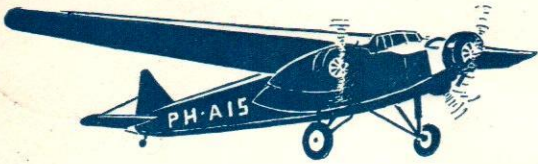
Mr. CIERRUTI Firmino
V.le del Vignola 70
R O M A

ANTEKENEN

KONINKRIJKSDAG

1954 - 15 DECEMBER - 1959

ERSTE KERSTPOST PER 'SNIP' 15 DEC. 1934



C.A.P.S.O.
P.za Rayneri, 15
TORINO 628

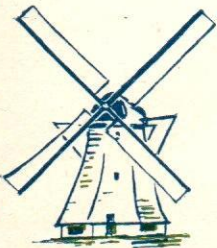
KONINKLIJKE VERENIGING OOST EN WEST

ANTEKENEN

KONINKRIJKSDAG

1954 - 15 DECEMBER - 1959

ERSTE KERSTPOST PER 'SNIP' 15 DEC. 1934



C.A.P.S.O.
P.za Rayneri, 15
TORINO 628

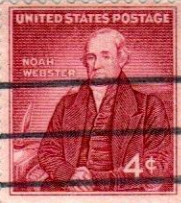
KONINKLIJKE VERENIGING OOST EN WEST

Via TWA Jet



Mr. CERRUTI Firmino
V.le del Vignola 70
R O M A

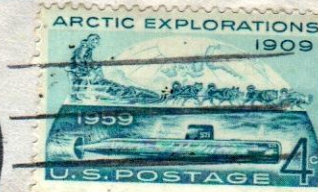
Via TWA Jet



Mr. CERRUTI Firmino
V.le del Vignola 70
R O M A

Via TWA Jet

NEW YORK (IDL) N.Y.
DEC
3
1959
530 PM
AIR MAIL FIELD PTS



Mr. CERRUTI Firmino
V.le del Vignola 70
R O M A

Via TWA Jet

NEW YORK (IDL) N.Y.
DEC
3
1959
530 PM
AIR MAIL FIELD PTS



Mr. CERRUTI Firmino
V.le del Vignola 70
R O M A

Via TWA Jet



Mr. CIERROPPI Firmino
V.le del Vignola 70
R O M A

Via TWA Jet



Mr. CIERROPPI Firmino
V.le del Vignola 70
R O M A

Via TWA Jet



Mr. CERRUTI Firmino
V.le del Vignola 70
R O M A

Via TWA Jet



Mr. CERRUTI Firmino
V.le del Vignola 70
R O M A

Via TWA Jet

NEW YORK (IDL) N. Y.
DEC
3
1959
530 PM
AIR MAIL FIELD PTS



Mr. CERRUTI Firmino
V.le del Vignola 70
R O M A

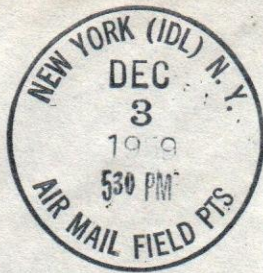
Via TWA Jet

NEW YORK (IDL) N. Y.
DEC
3
1959
530 PM
AIR MAIL FIELD PTS



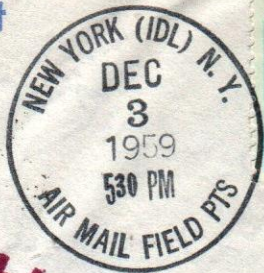
Mr. CERRUTI Firmino
V.le del Vignola 70
R O M A

Via TWA Jet



Mr. CERRUTI Firmino
V.le del Vignola 70
R O M A

Via TWA Jet



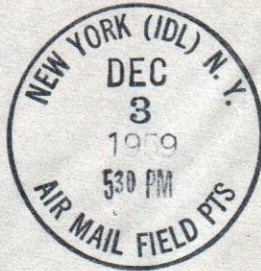
Mr. CERRUTI Firmino
V.le del Vignola 70
R O M A

Via TWA Jet



Mr. CERRUTI Firmino
V.le del Vignola 70
R O M A

Via TWA Jet



Mr. CERRUTI Firmino
V.le del Vignola 70
R O M A

Via TWA Jet



Mr. CERRUTI Firmino
V.le del Vignola 70
R O M A

Via TWA Jet



Mr. CERRUTI Firmino
V.le del Vignola 70
R O M A

Via ALITALIA
INAUGURAL FLIGHT
NEW YORK - MONTREAL
MILAN - ROME



PER VIA AEREA
PAR AVION
BY AIR MAIL

INAUGURAL FLIGHT
ALITALIA AZ 653
MONTREAL-ROME
2.3.1960
LIAISON INAUGURALE

C. A. P. S. O.
P. Rayneri, 15
TORINO - Italia

Via ALITALIA
INAUGURAL FLIGHT
NEW YORK - MONTREAL
MILAN - ROME



PER VIA AEREA
PAR AVION
BY AIR MAIL

INAUGURAL FLIGHT
ALITALIA AZ 653
MONTREAL-ROME
2.3.1960
LIAISON INAUGURALE

C. A. P. S. O.
P. Rayneri, 15
TORINO - Italia

ALITALIA



first flight

volo inaugurale



AMSTERDAM - ROME
1° th. april 1960

AMSTERDAM-MILAN-ROME



1e Alitalia-Vlucht 1 April 1960



Spett. ALITALIA
Viale Pilsudski 92
ROMA

ALITALIA



first flight

volo inaugurale



AMSTERDAM - ROME
1° th. april 1960

AMSTERDAM-MILAN-ROME



1e Alitalia-Vlucht 1 April 1960



Spett. ALITALIA
Viale Pilsudski 92
ROMA

AMSTERDAM-MILAN-ROME



1e Alitalia-Vlucht 1 April 1960



BY AIRMAIL
PAR AVION

VINCENZO PARISI
POSTE RESTANTE

ROMA

AMSTERDAM-MILAN-ROME



1e Alitalia-Vlucht 1 April 1960



BY AIRMAIL
PAR AVION

VINCENZO PARISI
POSTE RESTANTE

ROMA

AUA ERÖFFNUNGSFLUG
WIEN - VENEDIG



ERÖFFNUNGSFLUG
der
AUSTRIAN AIRLINES
Österr. Luftverkehrs A.-G.



Sig. Anton Hirsch
VENEDIG - P. restante
retour al' expéditeur



AUA ERÖFFNUNGSFLUG
WIEN - VENEDIG



ERÖFFNUNGSFLUG
der
AUSTRIAN AIRLINES
Österr. Luftverkehrs A.-G.



Sig. Etta Hirsch
Schriftstellerin
VENEDIG - P. restante
retour al' expéditeur





First
Direct Jet Flight
Los Angeles-Paris



Air France
Boeing 707 Intercontinental

LOS ANGELES
APR 5
9 30 AM
1960
CALIF.



BY AIRMAIL
PAR AVION

PT
CITIZENS SAVINGS BANK
SAN FRANCISCO
CALIF.

Vincenzo PARISI
Via Pezzotti, 19
MILANO - Italia

BY AIRMAIL
PAR AVION

AL MITTENTE

~~VINCENZO PARISI
POSTE RESTANTE
ROMA~~



50
E 1
US 4.60-17

 **ALITALIA** 



inaugural flight
volo inaugurale



PRVNI LET PRAGUE - ROME
5 th. april 1960



TISKOPIS

Spett. ALITALIA
Viale Pilsudski 92
ROMA

 **ALITALIA** 



inaugural flight
volo inaugurale



PRVNI LET PRAGUE - ROME
5 th. april 1960



TISKOPIS

Spett. ALITALIA
Viale Pilsudski 92
ROMA

ALITALIA



inaugural flight
volo inaugurale



LETADLEM
PAR AVION

PRVNI LET PRAGUE - ROME
5 th. april 1960



TISKOPIS

Spett. ALITALIA
Viale Pilsudski 92
ROMA

ALITALIA



inaugural flight
volo inaugurale



LETADLEM
PAR AVION

PRVNI LET PRAGUE - ROME
5 th. april 1960



TISKOPIS

Spett. ALITALIA
Viale Pilsudski 92
ROMA



BY AIRMAIL
PAR AVION

AL MITTENTA

VINCENZO PARISI
POSTE RESTANTE

~~ROMA~~



BY AIRMAIL
PAR AVION

AL MITTENTA

VINCENZO PARISI
POSTE RESTANTE

~~ROMA~~





LINEAS AEREAS ESCANDINAVIA
SCANDINAVIAN AIRLINES SYSTEM
DELEGACION BARCELONA

BY AIRMAIL
PAR AVION

VINCENZO PARISI
POSTE RESTANTE

Torino

~~OSLO~~



ALITALIA
Primo volo - first flight



BARAVELLE jet
MAY 23 1960



HAVE YOU
TAKEN OUT
YOUR LICENSE
FOR RADIO



ALITALIA
FIRST FLIGHT
BARAVELLE jet
LONDON - ROME
MAY 23 1960



Spett. **ALITALIA**
Viale Pilsudski 92
ROMA

ALITALIA
Primo volo - first flight



HAVE YOU
TAKEN OUT
YOUR LICEN
FOR RA...



ALITALIA
FIRST FLIGHT
CARAVELLE jet

LONDON - ROME
MAY 23 1960



Spett. **ALITALIA**
Viale Pilsudski 92
ROMA

ALITALIA
Primo volo - first flight



HAVE YOU
TAKEN OUT
YOUR LICEN
FOR RA...



ALITALIA
FIRST FLIGHT
CARAVELLE jet

LONDON - ROME
MAY 23 1960



Spett. **ALITALIA**
Viale Pilsudski 92
ROMA

ALITALIA
Primo volo - Premier liaison



CARAVELLE jet
23 · 5 · 1960



PREMIERE LIAISON
AERIEUNE
PARIS-ROME
PAR CARAVELLE ALITALIA
24 MAI 1960



Spett. ALITALIA
Viale Pilsudski 92
ROMA

ALITALIA
Primo volo - Premier liaison



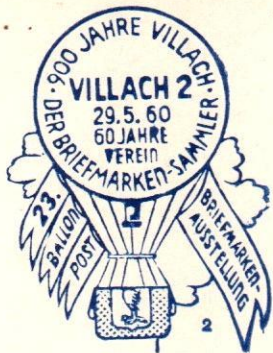
CARAVELLE jet
23 · 5 · 1960



PREMIERE LIAISON
AERIEUNE
PARIS-ROME
PAR CARAVELLE ALITALIA
24 MAI 1960



Spett. ALITALIA
Viale Pilsudski 92
ROMA



900 JAHRE VILLACH 1060 — 1960
60 JAHRE V. B. M. S. V. 1900 — 1960
23. BALLONPOSTFLUG

BIS 26. MAI 1960 IN ÖSTERREICH FRANKIERT
PER POST AUFGEBEN

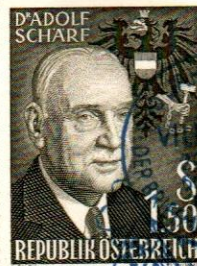
DIESE KARTE GILT ALS
AUSWEIS
ÖSTERREICHISCHEN
HALBJAHRESBE



C A P S O
Torino

Casella postale 28
Italien

MIT BALLONPOST



900 JAHRE VILLACH 1060 — 1960
60 JAHRE V. B. M. S. V. 1900 — 1960
23. BALLONPOSTFLUG

BIS 26. MAI 1960 IN ÖSTERREICH FRANKIERT
PER POST AUFGEBEN

DIESE KARTE GILT ALS
AUSWEIS
ÖSTERREICHISCHEN
HALBJAHRESBE



C A P S O
Torino

Casella postale 28
Italien

MIT BALLONPOST





LAN
30.5.60
2

900 JAHRE VILLACH 1060-1960
VILLACH 2
29.5.60
60 JAHRE
VEREIN
DER BRIEFMARKEN-SAMMLER
23. BALLONPOST
BRIEFMARKEN-AUSSTELLUNG



C A P S O
T o r i n o

Casella postale 28
Italien

900 JAHRE VILLACH 1060-1960
60 JAHRE V.B.M.S.V.

23. BALLONPOST
BIS 26. MAI 1960 AUF
DIESER BALLONPOSTBRIEF GIL
MITGLIEDER-AUSWEISEN
ÖSTERREICHISCHEN PRO-
HALBJAHRESBEITRAG

R Villach 2
186

MIT BALLONPOST



LAN
30.5.60

900 JAHRE VILLACH 1060-1960
VILLACH 2
29.5.60
60 JAHRE
VEREIN
DER BRIEFMARKEN-SAMMLER
23. BALLONPOST
BRIEFMARKEN-AUSSTELLUNG



C A P S O
T o r i n o

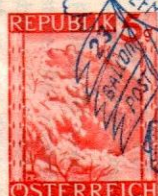
Casella postale 28
Italien

900 JAHRE VILLACH 1060-1960
60 JAHRE V.B.M.S.V.

23. BALLONPOST
BIS 26. MAI 1960 AUF
DIESER BALLONPOSTBRIEF GIL
MITGLIEDER-AUSWEISEN
ÖSTERREICHISCHEN PRO-
HALBJAHRESBEITRAG

R Villach 2
159

MIT BALLONPOST



PO., gen. mit B. M. Zl. 43.218-4/1951 vom 29. Aug. 1951

900 JAHRE VILLACH 1060-1960
60 JAHRE V.B.M.S.V. 1900-
23. BALLONPOST
BIS 26. MAI 1960 AUFGEBE
DIESER BALLONPOSTBRIEF GILT ALS
MITGLIEDER-AUSWEIS DER
ÖSTERREICHISCHEN PRODUKTION
HALBJAHRESBETRAG S. 10.

R Villach 2
147

CAPSO
Torino

Casella postale 28
Italien

MIT BALLONPOST

Unmittelbarer Wertzeichenaufdruck gem. § 17, Abs. 1



PO., gen. mit B. M. Zl. 43.218-4/1951 vom 29. Aug. 1951

900 JAHRE VILLACH 1060-1960
60 JAHRE V.B.M.S.V. 1900-
23. BALLONPOST
BIS 26. MAI 1960 AUFGEBE
DIESER BALLONPOSTBRIEF GILT ALS
MITGLIEDER-AUSWEIS DER
ÖSTERREICHISCHEN PRODUKTION
HALBJAHRESBETRAG S. 10.

R Villach 2
127

Herrn
Carlo Cerutti
Agente Filatelico
Milano

Via Podgora 15
Italien

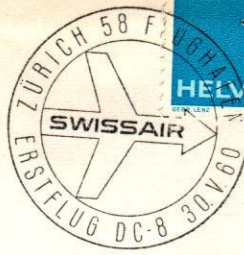
MIT BALLONPOST

23A

BY AIR MAIL



FIRST SWISSAIR DC-8 JET FLIGHT
ZURICH - GENEVA - NEW YORK



Signor
C. Cerutti
Via Podgora 15

Milano

Italia

BY AIR MAIL



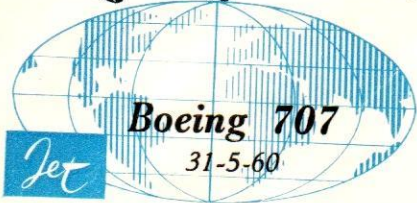
FIRST SWISSAIR DC-8 JET FLIGHT
ZURICH - GENEVA - NEW YORK



Signor
C. Cerutti
Via Podgora 15

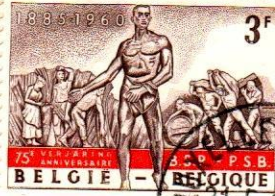
Milano

Italia



BRUXELLES } MILANO
BRUSSEL }

1^{re} Liaison par avion à réaction
1^{ste} Verbinding met straalvliegtuig



EERSTE VERBINDING
PER STRAALVLIETUIG

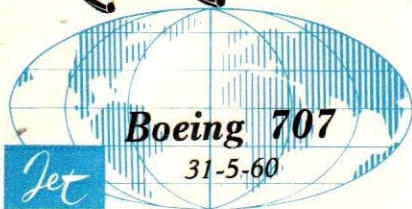


BRUXELLES
BRUSSEL
31-5-1960
MILAN
MILANO

PREMIERE LIAISON
PAR AVION A REACTION



CARLO CERUTTI
Via Podgora, 15
(ITALY) MILANO



BRUXELLES } MILANO
BRUSSEL }

1^{re} Liaison par avion à réaction
1^{ste} Verbinding met straalvliegtuig



EERSTE VERBINDING
PER STRAALVLIETUIG



BRUXELLES
BRUSSEL
31-5-1960
MILAN
MILANO

PREMIERE LIAISON
PAR AVION A REACTION



CARLO CERUTTI
Via Podgora, 15
(ITALY) MILANO

EERSTE VERBINDING
PER STRAALVLIEGTUIG



BRUXELLES
BRUSSEL
31-5-1960
MILAN
MILAAAN

PREMIERE LIAISON
PAR AVION A REACTION

SABENA

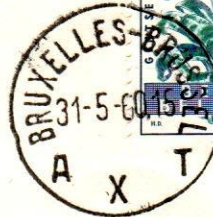
A' L'ENVOYEUR

via air mail



SABENA

BEIGIAN World AIRLINES



Mr. Nils Ekstrom
Poste Restante
MILANO

NON RECLAMARE

EERSTE VERBINDING
PER STRAALVLIEGTUIG



BRUXELLES
BRUSSEL
31-5-1960
MILAN
MILAAAN

PREMIERE LIAISON
PAR AVION A REACTION

SABENA

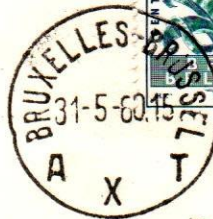
A' L'ENVOYEUR

via air mail



SABENA

BEIGIAN World AIRLINES



Mr. Nils Ekstrom
Poste Restante
MILANO

NON RECLAMARE

BOEING
Jet INTERCONTINENTAL



SABENA
BELGIAN World AIRLINES

EERSTE VERBINDING
PER STRAALVLIEGTUIG



BRUXELLES
BRUSSEL
31-5-1960
MILAN
MILAAAN

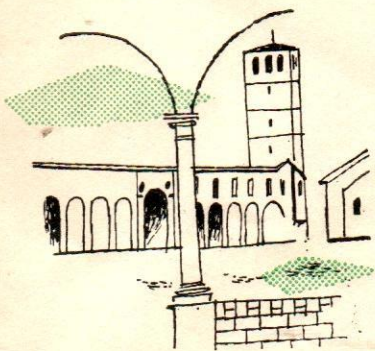
SABENA

PREMIERE LIAISON
PAR AVION A REACTION



Monsieur N. KOCHNITZKY
Directeur Général de la
SABENA pour l'Italie
31 Via Manzoni
MILAN Italie

BOEING
Jet INTERCONTINENTAL



SABENA
BELGIAN World AIRLINES

EERSTE VERBINDING
PER STRAALVLIEGTUIG



BRUXELLES
BRUSSEL
31-5-1960
MILAN
MILAAAN

SABENA

PREMIERE LIAISON
PAR AVION A REACTION



Monsieur N. KOCHNITZKY
Directeur Général de la
SABENA pour l'Italie
31 Via Manzoni
MILAN Italie

◆ **ALITALIA** ◆



NEW YORK



ROME

*Primo volo DC-8 jet first flight
june 2 1960*



Spett. **ALITALIA**
Viale Pilsudski 92
ROMA

◆ **ALITALIA** ◆

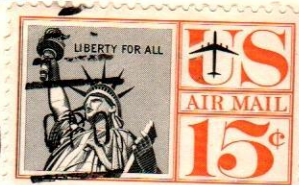


NEW YORK



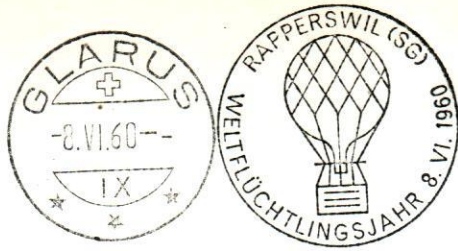
ROME

*Primo volo DC-8 jet first flight
june 2 1960*



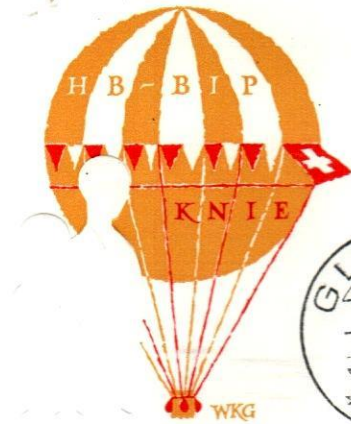
Spett. **ALITALIA**
Viale Pilsudski 92
ROMA

BALLOONPOSTFLUG UNTER DEM PATRONAT DES SCHWEIZER BUNDESPRÄSIDENTEN
ZUGUNSTEN DER FLÜCHTLINGSKINDERHILFE IM WELTFLÜCHTLINGSJAHR 1959/60



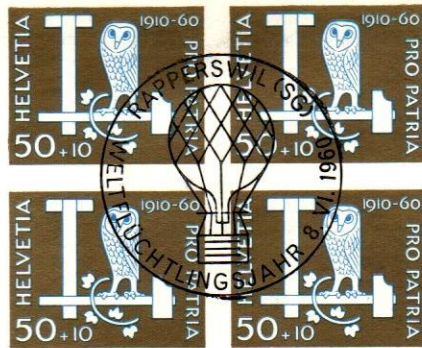
ANGELO FRATTINI
Via Frejus, 4
(ITALY) TORINO

BALLOONPOSTFLUG UNTER DEM PATRONAT DES SCHWEIZER BUNDESPRÄSIDENTEN
ZUGUNSTEN DER FLÜCHTLINGSKINDERHILFE IM WELTFLÜCHTLINGSJAHR 1959/60



1910 1960

COMITÉ SUISSE DE LA FÊTE NATIONALE
DON DU JUBILÉ



JUBILÄUMSPENDE
SCHWEIZERISCHES BUNDESFEIERKOMITEE

COMITATO SVIZZERO PER LA FESTA NAZIONALE
DONO DEL GIUBILÉO

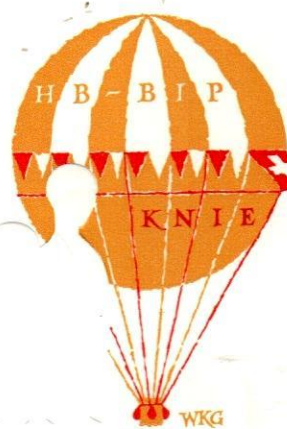
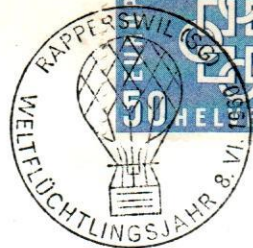
ANGELO FRATTINI
Via Frejus, 4
(ITALY) TORINO

BALLOONPOSTFLUG UNTER DEM PATRONAT DES SCHWEIZER BUNDESPRÄSIDENTEN
ZUGUNSTEN DER FLÜCHTLINGSKINDERHILFE IM WELTFLÜCHTLINGSJAHR 1959/60



ANGELO FRATTINI
Via Frejus, 4
(ITALY) TORINO

BALLOONPOSTFLUG UNTER DEM PATRONAT DES SCHWEIZER BUNDESPRÄSIDENTEN
ZUGUNSTEN DER FLÜCHTLINGSKINDERHILFE IM WELTFLÜCHTLINGSJAHR 1959/60



ANGELO FRATTINI
Via Frejus, 4
(ITALY) TORINO

BALLOONFLUG UNTER DEM PATRONAT DES SCHWEIZER BUNDESPRÄSIDENTEN
ZUGUNSTEN DER FLÜCHTLINGSKINDERHILFE IM WELTLÜCHTLINGSJAHR 1959/60



Signor
C. Cerutti
Via Podgora 15

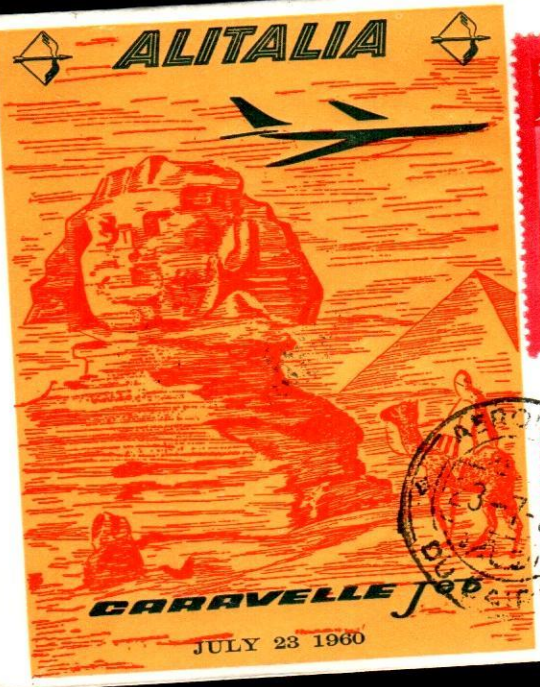
Milano
Italia

BALLOONFLUG UNTER DEM PATRONAT DES SCHWEIZER BUNDESPRÄSIDENTEN
ZUGUNSTEN DER FLÜCHTLINGSKINDERHILFE IM WELTLÜCHTLINGSJAHR 1959/60

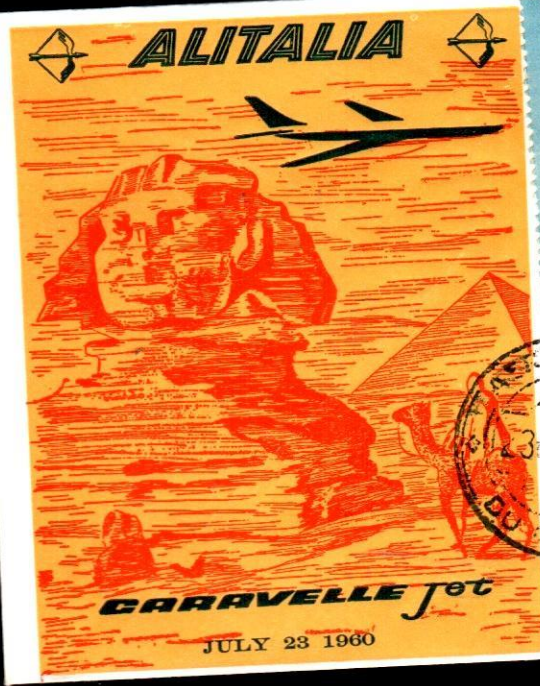


Signor
C. Cerutti
Via Podgora 15

Milano
Italia



ALITALIA
V.le Pilsudski, 92
ROMA



ALITALIA
V.le Pilsudski, 92
ROMA

ALITALIA



GARVELLE jet

JULY 23 1960

UAR الجمهورية العربية المتحدة



1960 UAR الجمهورية العربية المتحدة
السد العالي يحقق
زيادة الهامة لزراعة مليون فدان
حسبان احتياجات الري
تأمين الصرف والملاحة
وقضاء ما من الاحتياجات
تأسيس مشروعات مياه كبرى مستنقلا

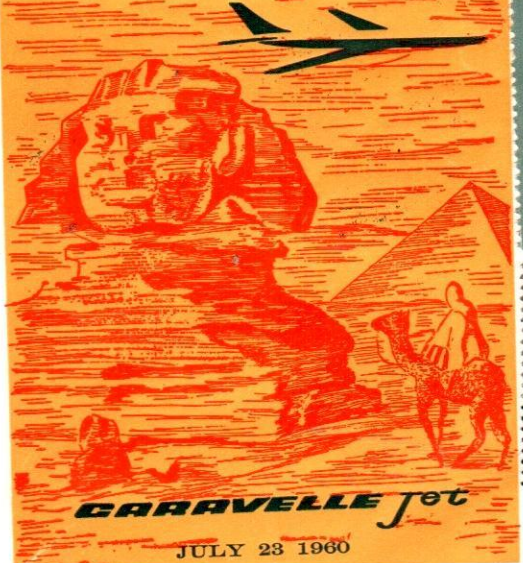
ASWAN HIGH DAM MEANS:
2 MILLION ACRES MORE OF CULTIVABLE LANDS
A STABLE IRRIGATION SYSTEM
BETTER DRAINAGE & NAVIGATION
PROTECTION AGAINST HIGH FLOODS
10 BILLION K.W.H. PER YEAR.



ASWAN HIGH DAM - 1960 1970 - السد العالي

ALITALIA
V.le Pilsudski, 92
ROMA

ALITALIA



GARVELLE jet

JULY 23 1960



1960 UAR الجمهورية العربية المتحدة
السد العالي يحقق
زيادة الهامة لزراعة مليون فدان
حسبان احتياجات الري
تأمين الصرف والملاحة
وقضاء ما من الاحتياجات
تأسيس مشروعات مياه كبرى مستنقلا

ASWAN HIGH DAM MEANS:
2 MILLION ACRES MORE OF CULTIVABLE LANDS
A STABLE IRRIGATION SYSTEM
BETTER DRAINAGE & NAVIGATION
PROTECTION AGAINST HIGH FLOODS
10 BILLION K.W.H. PER YEAR.



ASWAN HIGH DAM - 1960 1970 - السد العالي

ALITALIA
V.le Pilsudski, 92
ROMA



Ballonpostflug für die
Kinderdörfer Zürich 1960



Signor
C. Cerutti
Via Podgora 15

M i l a n o

Italia



Ballonpostflug für die
Kinderdörfer Zürich 1960



Signor
C. Cerutti
Via Podgora 15

M i l a n o

Italia

FLUGPOST
AIR MAIL
PAR AVION



OLYMPIA-SONDERFLUG
WIEN-ROM



WIEN 23.7.52
REPUBLIK OSTERREICH
OLYMPIA-SONDERFLUG
WIEN-ROM 1 AUA

C.A.P.S.O.
P.za Rayneri, 15
(ITALY) TORINO 628

FLUGPOST
AIR MAIL
PAR AVION



OLYMPIA-SONDERFLUG
WIEN-ROM



WIEN 23.7.52
REPUBLIK OSTERREICH
OLYMPIA-SONDERFLUG
WIEN-ROM 1 AUA

C.A.P.S.O.
P.za Rayneri, 15
(ITALY) TORINO 628

ROM 1960



XVII. OLYMPIADE
SONDER-LUFTPOST



MIT LH 340
TURBOPROP VISCOUNT 814
MÜNCHEN-ROM 25.8.1960

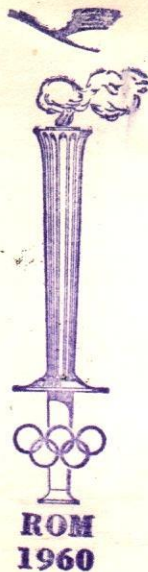
Heinz Grabowski
Poste restante
ROMA - ITALY

retour à l'expéditeur
H. Grabowski, Freudenstadt/Allemagne

via MÜNCHEN-FLUGHAFEN

**XVII. OLYMPIADE
ROM 1960**

LUFTHANSA
HAMBURG-FRANKFURT-ROM
25. 8. 1960 LH 330



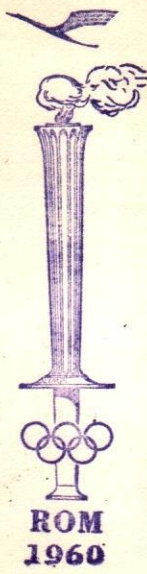
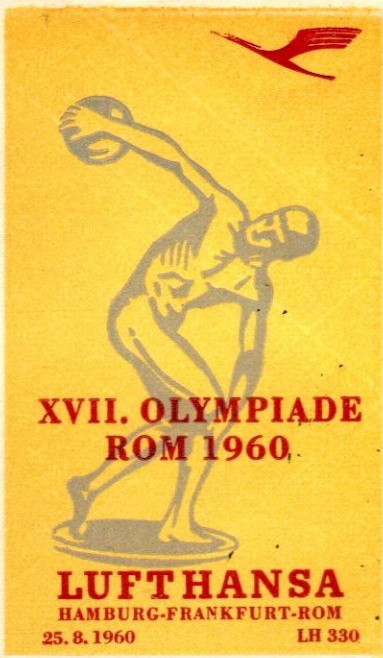
ROM
1960



Luftpost/Drucksache

Herrn
Wolfgang Winkel
Poste restante

ROMA / Italien



Luftpost/Drucksache
 Herr
 Wolfgang Winkel
 Poste restante
 ROMA / Italien

ANNO MONDIALE DEL RIFUGIATO

VOLO POSTALE SPECIALE CON PALLONE LIBERO SOTTO IL PATRONATO DEL PRESIDENTE DELLA CONFEDERAZIONE A BENEFICIO DELL'AUTO AI BAMBINI DEI RIFUGIATI



Signor
 C. Cerutti
 Via Podgora 15
 Milano
 Italia

ANNO MONDIALE DEL RIFUGIATO

VOLO POSTALE SPECIALE CON PALLONE LIBERO SOTTO IL PATRONATO DEL PRESIDENTE DELLA CONFEDERAZIONE A BENEFICIO DELL'AUTO AI BAMBINI DEI RIFUGIATI



Signor
C. Cerutti
Via Podgora 15
Milano
Italia



04E 0150S



SAS
SCANDINAVIAN AIRLINES SYSTEM
Lungano Acciolti, 10 - Tel. 298401

FIRST **SAS** DOUGLAS DC-8 JET FLIGHT
(CPHSA) COPENHAGEN FIRENZE *ITALY*



SDSTO 370



日本郵便 日本郵便局百年記念



皇太子殿下御成婚記念 30

SAS

SCANDINAVIAN AIRLINES SYSTEM
Lungarno Acciatoli, 10 - Tel. 298401

FIRST **SAS** DOUGLAS DC-8 JET FLIGHT
(CPHSA)
COPENHAGEN ITALY FIRENZE



SDSTO 370



皇太子殿下御成婚記念 30



皇太子殿下御成婚記念 30

SAS

SCANDINAVIAN AIRLINES SYSTEM
Lungarno Acciatoli, 10 - Tel. 298401

FIRST **SAS** DOUGLAS DC-8 JET FLIGHT
(CPHSA)
ITALY COPENHAGEN FIRENZE

MIT FLUGPOST
PAR AVION



Nr. 1
AUSTRIAN AIRLINES
ERÖFFNUNGSFLUG
WIEN-MILANO
WIEN 101 - 1.11.1960

Herrn
Francesco Braun
VIA STROZZI 6
FIRENZE 214
Italien

AUA

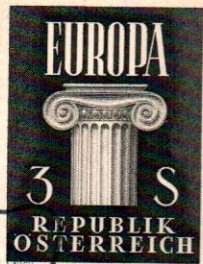
A U S T R I A N A I R L I N E S
Wien Milano



AUSTRIAN AIRLINES
ERÖFFNUNGSFLUG
WIEN-MILANO



AUA
AUSTRIAN AIRLINES
ERÖFFNUNGSFLUG
WIEN-MILANO
WIEN 101 - 1.11.1960



FLUGPOST
AIR MAIL
PAR AVION

R Wien 101
334 s

C.A.P.S.O.
P.za Rayneri, 15
TORINO 628



FLUGPOST
AIR MAIL
PAR AVION

R Wien 101
331 s

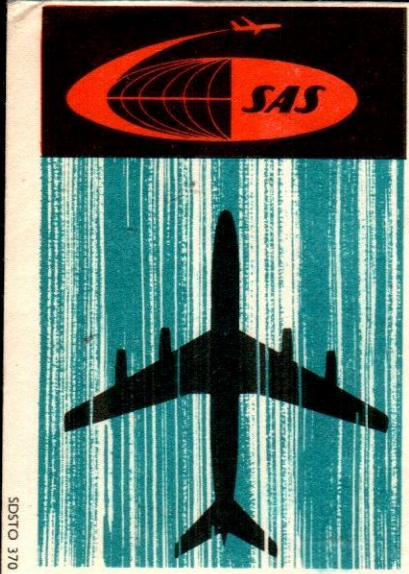
AUSTRIAN AIRLINES
ERÖFFNUNGSFLUG
WIEN-MILANO

AUA
REPUBLIK OESTERREICH

C. A. P. S. O.
P. za Rayneri, 15
TORINO 628

EUROPA
3 S
REPUBLIK OESTERREICH

REPUBLIK OESTERREICH
9



FIRST **SAS** DOUGLAS DC-8 JET FLIGHT

KØBENHAVN
LUFTHAVN
-411.60. 9.05

SAS

FIRST JET FLIGHT

KØBENHAVN
LUFTHAVN
-411.60.

EUROPA
CEPT
60 DANMARK

Mr. N. Ekström
Poste Restante
ROM
Italien

0.6 0.15 370



FIRST JET FLIGHT



OLE OLSEN 370

Mr. N. Ekström
Poste Restante
ROM
Italien

FIRST **SAS** DOUGLAS DC-8 JET FLIGHT



OLE OLSEN 370


COPENHAGEN
ROME

SAS Philatelic Club
Poste Restante
Rom/Italy

FIRST **SAS** DOUGLAS DC-8 JET FLIGHT



DAE OLSCS

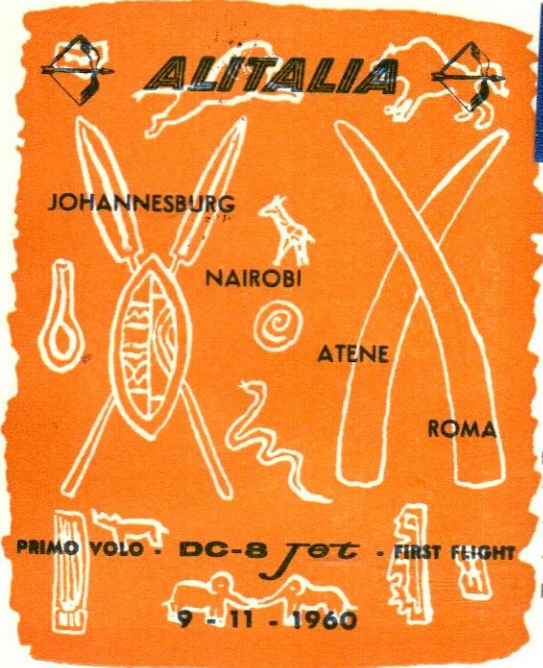



COPENHAGEN
ROME



SAS Philatelic Club
Poste Restante
Rom/Italy

FIRST **SAS** DOUGLAS DC-8 JET FLIGHT



Printed Papers



ALITALIA
Viale Pilsudski 92
ROMA



EGLIN AIR FORCE BASE
MAY 18
3 PM
1961
LA.



"RESEARCH IN AEROSPACE"
Air Proving Ground Center
Eglin AFB Florida
Type Circas
Date MAY 18 1961
"Today's Research - Tomorrow's Security"

FILATELA VITTORIA
VIA PODGORA, 15
MILANO (ITALY)

ALITALIA



CARACAS - MILANO - ROMA, 25 - 5 - 1961



AEROPUERTO DE MAIQUETIA
DPTO. FARGAS - D. F.

ALITALIA
Viale Pilsudski, 92
ROMA

 **ALITALIA** 



CARACAS - MILANO - ROMA, 25 - 5 - 1961



ALITALIA
Viale Pilsudski, 92
R O M A

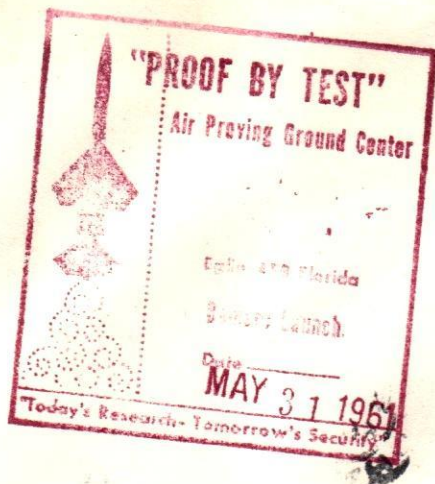
 **ALITALIA** 



CARACAS - MILANO - ROMA, 25 - 5 - 1961



ALITALIA
Viale Pilsudski, 92
R O M A



FILATEL A VITTORIA
VIA PODGORA, 15
MILANO (ITALY)

ALITALIA



BUENOS AIRES - MONTEVIDEO - SAN PAOLO
RIO DE JANEIRO - DAKAR - MILANO - ROMA
17 - 6 - 1961



17 JUNIO 1961 - VUELO
BUENOS AIRES - ROMA

ALITALIA
Viale Pilsudski, 92
ROMA

 **ALITALIA** 



BUENOS AIRES - MONTEVIDEO - SAN PAOLO
RIO DE JANEIRO - DAKAR - MILANO - ROMA
17 GIUGNO 1961



ALITALIA
Viale Pilsudski, 92
ROMA

VIA AEREA



FILATELIA VITTORIA
Via Podgora, 15
(ITALY) **MILANO**



50 Jahre Schweizerischer Blindenverband
Ballonpostflug zugunsten blinder Kinder und Jugendlicher



Filatelia Vittoria
Via Podgora 15

M i l a n o
Italia



50 Jahre Schweizerischer Blindenverband
Ballonpostflug zugunsten blinder Kinder und Jugendlicher



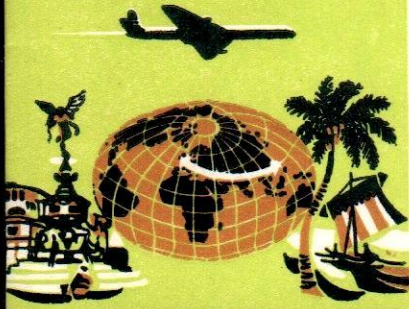
Filatelia Vittoria
Via Podgora 15

M i l a n o
Italia



BY AIR MAIL
PAR AVION

BOAC COMET 4 JETLINER



B.O.A.C.



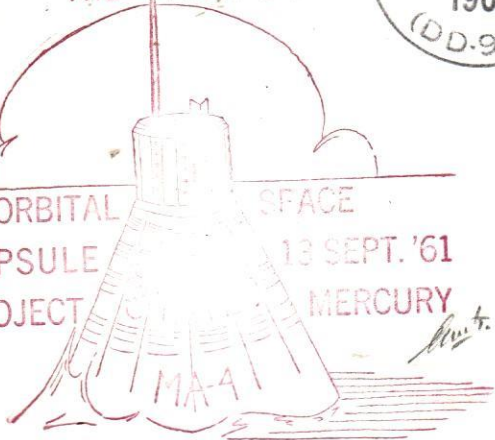
FIRST FLIGHT BETWEEN
LONDON AND MANILA



B.O.A.C. District Sales Manager,
Via Bissolati 54,
ROME,
Italy.

THE
USS DECATUR
~ (DD936) ~
RECOVERS
FIRST U. S.

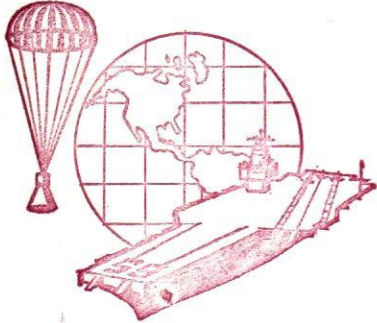
ORBITAL SPACE
CAPSULE PROJECT
13 SEPT. '61
MERCURY



\$30

CARLO CERUTTI
Via Podgora, 15
(ITALY) MILANO

U.S. NAVY
Project Mercury
Recovery Force



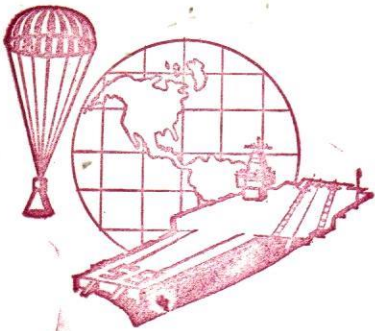
U.S.S. ENTERPRISE
CVA(N)65



ASTRONAUT COL GLENN
PICKED UP AT 305 PM
BY USS NOA DD-841

FILATELIA VITTORIA
VIA PODGORA, 15
MILANO (ITALY)

U.S. NAVY
Project Mercury
Recovery Force



U.S.S. ENTERPRISE
CVA(N)65



ASTRONAUT COL GLENN
PICKED UP AT 305 PM
BY USS NOA DD-841

FILATELIA VITTORIA
VIA PODGORA, 15
MILANO (ITALY)

U.S. NAVY
Project Mercury
Recovery Force



USS
FEB
20
3 PM
1962
ENTERPRISE (CVA(N)65)



ASTRONAUT COL. GLENN
PICKED UP AT 305 PM
BY USS NOA DD-341

U.S.S. ENTERPRISE
CVA(N)65

FILATELIA VITTORIA
VIA PODGORA, 15
MILANO (ITALY)



Vol postal par Ballon libre



PRO JUVENTUTE

Signor
Antonio Galli
Via Pio IX-27

Desio Milano

Italia



Vol postal par Ballon libre



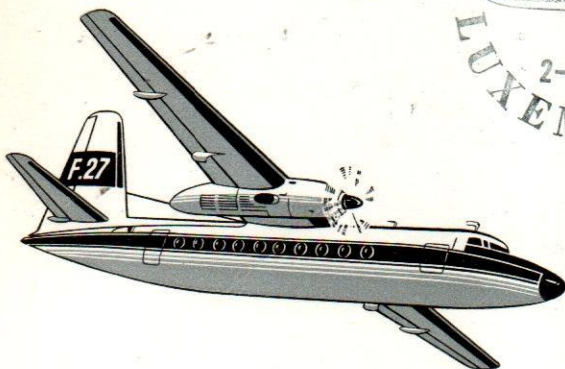
PRO JUVENTUTE

Signor
Antonio Galli
Via Pio IX-27

Desio Milano

Italia

VOL INAUGURAL
LUXEMBOURG-MILAN



PAR AVION

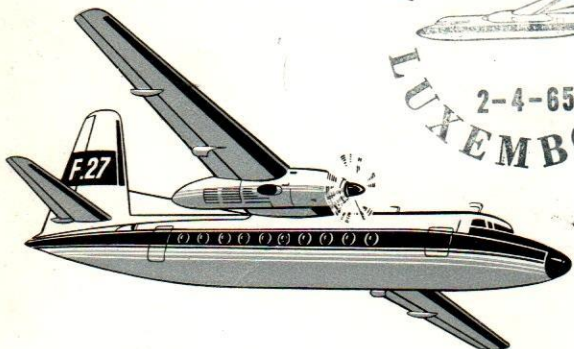
Filatelia Vittoria
15, Via Podgora
Milano

Italia

Fédération des Sociétés Philatéliques du Grand-Duché de Luxembourg N° 00628

E 63 g

VOL INAUGURAL
LUXEMBOURG-MILANO



PAR AVION

Filatelia Vittoria
15, Via Podgora
Milano

Italie

Fédération des Sociétés Philatéliques du Grand-Duché de Luxembourg N° 00626



AIR MAIL POSTAL CARD



FILATELIA VITTORIA
Piazza Cordusio, 2
(ITALY) MILANO



AIR MAIL POSTAL CARD



FILATELIA VITTORIA
Piazza Cordusio, 2
(ITALY) MILANO

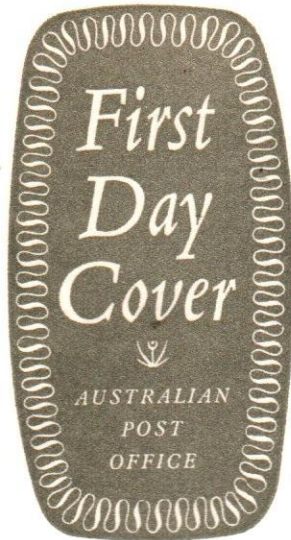


Filatelìa Vittoria
Piazza Cordusio 2
MILAN
ITALY





Filatelia Vittoria
Piazza Cordusio 2
MILAN
ITALY



Filatelia Vittoria
Piazza Cordusio 2
MILAN
ITALY





Filatelia Vittoria,
Piazza Cordusio 2,
Milano,
ITALY.



Filatelia Vittoria,
Piazza Cordusio 2,
Milano,
ITALY.





Filatelia Vittoria,
Piazza Cordusio 2,
Milano,
ITALY.



Filatelia Vittoria,
Piazza Cordusio 2,
Milano,
ITALY.



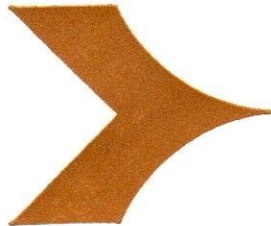
ERSTFLUG WIEN—MAILAND MIT DC-9
DER AUSTRIAN AIRLINES



Erstflug
mit DC-9

Wien—Mailand
30. 8. 1971

AUSTRIAN AIRLINES
1
50 S
Wien
REPUBLIK ÖSTERREICH



 **Douglas DC-9**

246

Herrn Adolf Kosel
poste restante
Milano

ALITALIA

ROMA A.D.

000025

ACCETTAZ. RACC. TE

DCT-PR-4a SECCAO

AU RETOUR

ST. PAUL - BRÉSIL



STAMPE
RACCOMANDATA

Italia

CARLO CERUTTI

Poste Restante

S. PAULO

(BRASILE)

ALITALIA

ROMA A.D.

000031

ACCETTAZ. RACC. TE

ST. PAUL - BRÉSIL

AU RETOUR

DCT-PR-4a SECCAO



STAMPE
RACCOMANDATA

Italia

CARLO CERUTTI

Poste Restante

S. PAULO

(BRASILE)

ALITALIA



FIRST FLIGHT 16. 6. 1961
ROMA - BUENOS AIRES
VIA MILANO

STAMPE
RACCOMANDATA



MILANO FERR.
R000252
(CORRISP.)

POSTE ITALIANE L.60



CARLO CERUTTI
Poste Restante
BUENOS AIRES

 **ALITALIA** 

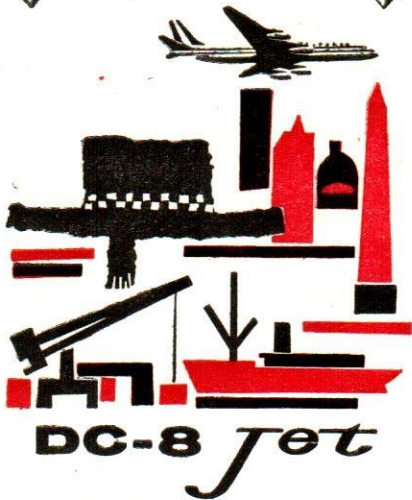


ROMA - MILANO - DAKAR - RIO DE JANEIRO
SAN PAOLO - BUENOS AIRES
16 GIUGNO 1961



ALITALIA
Avenida Cordoba, 315
BUENOS AIRES

 **ALITALIA** 



ROMA - MILANO - DAKAR - RIO DE JANEIRO
SAN PAOLO - BUENOS AIRES
16 GIUGNO 1961



ALITALIA
Avenida Cordoba, 315
BUENOS AIRES

ALITALIA



PRIMO VOLO - FIRST FLIGHT
ROMA - MILANO - DAKAR - RIO DE JANEIRO
SAN PAOLO - BUENOS AIRES

16. 6. 1961

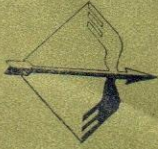
DC - 8 Jet

STAMPE
RACCOMANDATA



FILATELIA VITTORIA
VIA PODGORA, 15
MILANO (ITALY)

ALITALIA



FIRST FLIGHT 16. 6. 1961
ROMA - BUENOS AIRES
VIA MILANO

STAMPE
RACCOMANDATA



MILANO FERR.
R000237
(CORRISP.)

9

Stati's

*Av Rte
Stati's*

CARLO CERUTTI
Poste Restante
RIO DE JANEIRO

BY AIR MAIL
PAR AVION

BOAC COMET 4 JETLINER



B.O.A.C.

FIRST FLIGHT BETWEEN
LONDON AND MANILA



Manager,
Messrs. Warner Barnes & Co. Ltd.
109-115, Juan Luna,
MANILA,
Philippines.

VOLO INAUGURALE
B. O. A. C.
ROMA - MANILA



ROMA A.D.
N. 000347
ACCETTAZ. RACC. TE



VIA AEREA

FILATELIA VITTORIA 32
Posta Restante
SINGAPORE

STAMPE



ROMA A.D.
N. 000349
ACCETTAZ. RACC. TE



VIA AEREA

FILATELIA VITTORIA
Posta Restante
SINGAPORE

STAMP 54



ROMA A.D.
000338
ACGETTAZ. RACC. TE

4-4 952-12
ACGETT. RACCOM.

VIA AEREA

FILATELIA VITTORIA 55
Posta Restante
SINGAPORE

STAMPE



ROMA A.D.
4-4 952-12
ACGETT. RACCOM.

ROMA A.D.
000358
ACGETTAZ. RACC. TE

VIA AEREA

FILATELIA VITTORIA 52
Posta Restante
SINGAPORE

STAMPE



ROMA A.D.
-4-4 962-12
(AGGETT. RACCOM.)

ROMA A.D.
N° 000346
AGGETT. RACCOM.

EUROPA L.30
POSTE ITALIANE

EUROPA L.70
POSTE ITALIANE

10 LIRE
POSTE ITALIANE

1861 CENTENARIO UNITA D'ITALIA 1961
POSTE ITALIANE LIRE 70

VIA AEREA

FILATELIA VITTORIA 34
Posta Restante
SINGAPORE

STAMPE



ROMA A.D.
N° 000305
AGGETT. RACCOM.

EUROPA L.30
POSTE ITALIANE

EUROPA L.70
POSTE ITALIANE

10 LIRE
POSTE ITALIANE

ITALIA
50 LIRE POSTA AEREA

RETURNED TO SENDER
(Received From Fgn. Country)
In Letter Branch.

ROMA A.D.
-4-4 962-12
(AGGETT. RACCOM.)

VIA AEREA

FILATELIA VITTORIA
Posta Restante
KARACHI

STAMPE

ROMA A.D.
000311
ACCEZZAZ. RAGG. TE



VIA AEREA

FILATELIA VITTORIA
Posta Restante
BANGCOK

STAMP

RETURNED TO SENDER
(Received from the Country)
In Letter Branch.

ROMA A.D.
000311
ACCEZZAZ. RAGG. TE



VIA AEREA

FILATELIA VITTORIA
Posta Restante
KARACHI

STAMP



NON. RECLAME

RECEVUR

ROMA A.D.
E 000303
ACCETTAZ. RACC. TE

ROMA A.D.
-4-4.962-12
(ACCETT. RACCOM.)



VIA AEREA

FILATELIA VITTORIA
Posta Restante

TORRAN

STAMPE

شوربا
پت ریستانت

NON. RECLAME

RECEVUR

ROMA A.D.
E 000302
ACCETTAZ. RACC. TE

ROMA A.D.
-4-4.962-12
(ACCETT. RACCOM.)



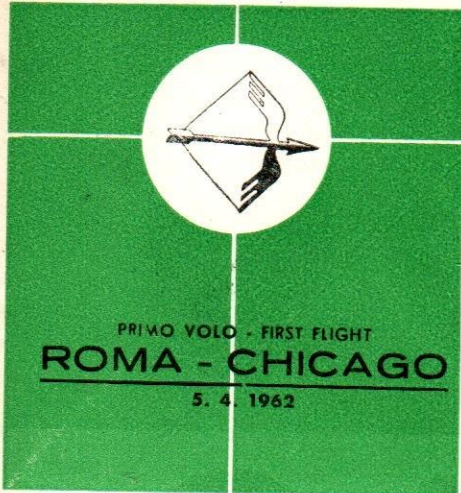
VIA AEREA

FILATELIA VITTORIA
Posta Restante

TORRAN

STAMPE

ALITALIA



PRIMO VOLO - FIRST FLIGHT
ROMA - CHICAGO
5. 4. 1962

DC - 8 jet

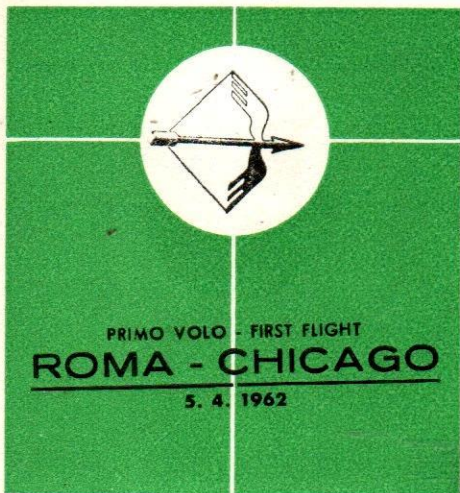


STAMPATI

R MILANO
(Ferrov. Corresp.)
6077

CARLO CERUTTI
Poste Resiante
CHICAGO USA

ALITALIA



PRIMO VOLO - FIRST FLIGHT
ROMA - CHICAGO
5. 4. 1962

DC - 8 jet



STAMPATI

R MILANO
(Ferrov. Corresp.)
6061

CARLO CERUTTI
Poste Resiante
CHICAGO USA



VIA AEREA

FILATELIA VITTORIA
Posta Restante
CHIGAGO

STAMPE



VIA AEREA

FILATELIA VITTORIA
Posta Restante
CHIGAGO

STAMPE



ROMA A.D.
N° 000097
ACCELT. RACCOM. TELE

VIA AEREA

FILATELIA VITTORIA
Posta Restante
CHIGAGO

STAMPE



ROMA A.D.
N° 000097
ACCELT. RACCOM. TELE

VIA AEREA

FILATELIA VITTORIA
Posta Restante
CHIGAGO

STAMPE



ROMA A.D.
00039
ACCETTAZ. RACCOM.

VIA AEREA

FILATELIA VITTORIA
Posta Restante
CHIGAGO

STAMPE



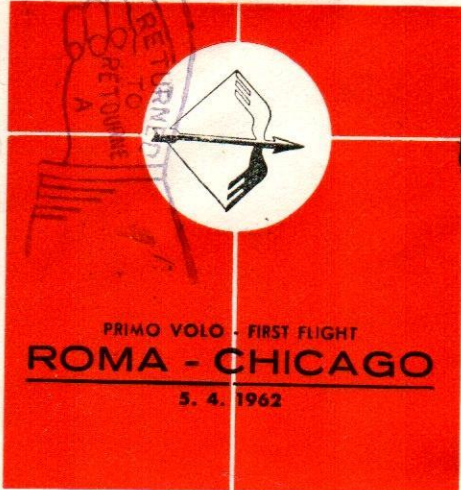
ROMA A.D.
00040
ACCETTAZ. RACCOM.

VIA AEREA

FILATELIA VITTORIA
Posta Restante
CHIGAGO

STAMPE

ALITALIA



DC - 8 jet



**STAMPATI
RACCOMANDATA**

62

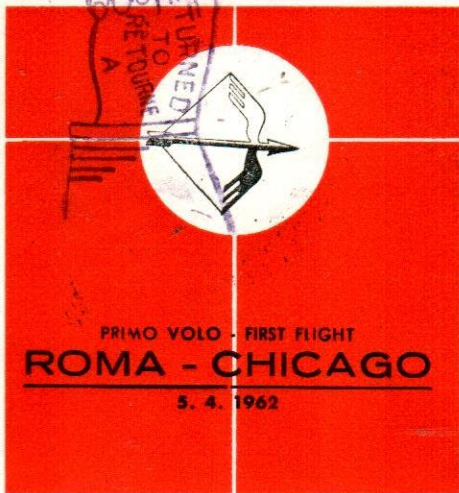
**NOT CALLED FOR
NON RÉCLAMÉ**

R MILANO
(Ferrov. Corresp.)
6045

CARLO CERUTTI
Poste Restante
MONTREAL

Canada

ALITALIA



DC - 8 jet



**STAMPATI
RACCOMANDATA**

71

**NOT CALLED FOR
NON RÉCLAMÉ**

R MILANO
(Ferrov. Corresp.)
6049

CARLO CERUTTI
Poste Restante
MONTREAL

Canada



MAA.D.
000378
ACCETTAZ. RACCOM. TE

NOT CALLED FOR
NON RECLAMÉ

VIA AEREA

FILATELIA VITTORIA
Posta Restante
MONTREAL

STAMPE



MAA.D.
000368
ACCETTAZ. RACCOM. TE

NON RICHIEDERE
PERIODICI DI FILATELIA
PRESCRITTA

VIA AEREA

FILATELIA VITTORIA
Fermo Posta
~~MILANO~~

STAMPE

ROMA



PRIMA A.D.
N° 000375
ACCETTAZ. RAGG. TE

NON RICHIEDE ENTRATA
PERIODI DI GIACENZA
PRESCRITTA

VIA AEREA

ROMA

FILATELIA VITTORIA
Fermo Posta
~~MILANO~~

STAMPE

RETOUR A L'EXPEDITEUR
TERUG AAN AFZENDER

Non réclamé
Niet aangevraagd

Refuse
Geweigerd

Adresse inexistante
of dus bestaat niet

Adresse incomplète
Ontoerullend adres

Parti sans indication d'adresse
Vertr. zonder aanduiding van adres

Localisation inconnue
Lokaal niet bekend

Divers
Overig



IO SONO LA LAMPADA CH'ARDE SOAVE



IO SONO LA LAMPADA CH'ARDE SOAVE



IO SONO LA LAMPADA CH'ARDE SOAVE



VIA AEREA

FILATELIA VITTORIA
~~Posta Restante~~
~~LEOPOLDVILLE~~

STAMPE

RETOUR A L'EXPÉDITEUR
TERUG AAN AFZENDER

Non réclamé
Niet afgehaald

Refusé
Gewierd

Adresse inexistante
Adres bestaat niet

Adresse incomplète
Ontoereikend adres

Parti sans laisser d'adresse
Vertr. zonder adr. op l.

Localité inconnue
Lokaal onbekend

Domicile inconnu
Woonplaats onbekend



VIA AEREA

FILATELIA VITTORIA
Posta Restante
LEOPOLDVILLE **STAMPE**

RETOUR A L'EXPÉDITEUR
TERUG AAN AFZENDER

Non réclamé
Niet afgehaald

Refusé
Gewierd

Adresse inexistante
Adres bestaat niet

Adresse incomplète
Ontoereikend adres

Parti sans laisser d'adresse
Vertr. zonder adr. op l.

Localité inconnue
Lokaal onbekend

Domicile inconnu
Woonplaats onbekend



VIA AEREA

FILATELIA VITTORIA
Posta Restante
LEOPOLDVILLE **STAMPE**

RETOUR A L'EXPÉDITEUR
TERUG AAN AFZENDER

Non réclamé
Niet afgehaald

Refusé
Gewiergd

Adresse inexistante
Adres bestaat niet

Adresse incomplète
Ontoereikend adres

Part sans laisser d'adresse
Vertr. zonder adres op te geven

Localité inconnue
Lokaaliteit onbekend

Droide
Overboord

Inconnu
Onbekend



VIA AEREA

FILATELIA VITTORIA

~~Posta Restante~~

~~LEOPOLDVILLE~~

STAMPE

RETOUR A L'EXPÉDITEUR
TERUG AAN AFZENDER

Non réclamé
Niet afgehaald

Refusé
Gewiergd

Adresse inexistante
Adres bestaat niet

Adresse incomplète
Ontoereikend adres

Part sans laisser d'adresse
Vertr. zonder adres op te geven

Localité inconnue
Lokaaliteit onbekend

Droide
Overboord

Inconnu
Onbekend



VIA AEREA

FILATELIA VITTORIA

~~Posta Restante~~

~~LEOPOLDVILLE~~

STAMPE

RETOUR A L'EXPEDITEUR
TERUG AAN AFZENDER

Non réçonné
Niet afgekeurd

Refusé
Gewelgerd

Adresse inexistante
Adres bestaat niet

Adresse incomplete
Ontoerikend adres

Parti sans laire d'adresse
Vartn. zonder afz. op te geven

Localité inconnue
Lokaal. it onbekend

Décédé
Overleden

Inconnu
Onbekend



VIA AEREA

FILATELIA VITTORIA
Posta Restante
LEOPOLDVILLE

STAMPE



POSTE FERR. CORR.
000056
MILANO

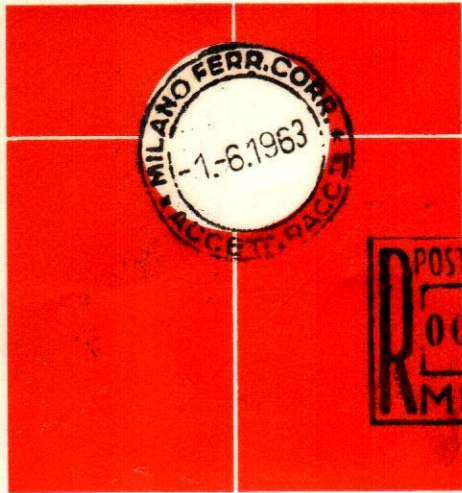


10

CARLO CERUTTI
Poste Restante
New York

STAMPE

RACCOMANDATA (U. S. A.)



19
CARLO CERUTTI
Poste Restante
New York

STAMPE RACCOMANDATA (U.S.A.)

LH 339 Aufnahme
des Liniendienstes
mit Europa Jet Boeing 727
24. Juni 1965
Mailand-Düsseldorf



Lufthansa

Luftpost - Par Avion

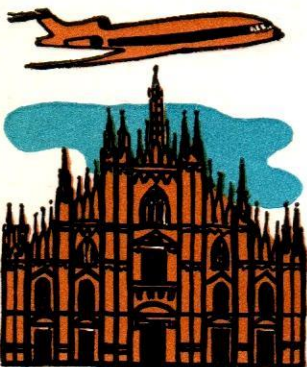


Lufthansa
LH 339
Milano - Düsseldorf
24. 6. 1965

Primo collegamento diretto senza scalo
con Europa Jet Boeing 727

Luftpost - Drucksache
Deutsche Lufthansa A. G.
Elberfelder Straße 4-6
Düsseldorf/Western Germany

LH 339 Aufnahme
des Liniendienstes
mit Europa Jet Boeing 727
24. Juni 1965
Mailand-Düsseldorf



Lufthansa

Luftpost - Par Avion



Lufthansa
LH 339
Milano - Düsseldorf
24.6.1965
Primo collegamento diretto senza scalo
con Europa Jet Boeing 727

2

Luftpost - Drucksache

Deutsche Lufthansa A. G.
Elberfelder Straße 4-6
Düsseldorf/Western Germany

LH 339 Aufnahme
des Liniendienstes
mit Europa Jet Boeing 727
24. Juni 1965
Mailand-Düsseldorf



Lufthansa

Luftpost - Par Avion



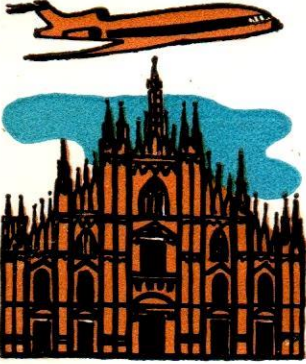
Lufthansa
LH 339
Milano - Düsseldorf
24.6.1965
Primo collegamento diretto senza scalo
con Europa Jet Boeing 727

2

Luftpost - Drucksache

Deutsche Lufthansa A. G.
Elberfelder Straße 4-6
Düsseldorf/Western Germany

LH 339 Aufnahme
des Liniendienstes
mit Europa Jet Boeing 727
24. Juni 1965
Mailand-Düsseldorf



Lufthansa

Luftpost - Par Avion



Lufthansa
LH 339
Milano - Düsseldorf
24. 6. 1965
Primo collegamento diretto senza scalo
con Europa Jet Boeing 727
2

Luftpost — Drucksache
Deutsche Lufthansa A. G.
Elberfelder Straße 4-6
Düsseldorf/Western Germany

LH 339 Aufnahme
des Liniendienstes
mit Europa Jet Boeing 727
24. Juni 1965
Mailand-Düsseldorf



Lufthansa

Luftpost - Par Avion



Lufthansa
LH 339
Milano - Düsseldorf
24. 6. 1965
Primo collegamento diretto senza scalo
con Europa Jet Boeing 727
1

Luftpost — Drucksache
Deutsche Lufthansa A. G.
Elberfelder Straße 4-6
Düsseldorf/Western Germany

LH 339 Aufnahme
des Liniendienstes
mit Europa Jet Boeing 727
24. Juni 1965
Mailand-Düsseldorf



Lufthansa

Luftpost - Par Avion




Lufthansa
LH 339
Milano - Düsseldorf
24. 6. 1965
Primo collegamento diretto senza scalo
con Europa Jet Boeing 727

Luftpost — Drucksache
Deutsche Lufthansa A. G.
Elberfelder Straße 4-6
Düsseldorf/Western Germany

LH 339 Aufnahme
des Liniendienstes
mit Europa Jet Boeing 727
24. Juni 1965
Mailand-Düsseldorf



Lufthansa

Luftpost - Par Avion




Lufthansa
LH 339
Milano - Düsseldorf
24. 6. 1965
Primo collegamento diretto senza scalo
con Europa Jet Boeing 727

Luftpost — Drucksache
Deutsche Lufthansa A. G.
Elberfelder Straße 4-6
Düsseldorf/Western Germany

PER VIA AEREA
PAR AVION

Mod. 24-R



EuropaJet
Lufthansa



Retour



Lufthansa

LH 339

Milano - Düsseldorf

24.6.1965

Primo collegamento diretto senza scalo
con Europa Jet Boeing 727

1

H. BLÜMENTHAL
4 DÜSSELDORF / FLGH.
Postlagernd

PER VIA AEREA
PAR AVION

Mod. 24-R



EuropaJet
Lufthansa



Retour



Lufthansa

LH 339

Milano - Düsseldorf

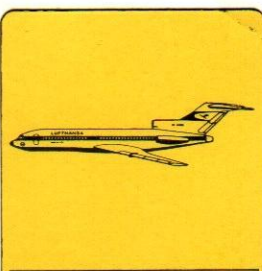
24.6.1965

Primo collegamento diretto senza scalo
con Europa Jet Boeing 727

1

H. BLÜMENTHAL
4 DÜSSELDORF / FLGH.
Postlagernd

PER VIA AEREA
PAR AVION
Mod. 24-R



EuropaJet
Lufthansa

POSTE MILANO
24.5.55
AEROPORTO LINATE



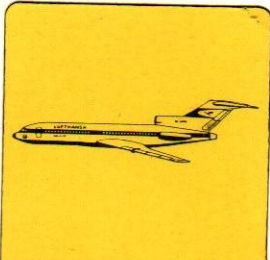
Lufthansa
LH 339
Milano - Düsseldorf
24.5.1955
Pria collegamento diretto senza scalo
con Europa Jet Boeing 727
2



24.5.55
AEROPORTO LINATE

H. BLÜMENTHAL
4 DÜSSELDORF / FLGH.
Postlagernd

PER VIA AEREA
PAR AVION
Mod. 24-R



EuropaJet
Lufthansa

POSTE MILANO
24.5.55
AEROPORTO LINATE

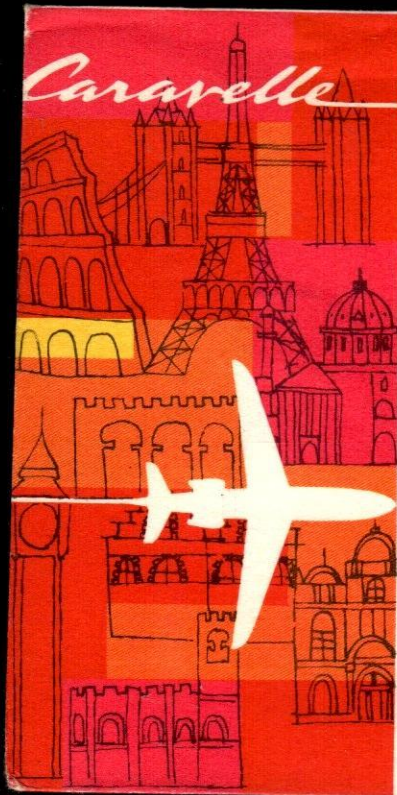


Lufthansa
LH 339
Milano - Düsseldorf
24.5.1955
Pria collegamento diretto senza scalo
con Europa Jet Boeing 727
2



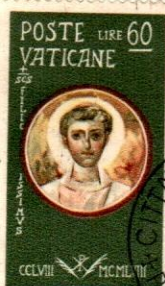
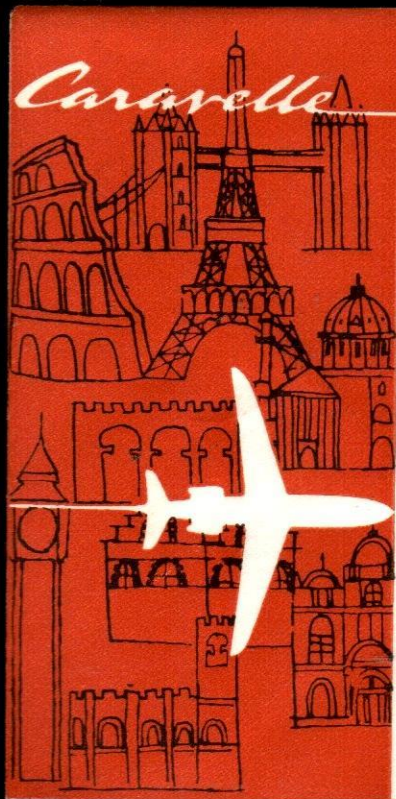
24.5.55
AEROPORTO LINATE

H. BLÜMENTHAL
4 DÜSSELDORF / FLGH.
Postlagernd



PREMIER VOL CARAVELLE
1 JUIN 1959
AIR FRANCE ROME-NICE

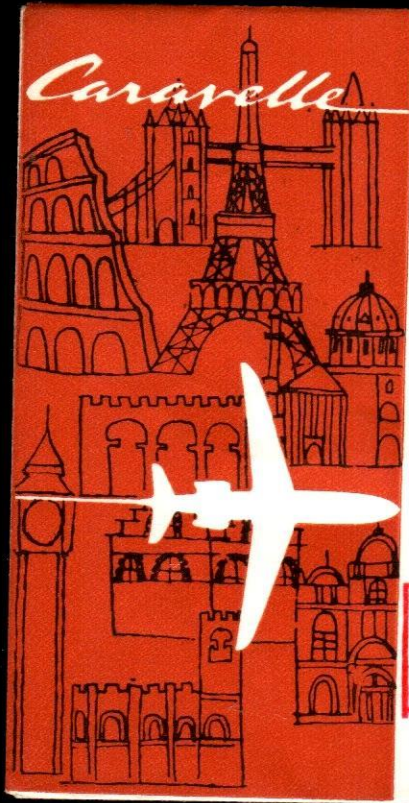
Mr. JACQUES BONNAT
AIR FRANCE
NICE (France)



PRIMO VOLO CARAVELLE
25 AGOSTO 1959
AIR FRANCE ROMA-BEYROUTH

AIR FRANCE
rue Jouvenel
BEYROUTH (Liban)





Caravelle



PRIMO VOLO CARAVELLE
 30 AGOSTO 1959
 AIR FRANCE ROMA - TEL AVIV

AIR FRANCE
 32 rue Allenby
 TEL AVIV (Israel)



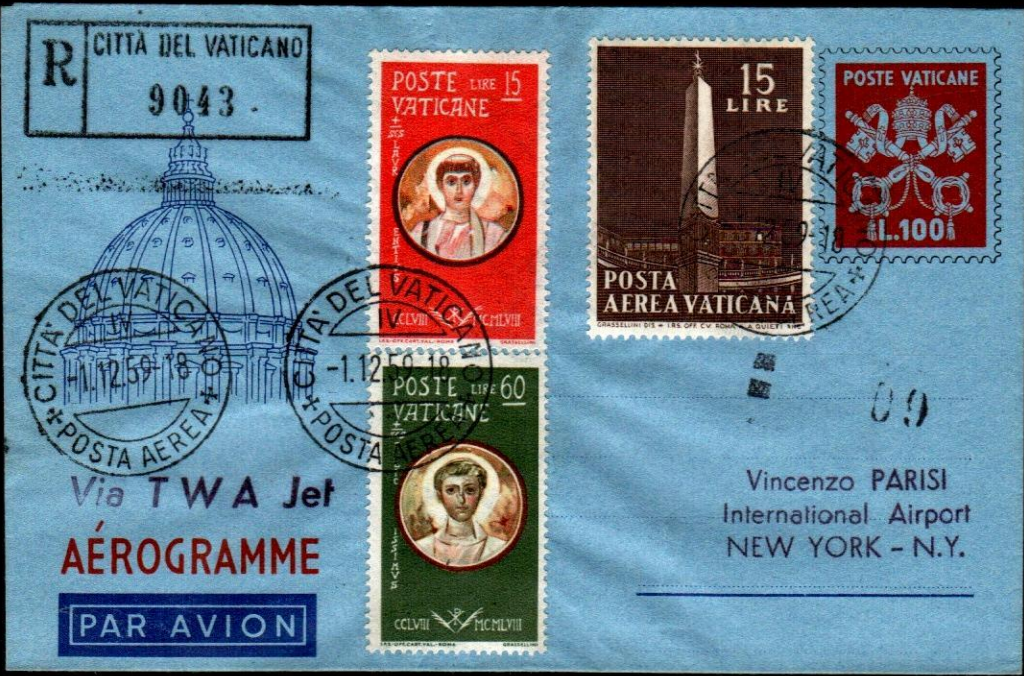
R CITTÀ DEL VATICANO
 9042



Via TWA Jet
AÉROGRAMME
 PAR AVION



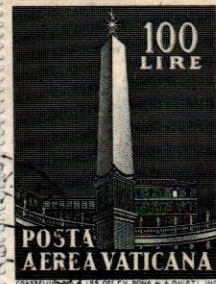
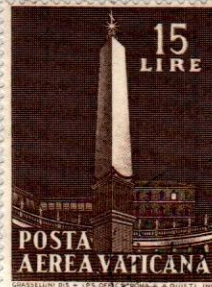
08
 Vincenzo PARISI
 International Airport
 NEW YORK - N.Y.



Via TWA Jet

AO

CITTA' DEL VATICANO
IV
-1.12.59-18
POSTA AEREA



VIA AEREA
PAR AVION

PER VIA AEREA
4 DICEMBRE 1959
VOLO INAUGURALE
ROMA - NEW YORK
INTERCONTINENTAL
JET BOEING 707 **TWA**

R CITTA' DEL VATICANO
9130

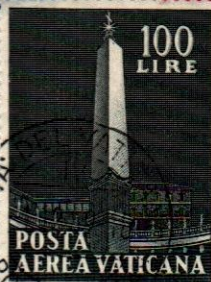
Mr. Enzo **PARISI**
Poste Restante
PARISI
Aviation

stampe raccomandate

Via TWA Jet

AO

CITTA' DEL VATICANO
IV
-1.12.59-18
POSTA AEREA



VIA AEREA
PAR AVION

4 DICEMBRE 1959
VOLO INAUGURALE
ROMA - NEW YORK
INTERCONTINENTAL
JET BOEING 707 **TWA**

R CITTA' DEL VATICANO
9057

64

Vincenzo **PARISI**
International Airport
NEW YORK - N.Y.

stampe raccomandate

Via TWA Jet



AO



VIA AEREA
PAR AVION

4 DICEMBRE 1959
VOLO INAUGURALE
ROMA - NEW YORK
INTERCONTINENTAL
JET BOEING 707 **TWA**

R CITTÀ DEL VATICANO
9073

37

~~Vincenzo PARISI
International Airport
NEW YORK - N.Y.~~

stampe raccomandate

Via ALITALIA
VOLO INAUGURALE
ROMA - MILANO
MONTREAL - NEW YORK



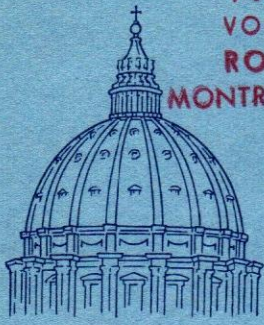
AÉROGRAMME
PAR AVION



VINCENZO PARISI
INTERNATIONAL AIRPORT

MONTREAL

retour →



Via ALITALIA
 VOLO INAUGURALE
 ROMA - MILANO
 MONTREAL - NEW YORK

1042

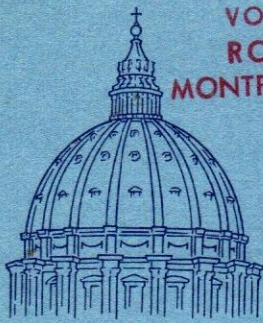


VINCENZO PARISI
 INTERNATIONAL AIRPORT

MONTREAL

AÉROGRAMME

PAR AVION



Via ALITALIA
 VOLO INAUGURALE
 ROMA - MILANO
 MONTREAL - NEW YORK



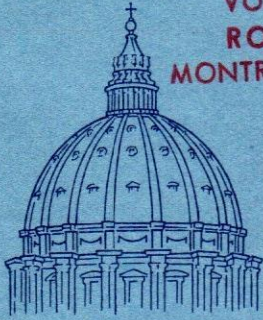
Vincenzo PARISI
 International Airport
 NEW YORK - N.Y.

AÉROGRAMME

PAR AVION

relevar →

Via ALITALIA
 VOLO INAUGURALE
 ROMA - MILANO
 MONTREAL - NEW YORK



Vincenzo PARISI
 International Airport
 NEW YORK - N.Y.

AÉROGRAMME
 PAR AVION



LUFTHANSA

bietet
 ein Erlebnis
 neuer Art:

BOEING
Jet INTERCONTINENTAL
 LH 420 A

Hamburg-Frankfurt-New York



HAMBURG - FRANKFURT - NEW YORK
 LH 420A am 17. 3. 1960

Vincenzo PARISI
 International Airport
 NEW YORK - N.Y.



LUFTHANSA

bietet
ein Erlebnis
neuer Art:

BOEING
Jet INTERCONTINENTAL

LH 420 A

Hamburg-Frankfurt-New York



PATTI LATERANENSI
1929 - 1959



30 POSTE
VATICANE 30

PATTI LATERANENSI
1929 - 1959



100 POSTE
VATICANE 100

HAMBURG - FRANKFURT - NEW YORK
LH 420A am 17. 3. 1960

Vincenzo PARISI
International Airport
NEW YORK - N.Y.



LUFTHANSA

bietet
ein Erlebnis
neuer Art:

BOEING
Jet INTERCONTINENTAL

LH 420 A

Hamburg-Frankfurt-New York



PATTI LATERANENSI
1929 - 1959



30 POSTE
VATICANE 30

PATTI LATERANENSI
1929 - 1959



100 POSTE
VATICANE 100

HAMBURG - FRANKFURT - NEW YORK
LH 420A am 17. 3. 1960

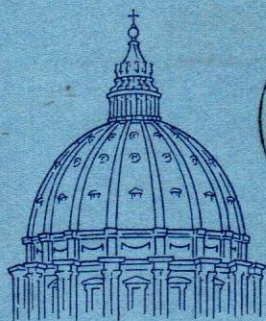
Vincenzo PARISI
International Airport
NEW YORK - N.Y.



VIA
DEUTSCHE
LUFTHANSA
JET
AÉROGRAMME

PAR AVION

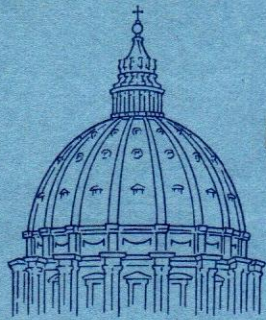
Vincenzo PARISI
International Airport
NEW YORK - N.Y.



VIA
DEUTSCHE
LUFTHANSA
JET
AÉROGRAMME

PAR AVION

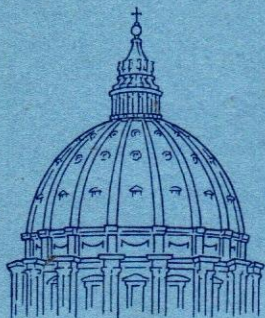
Vincenzo PARISI
International Airport
NEW YORK - N.Y.



VIA
DEUTSCHE
LUFTHANSA
JET
AÉROGRAMME

PAR AVION

CAPSO
International Airport
NEW YORK - N. Y.

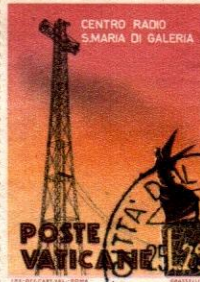


VIA
DEUTSCHE
LUFTHANSA
JET
AÉROGRAMME

PAR AVION

CAPSO
International Airport
NEW YORK - N. Y.

VIA
DEUTSCHE
LUFTHANSA
JET

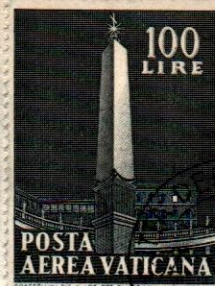


BY AIRMAIL
PAR AVION

VIA AEREA
PAR AVION
mit flug LH 420 am 1.4.60

Retour
CAPSO
International Airport
NEW YORK - N.Y.

VIA
DEUTSCHE
LUFTHANSA
JET



BY AIRMAIL
PAR AVION

VIA AEREA
PAR AVION
mit flug LH 420 am 1.4.60

Retour
Vincenzo PARISI
International Airport
NEW YORK - N.Y.



FRANKFURT - NEW YORK
LH 420 am 1. 4. 1960

VIA AEREA
PAR AVION

Retour

CAPSO
International Airport
NEW YORK - N.Y.



FRANKFURT - NEW YORK
LH 420 am 1. 4. 1960

VIA AEREA
PAR AVION

Retour

CAPSO
International Airport
NEW YORK - N.Y.

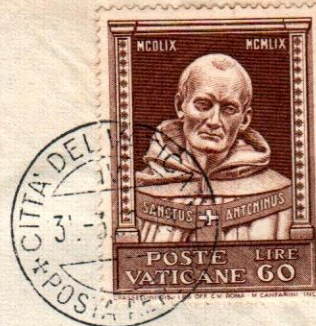


Terug afzender
Retour à l'expéditeur

BY AIRMAIL
PAR AVION

VINCENZO PARISI
POSTE RESTANTE

AMSTERDAM



Terug afzender
Retour à l'expéditeur

BY AIRMAIL
PAR AVION

VINCENZO PARISI
POSTE RESTANTE

AMSTERDAM





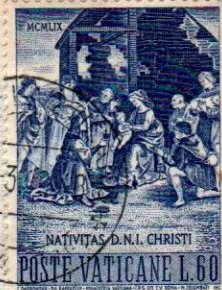




BY AIR MAIL
PAR AVION
VIA AEREA

CITTA DEL VATICANO
IV
31-3.60-18
POSTA AEREA

CITTA DEL VATICANO
IV
31-3.60-18
POSTA AEREA



VINCENZO PARISI
POSTE RESTANTE

WIEN



BY AIR MAIL
PAR AVION
VIA AEREA

CITTA DEL VATICANO
IV
31-3.60-18
POSTA AEREA

CITTA DEL VATICANO
IV
31-3.60-18
POSTA AEREA



VINCENZO PARISI
POSTE RESTANTE

WIEN



BY AIRMAIL
PAR AVION

VINCENZO PARISI
POSTE RESTANTE

VIENNA



BY AIRMAIL
PAR AVION

VINCENZO PARISI
POSTE RESTANTE

VIENNA



Via TWA Jet

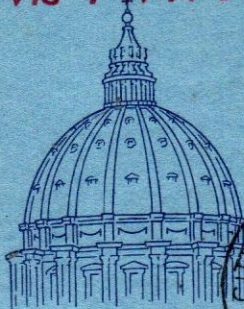
AÉROGRAMME

PAR AVION



Vincenzo PARISI
International Airport
NEW YORK - N.Y.

Via TWA Jet

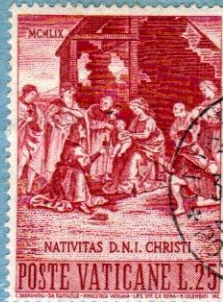
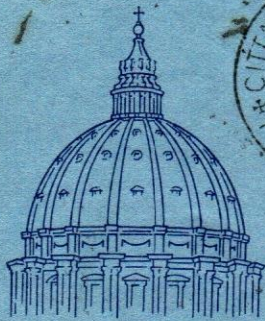


AÉROGRAMME

PAR AVION



Vincenzo PARISI
International Airport
NEW YORK - N.Y.

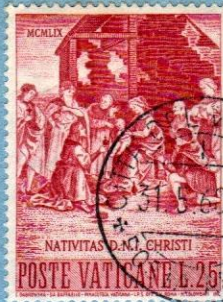
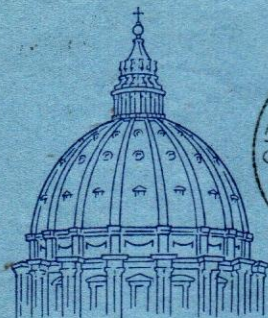


AÉROGRAMME

PAR AVION

Mr. MARIO DI STEFANO
Poste Restante

NEW-YORK - N.Y.



AÉROGRAMME

PAR AVION

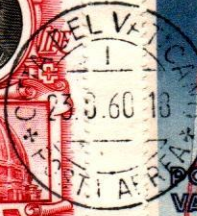
Mr. MARIO DI STEFANO
Poste Restante

NEW - YORK - N.Y.



**XVII. OLIMPIADE
ROMA 1960**

LUFTHANSA
ROMA - FRANKFURT - HAMBURG
25. 8. 1960 LH 331



Herrn
Hermann E. Sieger
FRANKFURT / MAIN - FLUGHAFEN
Poste restante

ALITALIA

DC - 8 Jet

PRIMO VOLO - FIRST FLIGHT
ROMA - JOHANNESBURG
8 - 11 - 1960

VIA
ATENE - NAIROBI - SALISBURY



NON RECLAMI
UNCLAIMED
ONAFGEHAAL

CARLO CERUTTI
Poste Restante
JOHANNESBURG
- Van Smuts.

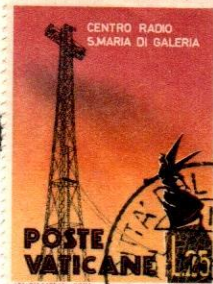
ALITALIA



DC - 8 Jet

PRIMO VOLO - FIRST FLIGHT
ROMA - JOHANNESBURG
8 - 11 - 1960

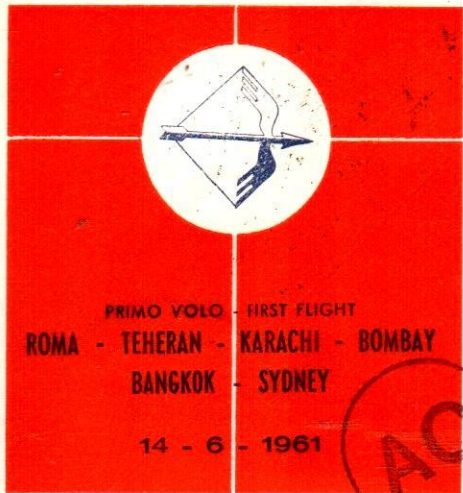
VIA
ATENE - NAIROBI - SALISBURY



POSTAL
CLAIMED
ONAFGEHAAL

CARLO CERUTTI
Poste Restante
JOHANNESBURG
A. VAN NOYEN
Jan Smuts.

ALITALIA



PRIMO VOLO - FIRST FLIGHT
ROMA - TEHERAN - KARACHI - BOMBAY
BANGKOK - SYDNEY

14 - 6 - 1961

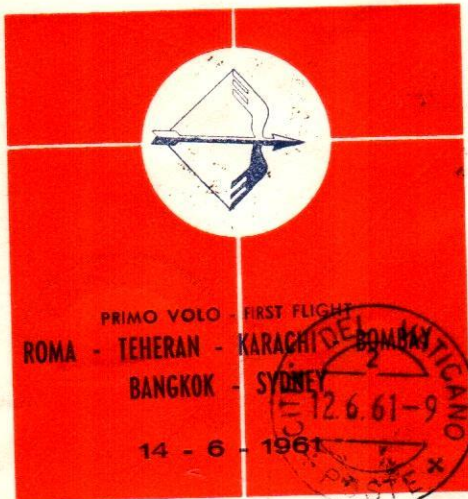
DC - 8 Jet

ST
RACI



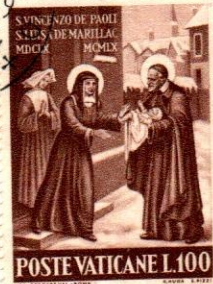
CARLO CERUTTI
Poste Restante
SYDNEY

6 **ALITALIA**



DC - 8 Jet

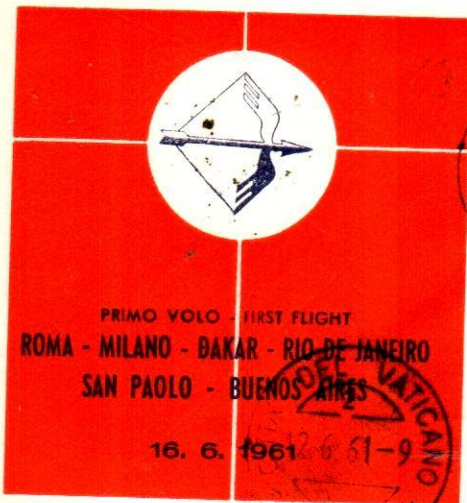
RA



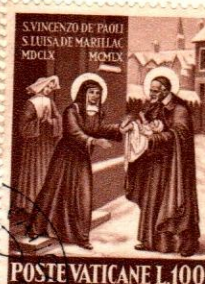
CARLO CERUTTI
Poste Restante
SYDNEY

ALITALIA

RAC



DC - 8 Jet

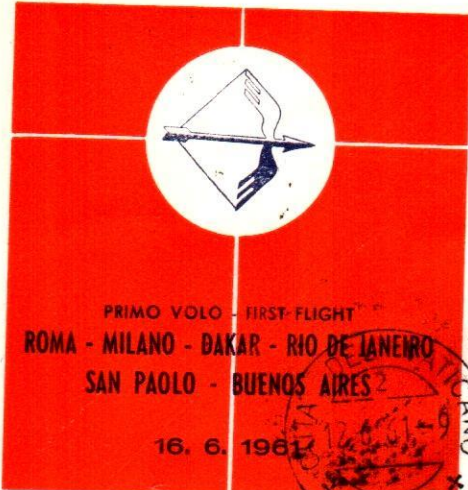


75



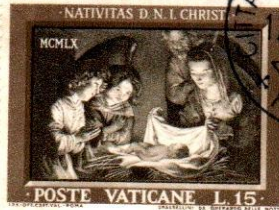
CARLO CERUTTI
Poste Restante
RIO DE JANEIRO

ALITALIA



DC - 8 Jet

STAMPE
RACCOMANDATA

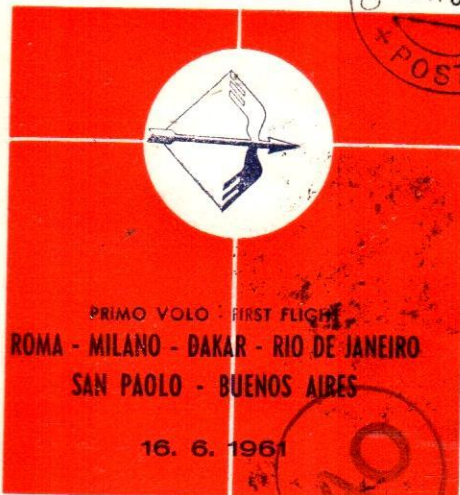


R CITTA DEL VATICANO
2599



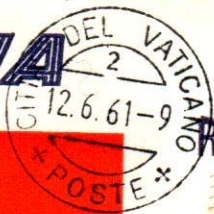
CARLO CERUTTI
Poste Restante
BUENOS AIRES

ALITALIA



DC - 8 Jet

STAMPE
RACCOMANDATA



R CITTA DEL VATICANO
2587

CARLO CERUTTI
Poste Restante
BUENOS AIRES

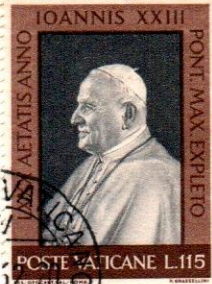


ALITALIA



DC - 8 jet

PRIMO VOLO - FIRST FLIGHT
ROMA - SYDNEY
4. 4. 1962



R CITTA DEL VATICANO
3472

VIA AEREA
58
STAMPE

FILATELIA VITTORIA
Posta Restante
SINGAPORE



ALITALIA



DC - 8 jet

PRIMO VOLO - FIRST FLIGHT
ROMA - SYDNEY
4. 4. 1962



R CITTA DEL VATICANO
3466

VIA AEREA
12
STAMPE

FILATELIA VITTORIA
Posta Restante
SINGAPORE



R CITTA DEL VATICANO
3514

VIA AEREA

FILATELIA VITTORIA
Posta Restante
CHIGAGO

STAMPE



R CITTA DEL VATICANO
3513 -

VIA AEREA

FILATELIA VITTORIA
Posta Restante
CHIGAGO

STAMPE



R CITTA DEL VATICANO
3504

VIA AEREA

FILATELIA VITTORIA
Posta Restante
CHIGAGO

STAMPE



R CITTA DEL VATICANO
3493

VIA AEREA

FILATELIA VITTORIA
Posta Restante
CHIGAGO

STAMPE



CITTA' DEL VATICANO
IV
-3-4.62-20
POSTA AEREA+



CITTA' DEL VATICANO
POSTA AEREA

CITTA' DEL VATICANO
POSTA AEREA

CITTA' DEL VATICANO
POSTA AEREA

VIA AEREA

R CITTA' DEL VATICANO
3496

NOT CALLED FOR
NON RECLAMÉ

C
V

FILATELIA VITTORIA
Posta Restante
MONTREAL

STAM



CITTA' DEL VATICANO
IV
-3-4.62-20
POSTA AEREA+



CITTA' DEL VATICANO
POSTA AEREA

CITTA' DEL VATICANO
POSTA AEREA

CITTA' DEL VATICANO
POSTA AEREA

VIA AEREA

R CITTA' DEL VATICANO
3495

NOT CALLED FOR
NON RECLAMÉ

CA

FILATELIA VITTORIA
Posta Restante
MONTREAL

STAM



R CITTA DEL VATICANO
3432

VIA AEREA

FILATELIA VITTORIA
Posta Restante
BANGCOK

STAMPE



R CITTA DEL VATICANO
3427

VIA AEREA

FILATELIA VITTORIA
Posta Restante
BANGCOK

STAMPE

30



11



RETOUR

R.L.O.
BM 8

BOMBAY

R CITTÀ DEL VATICANO
3417

Sig. FILATELIA VITTORIA
Via Posta Restante
BOMBAY

VIA AEREA



~~RETURNED TO SENDER
(Received from Letter branch)~~

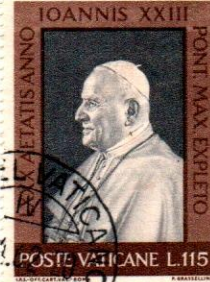
10

P.T.O.

R CITTÀ DEL VATICANO
3442

FILATELIA VITTORIA
Posta Restante
KARACHI

VIA AEREA



RETOUR



17

R.L.O. Bombay

CITTA DEL VATICANO
3419

Sig.
Via

FILATELLA VITTORIO
Posta Restante
BOMBAY



RETOUR



12

R.L.O. Bombay

CITTA DEL VATICANO
3418

Sig.
Via

FILATELLA VITTORIO
Posta Restante
BOMBAY

1952

18814



CITTA DEL VATICANO
4223

VIA AEREA

FILATELIA VITTORIA
Posta Restante
LECPOLDVILLE

STAMPE

18813



CITTA DEL VATICANO
4223

VIA AEREA

FILATELIA VITTORIA
Posta Restante
LECPOLDVILLE

STAMPE

18824



FILATELIA VITTORIA
Posta Restante
LEOPOLDVILLE

STAMPE

18806

RECLAME
NON



FILATELIA VITTORIA
Posta Restante
LEOPOLDVILLE

STAMPE

volo n.339 LUFTHANSA
MILANO = DUSSELDORF
24 GIUGNO 1965




Lufthansa
LH 339
Milano - Dusseldorf
24. 6. 1965
Primo collegamento aereo con scalo
con Europa Jet Boeing 727



R CITTA' DEL VATICANO
026395



H. BLUMENTHAL
4 DUSSELDORF/FLGH.
Postlagernd

volo n.339 LUFTHANSA
MILANO = DUSSELDORF
24 GIUGNO 1965




Lufthansa
LH 339
Milano - Dusseldorf
24. 6. 1965
Primo collegamento aereo con scalo
con Europa Jet Boeing 727



CITTA' DEL VATICANO
026397

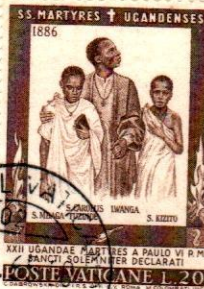


H. BLUMENTHAL
4 DUSSELDORF/FLGH.
Postlagernd

volo n. 339 LUFTHANSA
MILANO = DUSSELDORF
24 GIUGNO 1965




Lufthansa
LH 339
Milano - Düsseldorf
24. 6. 1965
Primo collegamento diretto senza scalo
con Europa Jet Boeing 727



H. BLUMENTHAL
4 DUSSELDORF/FLGH.
Postlagernd

volo n. 339 LUFTHANSA
MILANO = DUSSELDORF
24 GIUGNO 1965




Lufthansa
LH 339
Milano - Düsseldorf
24. 6. 1965
Primo collegamento diretto senza scalo
con Europa Jet Boeing 727



H. BLUMENTHAL
4 DUSSELDORF/FLGH.
Postlagernd

volo n.339 LUFTHANSA
MILANO = DUSSELDORF
24 GIUGNO 1965




Lufthansa
LH 339
Milano - Düsseldorf
24. 6. 1965
Primo collegamento diretto senza scalo
con Europa Jet Boeing 727
1



H. BLUMENTHAL
4 DUSSELDORF/FLGH.
Postlagernd

volo n.339 LUFTHANSA
MILANO = DUSSELDORF
24 GIUGNO 1965




Lufthansa
LH 339
Milano - Düsseldorf
24. 6. 1965
Primo collegamento diretto senza scalo
con Europa Jet Boeing 727
1



H. BLUMENTHAL
4 DUSSELDORF/FLGH.
Postlagernd

volo n.339 LUFTHANSA
MILANO = DUSSELDORF
24 GIUGNO 1965




Lufthansa
LH 339
Milano - Düsseldorf
24.6.1965
Primo collegamento diretto senza scalo
con Europa Jet Boeing 727



H. BLUMENTHAL
4 DUSSELDORF/FLGH.
Postlagernd

volo n.339 LUFTHANSA
MILANO = DUSSELDORF
24 GIUGNO 1965




Lufthansa
LH 339
Milano - Düsseldorf
24.6.1965
Primo collegamento diretto senza scalo
con Europa Jet Boeing 727



H. BLUMENTHAL
4 DUSSELDORF/FLGH.
Postlagernd

PAR AVION
Via Air France Jet
PARIS - TOKYO
POLAR ROUTE



PREMIERE LIAISON AIR FRANCE
par quadricycle BOEING 707
PARIS - ANCHORAGE - TOKYO
16 Février 1960



03918

Mr.
MASUO KITAGAWA
Poste Restante
TOKYO - Japon

PAR AVION
Via Air France Jet
PARIS - TOKYO
POLAR ROUTE



PREMIERE LIAISON AIR FRANCE
par quadricycle BOEING 707
PARIS - ANCHORAGE - TOKYO
16 Février 1960

Mr.
MASUO KITAGAWA
Poste Restante
TOKYO - Japon





PAR AVION

Via **ALITALIA**
VOLO INAUGURALE
ROMA - MILANO
MONTREAL - NEW YORK



Vincenzo PARISI
International Airport
NEW YORK - N.Y.

PAR AVION

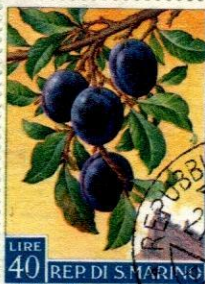
Via **ALITALIA**
VOLO INAUGURALE
ROMA - MILANO
MONTREAL - NEW YORK



Vincenzo PARISI
International Airport
NEW YORK - N.Y.

PAR AVION

Via **ALITALIA**
VOLO INAUGURALE
ROMA - MILANO
MONTREAL - NEW YORK



Vincenzo PARISI
International Airport
NEW YORK - N.Y.

retour

PAR AVION

VIA
DEUTSCHE
LUFTHANSA
JET



HAMBURG-FRANKFURT+NEW YORK
am 17.3.1960. LH 420A

Vincenzo PARISI
International Airport
NEW YORK - N.Y.

PAR AVION

VIA
DEUTSCHE
LUFTHANSA
JET



HAMBURG-FRANKFURT-NEW YORK
am 17.3.1960. LH 420A

CAPSO
International Airport
NEW YORK - N.Y.

VIA
DEUTSCHE
LUFTHANSA
JET



BY AIRMAIL
PAR AVION

mit flug LH 420 am 1.4.60

CAPSO
International Airport
NEW YORK - N.Y.

VIA
DEUTSCHE
LUFTHANSA
JET



BY AIRMAIL
PAR AVION

mit flug LH 420 am 1.4.60

Vincenzo PARISI
International Airport
NEW YORK - N.Y.



FRANKFURT - NEW YORK
LH 420 am 1.4.1960

CAPSO
International Airport
NEW YORK - N.Y.



TÄGLICH NON-STOP
FRANKFURT-NEW YORK
 LH 420
LUFTHANSA



FRANKFURT - NEW YORK
 LH 420 am 1. 4. 1960

CAPSO
 International Airport
 NEW YORK - N. Y.



PRAHA 120
 5.IV.60-10

REPUBBLICA DI SAN MARINO
 POSTA
 29-3-1960
 AEREA
 CITTÀ



BY AIRMAIL
 PAR AVION

VINCENZO PARISI
 POSTE RESTANTE

PRAGA



PRAHA 120
-5.IV.60-18



REPUBBLICA DI SAN MARINO
POSTA
29.-3.1960
AEREA
CITTA'

BY AIRMAIL
PAR AVION

VINCENZO PARISI
POSTE RESTANTE

PRAGA



BY AIRMAIL
PAR AVION



REPUBBLICA DI SAN MARINO
POSTA
29.-3.1960
AEREA
CITTA'

VINCENZO PARISI
POSTE RESTANTE

VIENNA



BY AIRMAIL
PAR AVION

VINCENZO PARISI
POSTE RESTANTE
VIENNA



BY AIR MAIL
PAR AVION
VIA AEREA

VINCENZO PARISI
POSTE RESTANTE
WIEN



Terug afzender
Retour à l'expéditeur

BY AIRMAIL
PAR AVION

REPUBBLICA DI SAN MARINO
POSTA
29.-3.1960
AEREA
CITTÀ DI SAN MARINO



VINCENZO PARISI
POSTE RESTANTE
AMSTERDAM



Terug afzender
Retour à l'expéditeur

BY AIRMAIL
PAR AVION

REPUBBLICA DI SAN MARINO
POSTA
29.-3.1960
AEREA
CITTÀ DI SAN MARINO



VINCENZO PARISI
POSTE RESTANTE
AMSTERDAM



*Terug arzender
Retour à l'expediteur*

BY AIRMAIL
PAR AVION

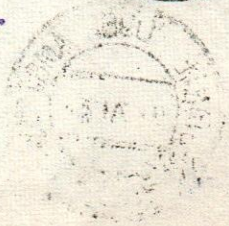


VINCENZO PARISI
POSTE RESTANTE
AMSTERDAM



*Terug arzender
Retour à l'expediteur*

BY AIRMAIL
PAR AVION



VINCENZO PARISI
POSTE RESTANTE
AMSTERDAM

PAR AVION



Mr.
MARIO DI STEFANO
Poste Restante
NEW-YORK - N.Y.

PAR AVION



Mr.
MARIO DI STEFANO
Poste Restante
NEW-YORK - N.Y.

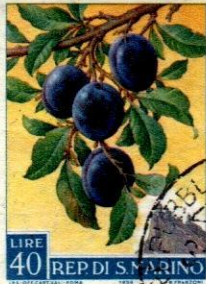
A LEIVOEUR

PAR AVION

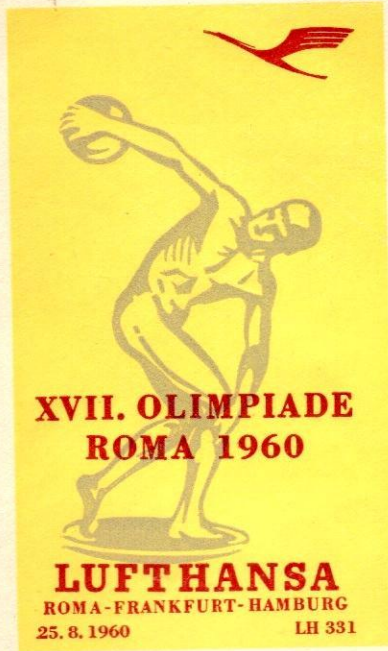


Mr.
MARIO DI STEFANO
Poste Restante
NEW-YORK - N.Y.

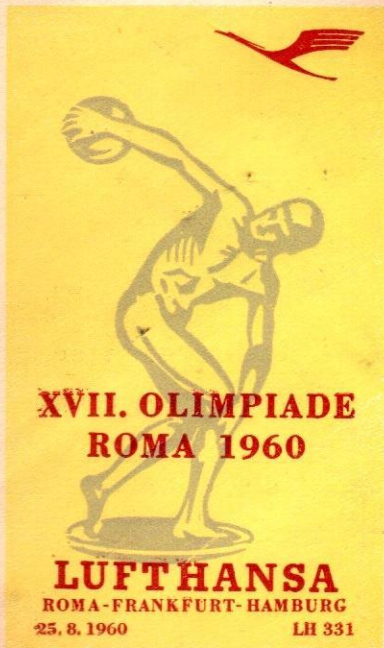
PAR AVION



Mr.
MARIO DI STEFANO
Poste Restante
NEW-YORK - N.Y.



Herrn
Wolfgang Winkel
Poste restante
HAMBURG-Flughafen
Germania



Herrn
Wolfgang Winkel
Poste restante
HAMBURG-Flughafen
Germania

ALITALIA



DC - 8 Jet

PRIMO VOLO - FIRST FLIGHT
ROMA - JOHANNESBURG
8 - 11 - 1960

VIA
ATENE - NAIROBI - SALISBURY



NON RECLAME
UNCLAIMED
ONAFGEHAAL



CARLO GERUTTI
Poste Restante
JOHANNESBURG
- Jan Smuts.

ALITALIA



DC - 8 Jet

PRIMO VOLO - FIRST FLIGHT
ROMA - JOHANNESBURG
8 - 11 - 1960

VIA
ATENE - NAIROBI - SALISBURY



NON RECLAME
UNCLAIMED
ONAFGEHAAL



CARLO GERUTTI
Poste Restante
JOHANNESBURG
- Jan Smuts.

ALITALIA



DC - 8 Jet

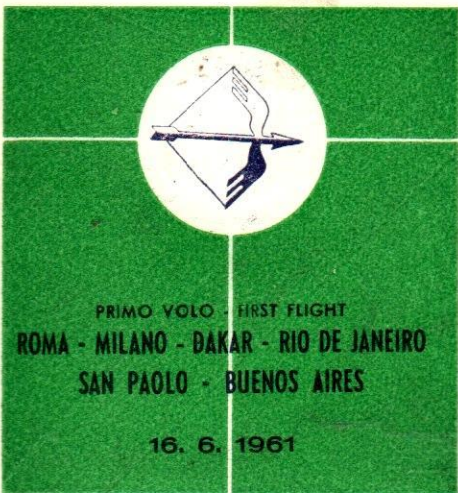
STAMPE
RACCOMANDATA



04458

CARLO CERUTTI
Poste Restante
BUENOS AIRES

ALITALIA



DC - 8 Jet

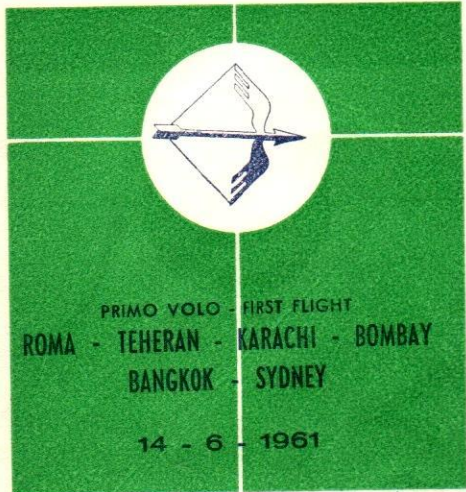


STAMPE
RACCOMANDATA

04485

CARLO CERUTTI
Poste Restante
RIO DE JANEIRO

ALITALIA



DC - 8 Jet

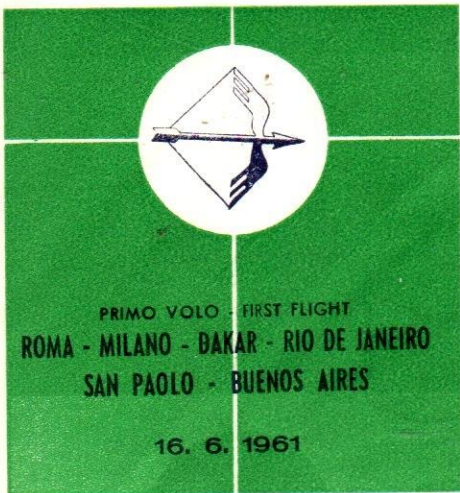
STAMPE
RACCOMANDATA



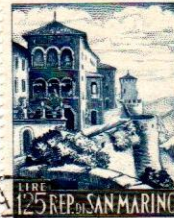
CARLO CERUTTI
Poste Restante
S Y D N E Y

04437

ALITALIA



DC - 8 Jet

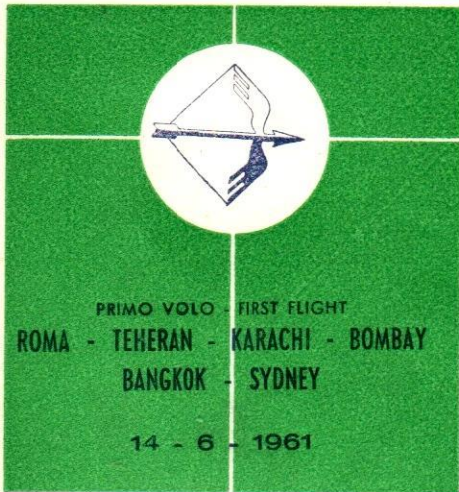


STAMPE
RACCOMANDATA

CARLO CERUTTI
Poste Restante
RIO DE JANEIRO

04468

ALITALIA



DC - 8 Jet

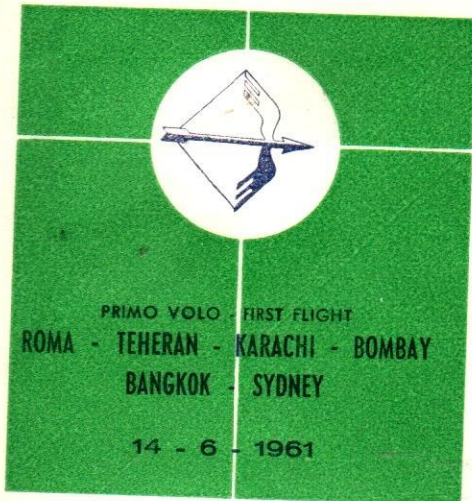
STAMPE
RACCOMANDATA



CARLO CERUTTI
Poste Restante
SYDNEY

04438

ALITALIA



DC - 8 Jet

STAMPE
RACCOMANDATA



CARLO CERUTTI
Poste Restante
SYDNEY

04432

22

ALITALIA



DC-8 jet

PRIMO VOLO - FIRST FLIGHT
ROMA - SYDNEY
4. 4. 1962



08226

VIA AEREA

FILATELIA VITTORIA
Posta Restante
SINGAPORE

STAMPE

10

ALITALIA



DC-8 jet

PRIMO VOLO - FIRST FLIGHT
ROMA - SYDNEY
4. 4. 1962



08227

VIA AEREA

FILATELIA VITTORIA
Posta Restante
SINGAPORE

STAMPE

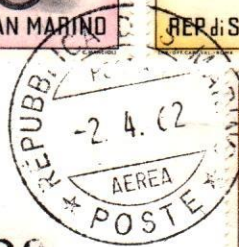
19

ALITALIA



DC-8 jet

PRIMO VOLO - FIRST FLIGHT
ROMA - SYDNEY
4. 4. 1962



08220

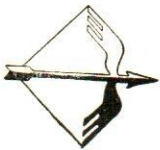
VIA AEREA

FILATELIA VITTORIA
Posta Restante
SINGAPORE

STAMPE

14

ALITALIA



DC-8 jet

PRIMO VOLO - FIRST FLIGHT
ROMA - SYDNEY
4. 4. 1962



08211

VIA AEREA

FILATELIA VITTORIA
Posta Restante
SINGAPORE

STAMPE

18
ALITALIA



DC-8 jet

PRIMO VOLO - FIRST FLIGHT
ROMA - SYDNEY
4. 4. 1962



08258



VIA AEREA

FILATELIA VITTORIA
Posta Restante
SINGAPORE

STAMPE

ALITALIA



PRIMO VOLO - FIRST FLIGHT
ROMA - CHICAGO
5. 4. 1962

DC-8 jet



08161



FILATELIA VITTORIA
Posta Restante
CHICAGO

STAMPE

ALITALIA



PRIMO VOLO - FIRST FLIGHT
ROMA - CHICAGO
5. 4. 1962

DC - 8 jet



08167

FILATELIA VITTORIA
Posta Restante
CHIGAGO

VIA AEREA

STAMPE

ALITALIA



PRIMO VOLO - FIRST FLIGHT
ROMA - CHICAGO
5. 4. 1962

DC - 8 jet



08151

FILATELIA VITTORIA
Posta Restante
CHIGAGO

VIA AEREA

STAMPE

ALITALIA



PRIMO VOLO - FIRST FLIGHT
ROMA - CHICAGO
5. 4. 1962

DC - 8 jet



08153

VIA AEREA

FILATELIA VITTORIA
Posta Restante
CHIGAGO

STAMPE

ALITALIA



PRIMO VOLO - FIRST FLIGHT
ROMA - CHICAGO
5. 4. 1962

DC - 8 jet



08175

VIA AEREA

FILATELIA VITTORIA
Posta Restante
CHIGAGO

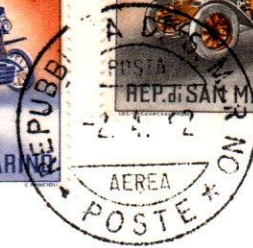
STAMPE

ALITALIA



PRIMO VOLO - FIRST FLIGHT
ROMA - CHICAGO
5. 4. 1962

DC - 8 jet



08178

FILATELIA VITTORIA
Posta Restante
CHIGAGO

VIA AEREA
STAMPE

18828

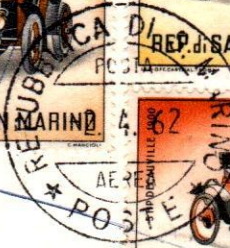


08253

FILATELIA VITTORIA
Posta Restante
LEOPOLDVILLE

VIA AEREA
STAMPE

18829



08254

FILATELIA VITTORIA
Posta Restante
LECPOLDVILLE

VIA AEREA

STAMPE

ALITALIA



PRIMO VOLO - FIRST FLIGHT
ROMA - CHICAGO
5. 4. 1962

DC - 8 Jet



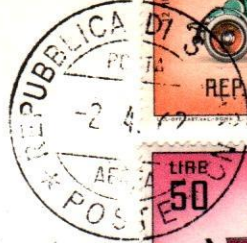
08193

FILATELIA VITTORIA
Fermo Posta
MILANO

VIA AEREA
STAMPE



ALTERNATIVE



08187

VIA AEREA

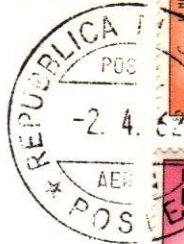
NOT CALLED FOR
NON RÉCLAMÉ

FILATELIA VITTORIA
Posta Restante
MONTREAL

STAMPE



ALTERNATIVE



08188

VIA AEREA

NOT CALLED FOR
NON RÉCLAMÉ

FILATELIA VITTORIA
Posta Restante
MONTREAL

STAMPE



VIA AEREA

08181

NOT CALLED FOR
NON RÉCLAMÉ

FILATELIA VITTORIA
Posta Restante
MONTREAL

STAMPE



RETOUR

08131

*R. L. -
Bombay*



FILATELIA VITTORIA
Posta Restante
BOMBAY

VIA AEREA

STAMPE



RETOUR



*R.k. →
Bombay*

08133

VIA AEREA

FILATELIA VITTORIA
Posta Restante
BOMBAY

STAMPE



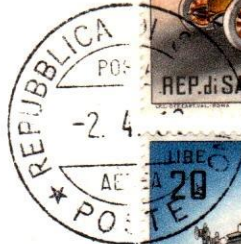
R

08140

VIA AEREA

FILATELIA VITTORIA
Posta Restante
BANGCOK

STAMPE



R

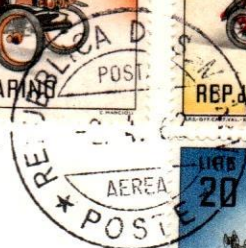
08145

VIA AEREA

FILATELIA VITTORIA
Posta Restante
BANGCOK

STAMPE

~~LA MONTAGNE~~



RETOUR
NON. RECLAMÉ

08123

VIA AEREA

FILATELIA VITTORIA
Posta Restante
TEHRAN

STAMPE

47

REPUBBLICA



08126

VIA AEREA

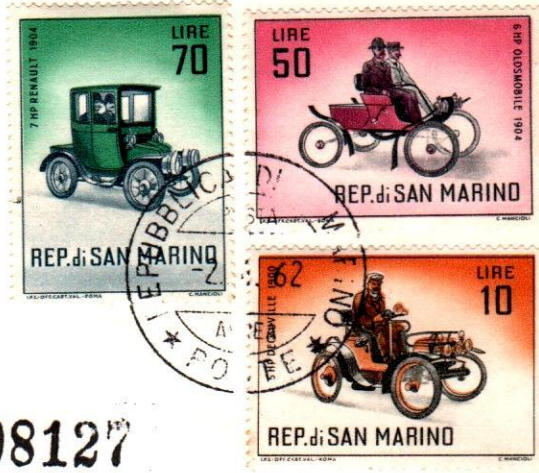
FILATELIA VITTORIA
Posta Restante
TERRACINA

STAMPE

RETOUR
NON. RECLAMÉ

84

REPUBBLICA



08127

VIA AEREA

FILATELIA VITTORIA
Posta Restante
TERRACINA

STAMPE

RETOUR
NON. RECLAMÉ

83

RETURNED TO SENDER
(Received from this country)
In Letter branch.

*Al As H.
As. hays*

15

P. 70



08116

FILATELIA VITTORIA
Posta Restante
KARACHI

STAMPE
VIA AEREA

RETURNED TO SENDER
(Received from this country)
In Letter branch.

W

P. 50



81180

FILATELIA VITTORIA
Posta Restante
KARACHI

STAMPE
VIA AEREA

**PER VIA AEREA
PAR AVION**
Mod. 24-R



Lufthansa
LH 339
Milano - Düsseldorf
24.6.1965
Primo collegamento diretto senza scalo
con Europa Jet Boeing 727



EuropaJet
Lufthansa

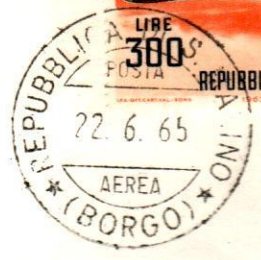
S. MARINO BORGO
R N° 1659

H. BLÜMENTHAL
4 DÜSSELDORF / FLGH.
Postlagernd

**PER VIA AEREA
PAR AVION**
Mod. 24-R



Lufthansa
LH 339
Milano - Düsseldorf
24.6.1965
Primo collegamento diretto senza scalo
con Europa Jet Boeing 727



EuropaJet
Lufthansa

S. MARINO BORGO
R N° 1661

H. BLÜMENTHAL
4 DÜSSELDORF / FLGH.
Postlagernd

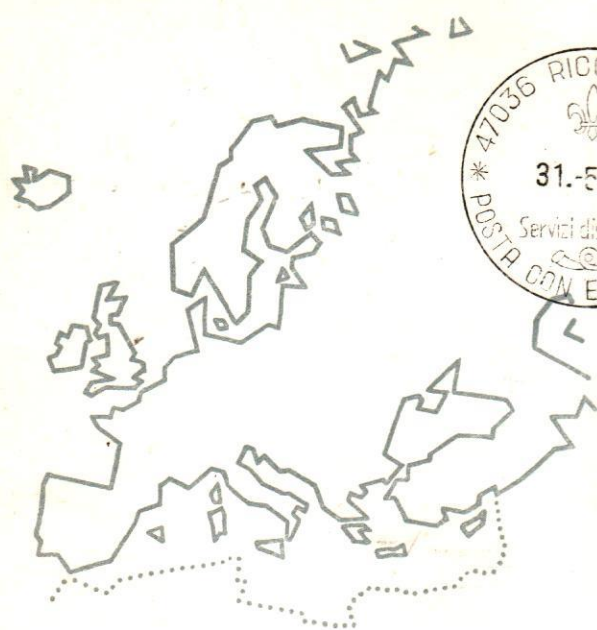


47036 RICCIONE (FO)
31-5-69
Servizi distaccati
POSTA CON ELICOTTERO

REP. DI SAN MARINO
POSTA-AEREA
31-5-69
MOSTRA FILATELICA RICCIONE



FILATELIA VITTORIA
Piazza Cordusio, 2
(ITALY) MILANO



47036 RICCIONE (FO)
31-5-69
Servizi distaccati
POSTA CON ELICOTTERO

REP. DI SAN MARINO
POSTA-AEREA
31-5-69
MOSTRA FILATELICA RICCIONE



FILATELIA VITTORIA
Piazza Cordusio, 2
(ITALY) MILANO